

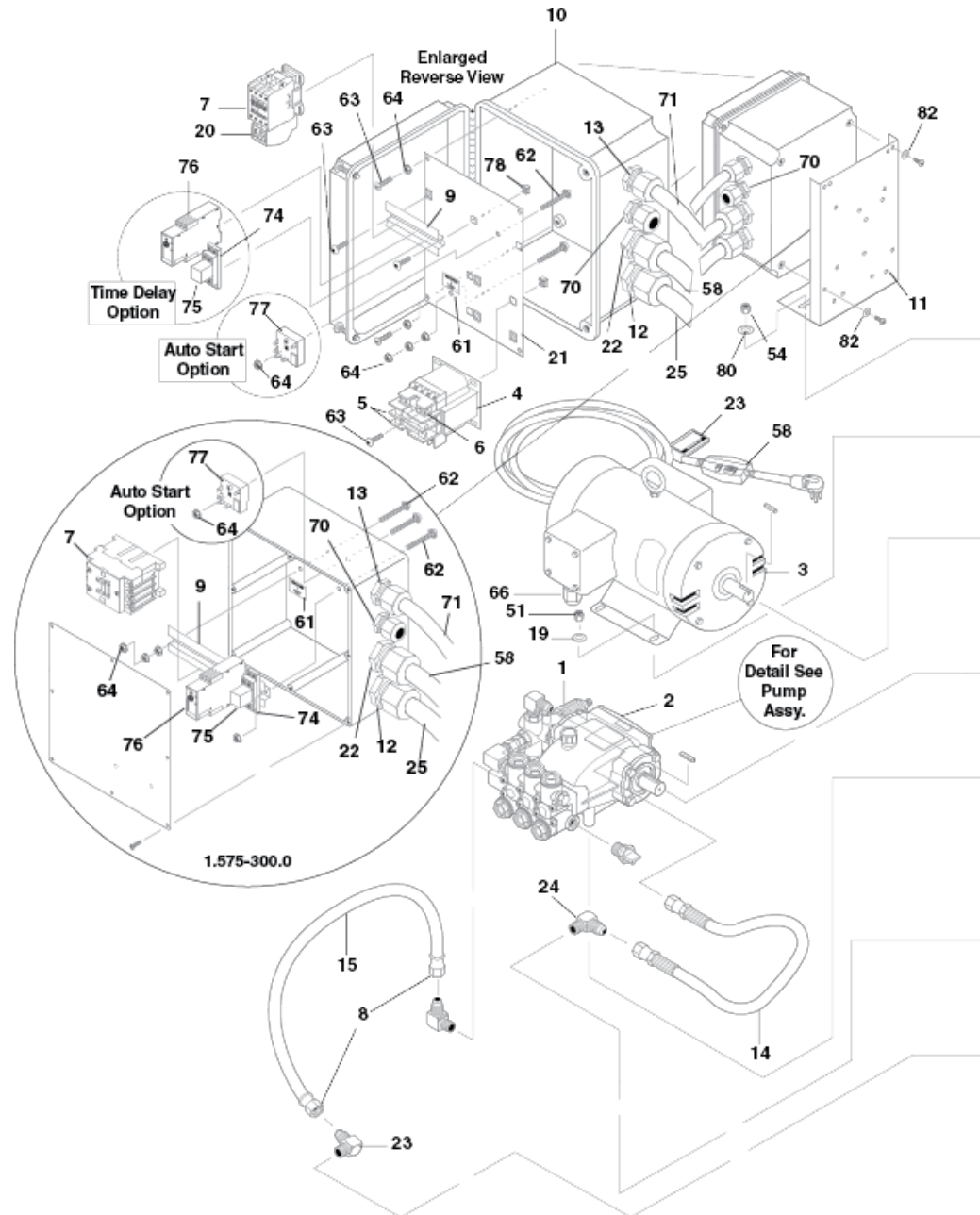
Spare parts list

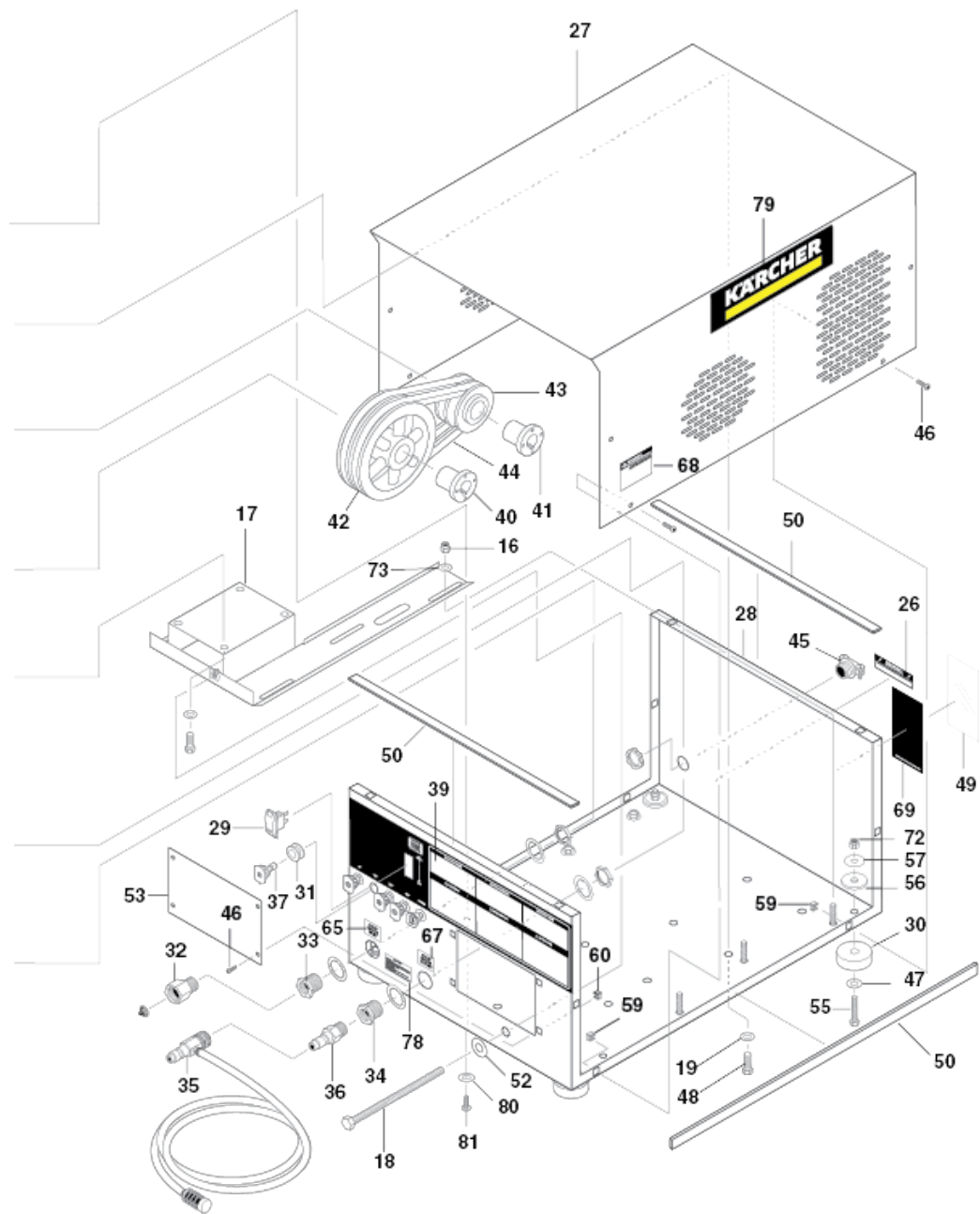
(1.575-307.0) HD 3.5/ 30 ST Eb B

Table of contents

HD 3.5/ 30 ST Eb B (1.575-307.0)	3
50 Kärcher HD (0.250-996.0)	4
60 HOSE AND SPRAY GUN (0.251-007.0)	10
3 EASY Force Advanced KNA (4.775-054.0)	12
9000 Spare part set lever (2.885-483.0)	14
70 MULTI-ROOM INSTALLATION (0.251-008.0)	16
80 PUMP (0.251-009.0)	18
90 VB8 UNLOADER VALVE (0.251-011.0)	20
100 B SERIES PUMP (0.250-970.0)	23
110 KM.3 SERIES PUMP (0.251-012.0)	26
120 VRT3 UNLOADER (0.250-972.0)	29

POS	Article no.	Description	Quantity	Unit
20		WIRING, 3PH	1.000	ST
30		WIRING, 3PH, W/AUTO START/STOP	1.000	ST
50	0.250-996.0	Kärcher HD	1.000	ST
60	0.251-007.0	HOSE AND SPRAY GUN	1.000	ST
70	0.251-008.0	MULTI-ROOM INSTALLATION	1.000	ST
80	0.251-009.0	PUMP	1.000	ST
90	0.251-011.0	VB8 UNLOADER VALVE	1.000	ST
100	0.250-970.0	B SERIES PUMP	1.000	ST
110	0.251-012.0	KM.3 SERIES PUMP	1.000	ST
120	0.250-972.0	VRT3 UNLOADER	1.000	ST





50 Kärcher HD (0.250-996.0)

POS	Article no.	Description	Quantity	Unit	Remark
1	9.802-362.0	UNLOADER, PA 8@3650, VB8 W/SWITCH (N/C)	1.000	ST	8.750-297.0,8.750-298.0,8.750-299.0
2	9.804-006.0	PUMP, KARCHER KD3030R.1, 3@3000,1650 RPM	1.000	ST	8.751-189.0
3	8.754-710.0	MOTOR, 2HP 1PH 115/230V 3470 RPM ODP	1.000	ST	8.715-097.0,8.755-604.0,8.755-606.0
3	8.754-710.0	MOTOR, 2HP 1PH 115/230V 3470 RPM ODP	1.000	ST	9.802-330.0,9.802-332.0,9.802-336.0,9.802-337.0,8.751-004.0
4	9.804-556.0	TRANSFORMER, 208/277V-120V,.050KVA	1.000	ST	(304.0, 305.0, 309.0, 310.0)
4	9.802-551.0	TRANSFRMER,240/480V-120V,50/60HZ,.050KVA	1.000	ST	(301.0, 302.0, 303.0, 306.0,307.0, 308.0)
5	9.802-462.0	FUSE, KTK-R-1/2 600V MIDGET FUSE	2.000	ST	(303.0, 308.0)
5	8.933-007.0	FUSE, KTK-R1 600V MIDGET FUSE	2.000	ST	(306.0, 307.0, 310.0, 301.0,302.0, 304.0, 305.0 309.0)
6	9.802-463.0	FUSE, PAPER, BUSS FNM-1/2,250V MIDGET TD	1.000	ST	(309.0)
7	8.724-268.0	CONTACTOR, DP C25DNY152AL, 25 AMP	1.000	ST	8.724-276.0
8	9.802-151.0	SWIVEL, 1/2" BARB x 1/2"JIC, FEM/BRASS	2.000	ST	
9	9.802-457.0	DIN RAIL,35MM	4.000	IN	
10	9.802-476.0	BOX,PLASTIC, 10X8X6 W/LID A-1086CHSCFG	1.000	ST	301.0,302.0,303.0,304.0,305.0,306.0,307.0,308.0,309.0,310.0
10	9.802-475.0	BOX, PLASTIC 8X8X4, P/N 884PJ-PVC	1.000	ST	300.0
11	9.803-038.0	BRACKET, SUPPORT FOR ELECT BOX #6-03907	1.000	ST	
12	9.802-524.0	*LOCKNUT, 1/2" CONDUIT	1.000	ST	
12	9.802-515.0	STRAIN RELIEF,STRT,LQ TITE 3200,(876029)	1.000	ST	300.0
12	9.802-518.0	STRAIN RELIEF, LT, STR, 3/4 NPT .49-.71D	1.000	ST	301.0,302.0,303.0,304.0,305.0,306.0,307.0,308.0,309.0,310.0
13	9.802-524.0	*LOCKNUT, 1/2" CONDUIT	1.000	ST	
13	9.802-515.0	STRAIN RELIEF,STRT,LQ TITE 3200,(876029)	1.000	ST	
14	8.918-424.0	HOSE,3/8"X 25",2 WIRE, PRESSURE LO	1.000	ST	
15	9.802-259.0	HOSE, 1/2" PUSH-ON, /FT	1.000	ST	
16	9.802-776.0	NUT, 5/16-18, ESNA	4.000	ST	
17	9.803-100.0	SLIDER ASSY, CW CABINET, WRINKLE BLACK	1.000	ST	
18	9.802-738.0	BOLT, 1/2 X 8", NC, HH, TAP, ALL THREAD	1.000	ST	
19	9.802-807.0	WASHER, 3/8", SAE, FLAT ZINC	4.000	ST	301.0,302.0,303.0,304.0,305.0,306.0,307.0,308.0,309.0,310.0
19	8.718-980.0	WASHER, 5/16" FLAT, SAE (780452)	4.000	ST	300.0
20	8.754-710.0	MOTOR, 2HP 1PH 115/230V 3470 RPM ODP	1.000	ST	
21	9.803-032.0	STANDOFF, ELECTRICAL BOX	1.000	ST	
22	8.753-364.0	Strain relief LT 1" NPT Black	1.000	ST	306.0, 309.0

50 Kärcher HD (0.250-996.0)

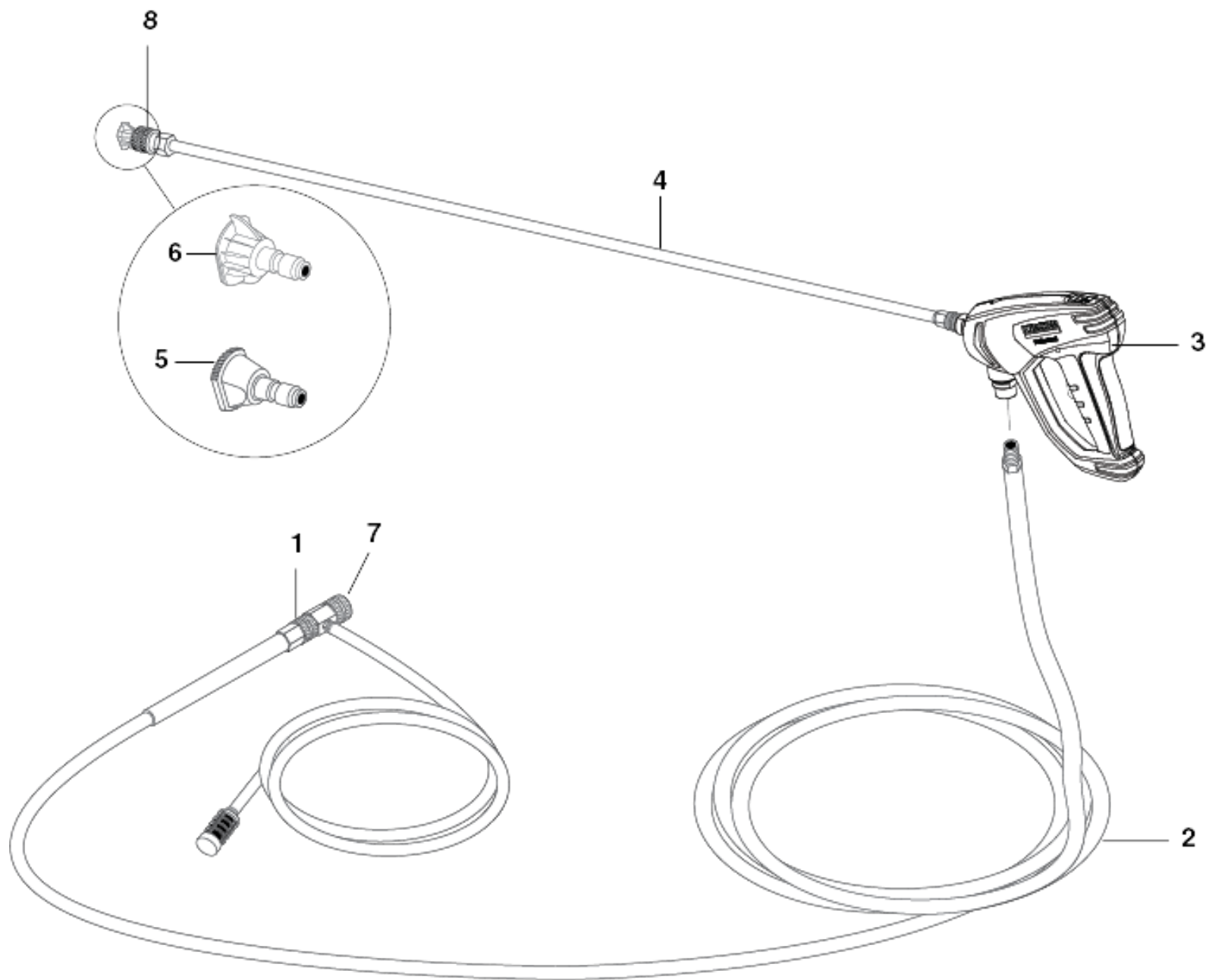
POS	Article no.	Description	Quantity	Unit	Remark
22	9.802-518.0	STRAIN RELIEF, LT, STR, 3/4 NPT .49-.71D	1.000	ST	301.0,302.0,303.0,304.0,305.0,306.0,307.0,308.0,309.0,310.0
22	8.753-363.0	LOCKNUT, 1" NPT, BLACK, NYLON	1.000	ST	NOT SHOWN 306.0,309.0
23	8.932-969.0	LABEL, WARNING, SERVICE CORD	1.000	ST	
24	9.802-039.0	Elbow 1/2" JIC x 3/8" MPT STEEL	1.000	ST	
25	9.802-437.0	CORD, SERV, 10/4, SEOOW, /FT	40.000	FT	310.0
25	9.802-436.0	CORD, SERV, 10/3, SEOOW, /FT	40.000	FT	301.0, 304.0
25	9.802-425.0	CORD, SERV, 8/3, SEOOW, /FT	40.000	FT	306.0, 309.0
25	9.802-429.0	CORD, SERV, 12/4, SEOOW, /FT	40.000	FT	302.0,303.0,305.0,306.0,307.0,308.0
25	9.802-428.0	CORD, SERV, 12/3, SJEOOW, /FT	40.000	FT	300.0
26	9.800-016.0	LABEL, DISCONNECT POWER SUPPLY	1.000	ST	
27	9.802-879.0	COVER, CABINET COLD WATER, WRINKLE BLACK	1.000	ST	
28	9.802-875.0	BASE, CABINET COLD WATER, WRINKLE BLACK	1.000	ST	
29	9.802-452.0	SWTCH,RCKR,CARLING M-CIRCUIT,RED ACTUATR	1.000	ST	TIMER-DELAY SHUTDOWN OPTION
29	9.802-451.0	SWITCH, ROCKER, CARLING GREEN LENS875858	1.000	ST	
30	9.802-066.0	Pad Soft Rubber	4.000	ST	
31	9.802-064.0	GROMMET, RUBBER, NOZZLE HOLDER	5.000	ST	
32	9.802-146.0	SWIVEL, 1/2" MP x 3/4" GHF W/STRAINER	1.000	ST	
33	8.707-000.0	CONNECTOR, 1/2" ANCHOR	1.000	ST	
34	8.755-033.0	BULKHEAD,3/8"FXF NPT X1-14UNS M,ST,6KPSI	1.000	ST	
35	9.802-225.0	Injector	1.000	ST	
36	9.802-171.0	COUPLER, 3/8" PLUG, MALE, STEEL/ZINC	1.000	ST	
37	8.712-359.0	NOZZLE, SAQCMEG 2505.5, GREEN	1.000	ST	300.0
37	8.712-360.0	Nozzle SAQCMEG 4005.5, WHITE	1.000	ST	300.0
37	8.712-363.0	NOZZLE, SAQCMEG 2506, GREEN	1.000	ST	301.0,302.0,303.0,304.0,305.0
37	8.712-364.0	NOZZLE, SAQCMEG 4006, WHITE	1.000	ST	301.0,302.0,303.0,304.0,305.0
37	8.712-362.0	NOZZLE, SAQCMEG 1506, YELLOW	1.000	ST	301.0,302.0,303.0,304.0,305.0
37	8.712-361.0	NOZZLE, SAQCMEG 0006, RED	1.000	ST	301.0,302.0,303.0,304.0,305.0
37	8.712-346.0	NOZZLE, SAQCMEG 1504, YELLOW	1.000	ST	306.0,307.0,308.0,309.0,310.0
37	8.712-345.0	NOZZLE, SAQCMEG 0004, RED	1.000	ST	306.0,307.0,308.0,309.0,310.0
37	8.712-347.0	NOZZLE, SAQCMEG 2504, GREEN	1.000	ST	306.0,307.0,308.0,309.0,310.0
37	8.712-348.0	NOZZLE, SAQCMEG 4004, WHITE	1.000	ST	306.0,307.0,308.0,309.0,310.0
37	8.712-357.0	NOZZLE, SAQCMEG 0005.5, RED	1.000	ST	300.0

50 Kärcher HD (0.250-996.0)

POS	Article no.	Description	Quantity	Unit	Remark
37	8.712-358.0	NOZZLE, SAQCMEG 1505.5, YELLOW	1.000	ST	300.0
38	9.802-791.0	"*NUT, CAGE, 10/32"" X 16 GA"	6.000	ST	301.0,302.0,303.0,304.0,305.0,306.0,307.0,308.0,309.0,310.0
39	9.800-064.0	LABEL, KARCHER, CONTROL PANEL, CT	1.000	ST	
40	9.802-402.0	BUSHING, H X 24MM	1.000	ST	
41	9.802-402.0	BUSHING, H X 24MM	1.000	ST	
42	9.804-006.0	PUMP, KARCHER KD3030R.1, 3@3000,1650 RPM	1.000	ST	8.751-189.0
43	9.802-369.0	PULLEY, AK74H	1.000	ST	8.715.592.0
44	9.804-005.0	BELT, AX40	1.000	ST	9.802-411.0, 9.802-420.0
45	9.802-522.0	STRAIN RELIEF, 1"	1.000	ST	
46	9.802-765.0	SCREW, 1/4-20 X 1/2", BH BLACK	12.000	ST	
47	9.802-817.0	Washer 3/8" x 1"	4.000	ST	
48	9.802-720.0	BOLT, 3/8" x 1", NC HH	4.000	ST	301.0,302.0,303.0,304.0,305.0,306.0,307.0,308.0,309.0,310.0
48	9.802-710.0	Screw 5/16" x 1" NC	4.000	ST	300.0
49	9.800-034.0	Label clear lexan 4.30" x 4.70"	1.000	ST	
50	9.802-073.0	WEATHERSTRIP, 1/8" x 1/2" x 75'	7.000	FT	
51	9.802-779.0	NUT, 3/8", ESNA, NC	4.000	ST	301.0,302.0,303.0,304.0,305.0,306.0,307.0,308.0,309.0,310.0
51	9.802-776.0	NUT, 5/16-18, ESNA	4.000	ST	300.0
52	9.802-800.0	WASHER, 1/2", FLAT(780455)	1.000	ST	
53	9.803-081.0	COVER, ACCESS HOLE, CABINET COLD WATER	1.000	ST	
54	9.802-773.0	Nut 1/4-20 ESNA NC	2.000	ST	
55	9.802-723.0	BOLT, 3/8" x 1-1/2", NC HHNC HH	4.000	ST	
56	9.802-067.0	BUMPER PAD, ENGINE	4.000	ST	
57	9.802-811.0	WASHER, 3/8" x 1-1/2", FENDER, SAE	4.000	ST	
58	9.802-431.0	GFCI, 125V 20A, 36' 12-3 CORD (981000)	1.000	ST	300.0
58	9.802-437.0	CORD, SERV, 10/4, SEOOW, /FT	10.000	FT	310.0
58	9.802-434.0	GFCI, 240V 1PH 40A, 36' 8-3 CORD	1.000	ST	306.0, 309.0
58	9.802-430.0	GFCI, 240V 1PH 30A, 36' 10-3 CORD	1.000	ST	301.0, 304.0
58	9.802-429.0	CORD, SERV, 12/4, SEOOW, /FT	10.000	FT	302.0,303.0,305.0,306.0,308.0
59	9.802-794.0	NUT, CAGE, 1/4" X 12 GA	8.000	ST	
60	9.802-074.0	NUT, 1/4" SQUARE HEAD GROMMET, NYLON	4.000	ST	
61	9.800-040.0	LABEL, GROUND SYMBOL	1.000	ST	

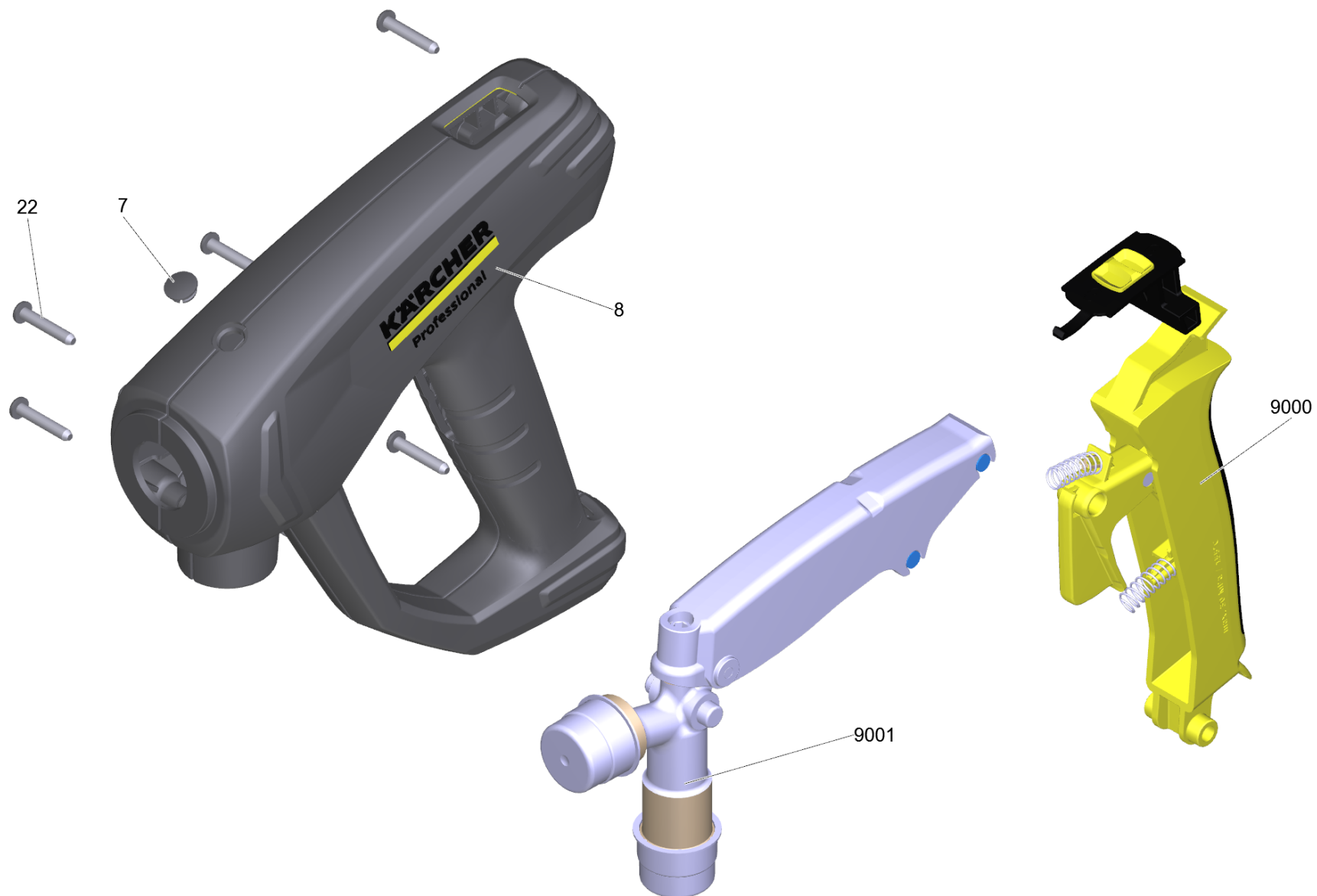
50 Kärcher HD (0.250-996.0)

POS	Article no.	Description	Quantity	Unit	Remark
62	9.802-762.0	SCREW, 10/32" x 1-1/4" RH, SL, BLK	1.000	ST	301.0,302.0,303.0,304.0,305.0,306.0,307.0,308.0,309.0,310.0
62	9.802-762.0	SCREW, 10/32" x 1-1/4" RH, SL, BLK	2.000	ST	
63	9.802-759.0	SCREW, 10/32" x 1/2" BHSOC BLK	11.000	ST	303.0,304.0,305.0,306.0,307.0,308.0
64	9.802-695.0	NUT, 10/32" KEPS	4.000	ST	300.0
64	9.802-695.0	NUT, 10/32" KEPS	10.000	ST	
65	9.800-020.0	LABEL, COLD WATER INLET	1.000	ST	301.0,302.0,303.0,304.0,305.0,306.0,307.0,308.0,309.0,310.0
66	9.803-279.0	STRAIN RELIEF,CG100-750,1" YEL(10-4COR	1.000	ST	306.0,307.0,308.0,309.0,310.0
66	9.802-518.0	STRAIN RELIEF, LT, STR, 3/4 NPT .49-.71D	1.000	ST	301.0,302.0,303.0,304.0,305.0
66	9.803-278.0	STRAIN RELIEF, STRT, LQ TITE, 3/4, 3460	1.000	ST	300.0
67	8.932-970.0	LABEL, COLD WATER OUTLET	1.000	ST	
68	9.800-007.0	ABS	1.000	ST	
69	9.800-013.0	LABEL,ASSLD USA INTENDED FOR INDOOR USE	1.000	ST	
70	9.802-524.0	*LOCKNUT, 1/2" CONDUIT	1.000	ST	NOT SHOW (TIME DELAY/AUTO-START OPTION)
70	9.802-514.0	STRAIN RELIEF, LT, Str, 1/2 NPT,.23-.45D	1.000	ST	(TIME DELAY/AUTO-START OPTION)
71	9.802-424.0	CORD, SERV, 16/4, SEOOW, /FT	2.500	FT	(TIME DELAY SHUTDOWN OPTION)
71	9.802-423.0	CORD, SERV, 16/3, SEOOW, /FT	2.500	FT	
72	9.802-779.0	NUT, 3/8", ESNA, NC	4.000	ST	
73	8.718-980.0	WASHER, 5/16" FLAT, SAE (780452)	4.000	ST	
74	9.802-467.0	BASE, RELAY, SH2B-05, IDEC	1.000	ST	(TIME DELAY SHUTDOWN OPTION)
75	9.802-468.0	RELAY, 120V, RH2B-UL-AC120	1.000	ST	(TIME DELAY SHUTDOWN OPTION)
76	8.751-306.0	TIMER, MULTI-FUNCTION, 24V-120/240V 5A	1.000	ST	(TIME DELAY SHUTDOWN OPTION)
77	9.802-472.0	TIMER, 24-240V 5-60MIN W/LOCK OUT	1.000	ST	(AUTO START/STOP OPTION)
78	9.800-049.0	LABEL, MANUFACTURER'S CLEANING SOLUTION	1.000	ST	
79	8.932-985.0	LABEL, KARCHER, STRIPE, 17" x 3.875"	2.000	ST	
80	9.802-802.0	WASHER, 1/4" FLAT SAE ZINC	8.000	ST	
81	9.802-700.0	BOLT, 1/4-20 X 3/4", NC HH (612937)	4.000	ST	
82	8.718-858.0	NUT, 10/32', HEX(703126)	4.000	ST	



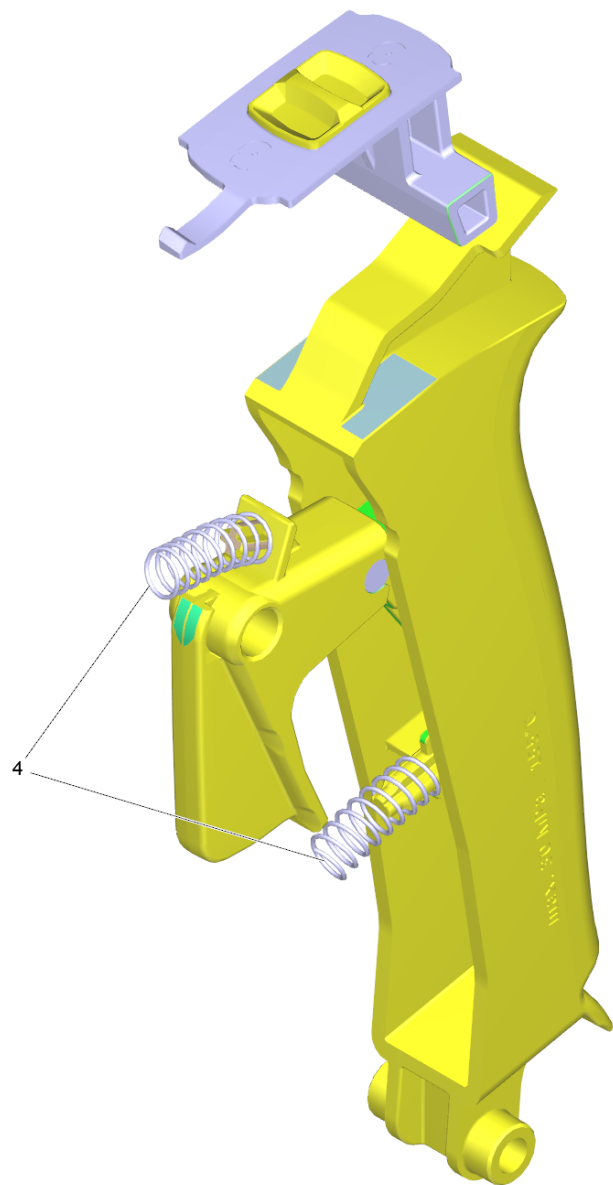
60 HOSE AND SPRAY GUN (0.251-007.0)

POS	Article no.	Description	Quantity	Unit
1	9.802-166.0	Coupler 3/8"SOCKET, FEMALE, BRASS	1.000	ST
2	8.917-057.0	HOSE 3/8"X50,1W,TS,SO-SW, CP	1.000	ST
3	4.775-054.0	EASY Force Advanced KNA	1.000	ST
4	9.802-219.0	WAND ASSY, SIDE GRIP W/ 1/4" COUPLER,35	1.000	ST
5	8.712-398.0	Nozzle kpl., QCEM-6540 Mess. (CHEM)	1.000	ST
6	8.712-361.0	NOZZLE, SAQCMEG 0006, RED	1.000	ST
7	8.756-797.0	INJECTOR, CHEMICAL, NON ADJ 0.083(2.1MM)	1.000	ST
8	9.802-164.0	COUPLER, 1/4"SOCKET, FEMALE, BRASS	1.000	ST
8	9.802-096.0	O-RING, COUPLER QUICK 1/4'	1.000	ST
20	9.802-100.0	O-RING, QUICK COUPLER, 3/8'	1.000	ST



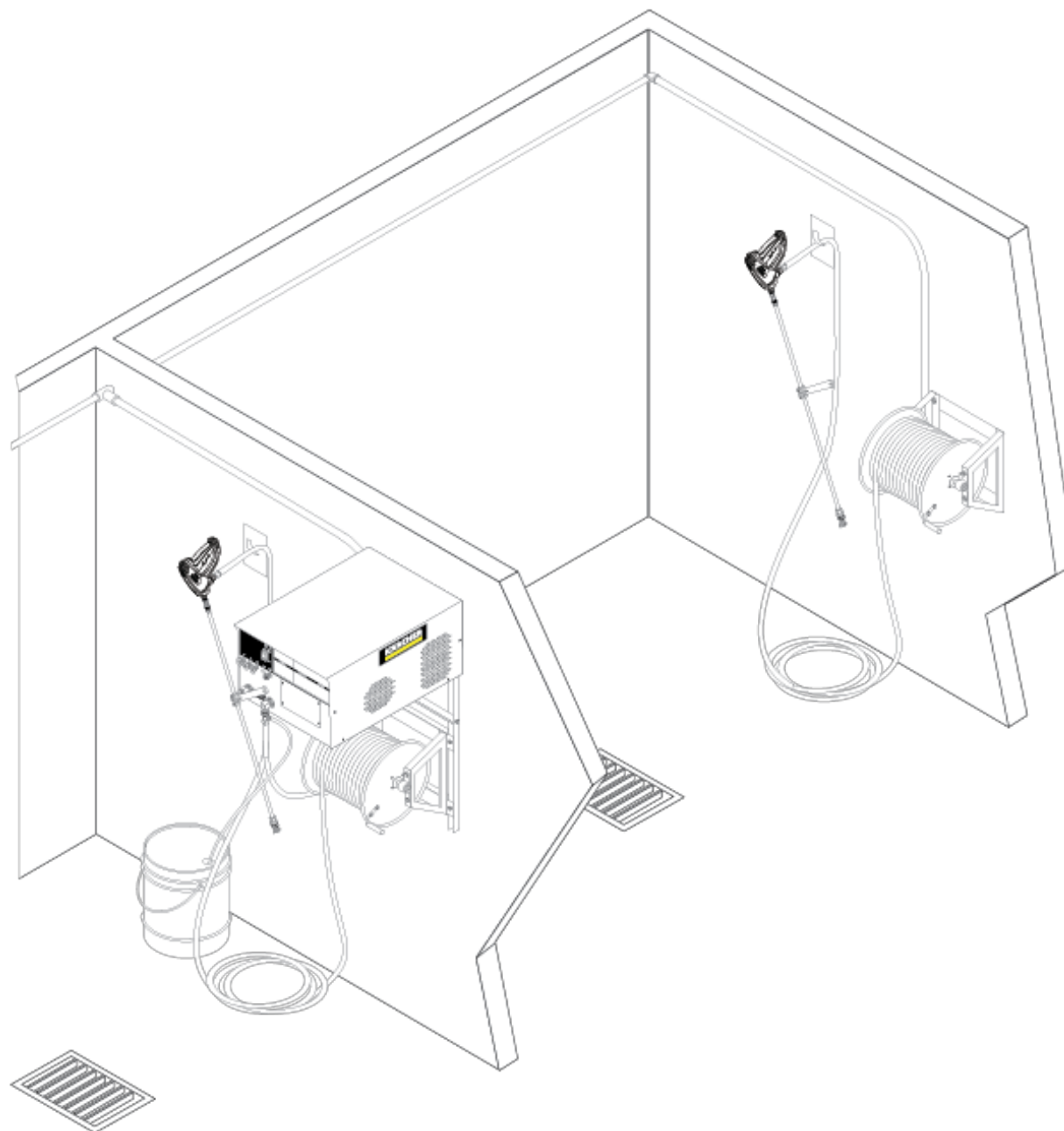
3 EASY Force Advanced KNA (4.775-054.0)

POS	Article no.	Description	Quantity	Unit
7	5.132-001.0	Plug	1.000	ST
8	5.321-136.3	Handhold few EH 155 only for replacement	1.000	ST
22	7.303-096.0	Screw 4x22 -ST-10.9-R2R (IN6RD)	7.000	ST
9000	2.885-483.0	Spare part set lever	1.000	ST
9001	4.427-025.0	Manifold EH 155 only for replacement	1.000	ST



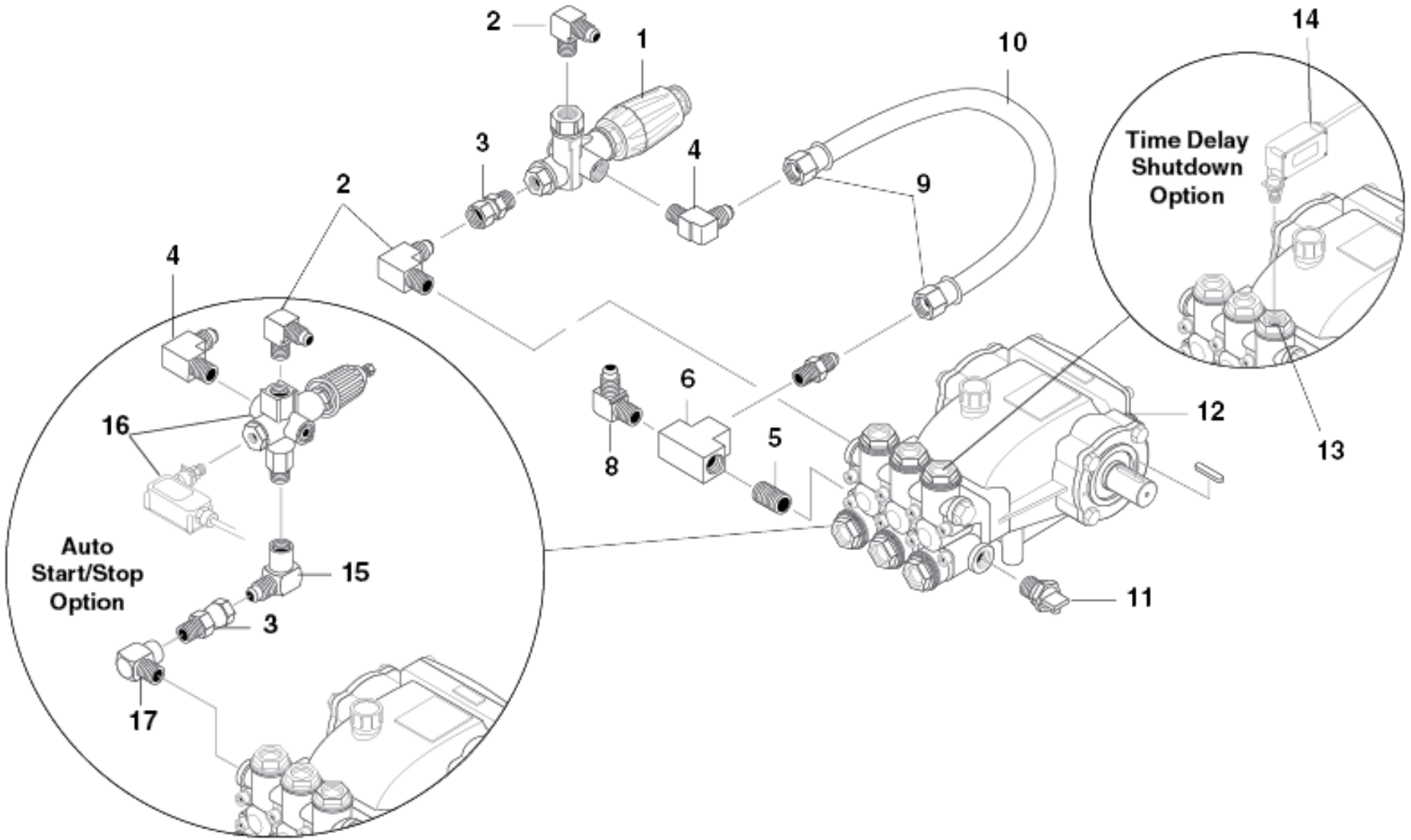
9000 Spare part set lever (2.885-483.0)

POS	Article no.	Description	Quantity	Unit
4	5.332-032.0	Helical spring	2.000	ST



70 MULTI-ROOM INSTALLATION (0.251-008.0)

POS	Article no.	Description	Quantity	Unit
10	0.251-010.0	MULTI-ROOM BOM	1.000	ST

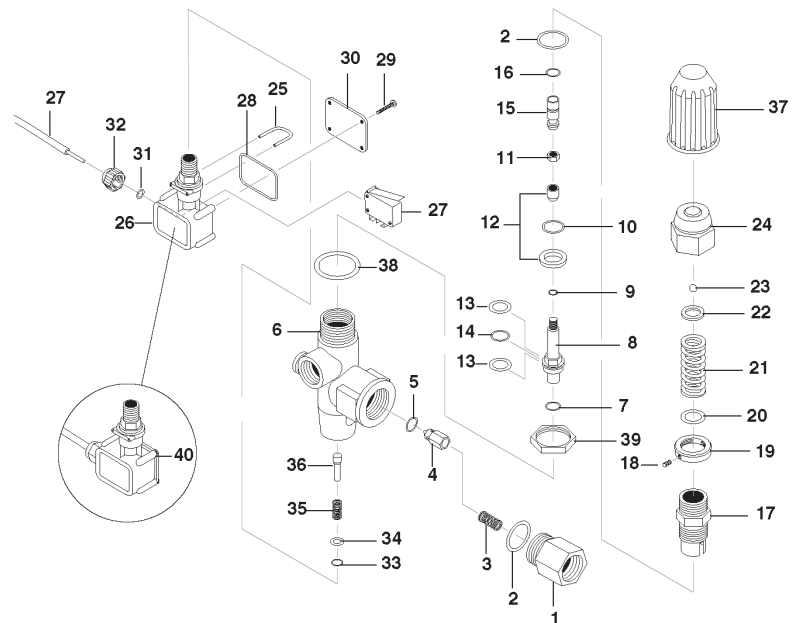


80 PUMP (0.251-009.0)

POS	Article no.	Description	Quantity	Unit	Remark
1	8.750-299.0	UNLOADER, VRT3, 8 GPM @4500 PSI	1.000	ST	
2	9.802-039.0	Elbow 1/2" JIC x 3/8" MPT STEEL	1.000	ST	
3	9.802-048.0	Swivel 1/2" JIC FPT, 3/8" MPT STEEL	1.000	ST	
4	9.802-129.0	ELBOW, 1/2" MSAE X 3/8" MPT, BRASS	1.000	ST	
5	8.706-790.0	NIPPLE, 1/2" CLOSE, BRASS	1.000	ST	
6	8.706-844.0	TEE, 1/2" FEMALE, PIPE	1.000	ST	
7	9.802-128.0	NIPPLE, 1/2" JIC x 1/2" MPT BRASS	1.000	ST	
8	9.802-131.0	ELBOW, 1/2" MSAE x 1/2" MPT, BRASS	1.000	ST	
9	9.802-151.0	SWIVEL, 1/2" BARB x 1/2"JIC, FEM/BRASS	2.000	ST	
10	9.802-259.0	HOSE, 1/2" PUSH-ON, /FT	18.000	ST	
11	9.803-670.0	PUMP PROTECTOR, 1/2" 190 DEG	1.000	ST	
12	9.804-006.0	PUMP, KARCHER KD3030R.1, 3@3000,1650 RPM	1.000	ST	
12	8.751-189.0	PUMP, KARCHER KM4035R.3, 4.8@3500 1500RP	1.000	ST	
13	9.804-022.0	CAP, VALVE 22MM, W/1/4" GAUGE PORT LG/LD	1.000	ST	(TIME DELAY SHUTDOWN OPTION 300.0)
13	9.802-632.0	CAP, VALVE 24MM, W/ 1/4" GAUGE PORT	1.000	ST	(TIME DELAY SHUTDOWN OPTION) (ALL EXCEPT 300.0)
14	9.802-458.0	Switch PRESSURE N/O, 1/4 NPT SS	1.000	ST	(TIME DELAY SHUTDOWN OPTION)
15	9.802-042.0	ELBOW, 1/2 JIC X 3/8 FEM, 90DGR, ST	1.000	ST	(AUTO START/STOP OPTION)
16	9.802-362.0	UNLOADER, PA 8@3650, VB8 W/SWITCH (N/C)	1.000	ST	(AUTO START/STOP OPTION)
17	8.706-207.0	Elbow 3/8", Street 90 Deg, Steel	1.000	ST	

VB8 Unloader Valve

9.802-362.0
PA 8@3650



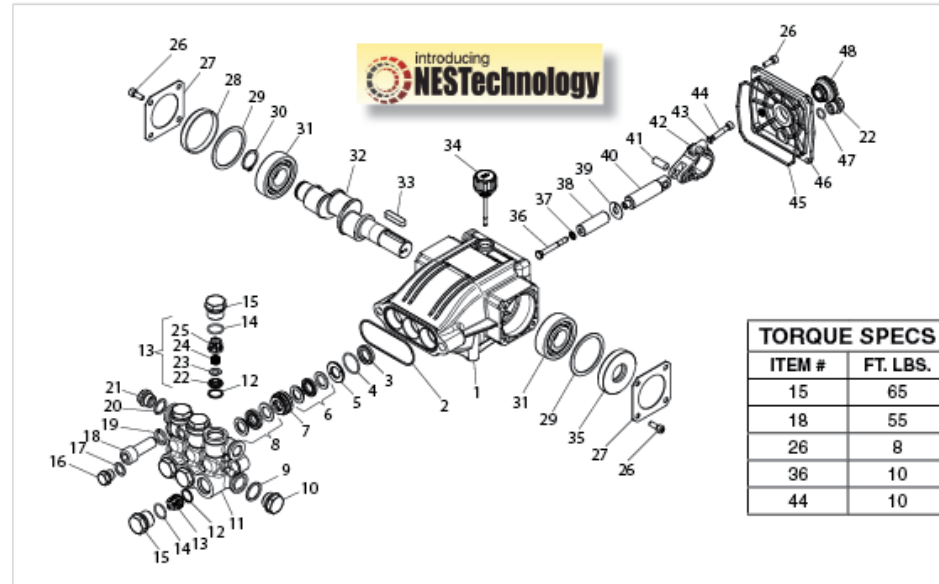
VB8 Unloader Valve

REF	PART NO.	QTY	DESCRIPTION	NOTES
1	60.0059.31	1	3/8 BSP F OUTLET FITTING	
2	10.3070.02*	2	O-RING 1.78 X 18.77 MM	
3	60.0053.51	1	O-SPRING	
4	60.0052.31	1	CHECK VALVE	
5	10.3213.00*	1	O-RING 3 X 6 MM	
6	60.1215.35	1	VB8 BRASS BODY	
7	10.3170.08*	1	O-RING 2, 62 X 7.6 MM	
8	60.1206.51	1	PISTON	
9	10.3001.01*	1	O-RING 1 X 4 MM	
10	10.3066.01*	1	O-RING 1.78 X 15.6 MM	
11	60.1205.31	1	M 6 NUT BRASS	
12	60.2221.20*	1	VB8/9 SEAT+SHUTTER	
13	10.4021.00*	2	BACK RING 11.4 X 15.9 MM	
14	10.3175.00*	1	O-RING 2.62 X 10.77 MM	
15	60.1204.31	1	SPRING GUIDE	
16	10.3167.01*	1	O-RING 2.62 X 5.23 MM	
17	60.1203.31	1	PISTON HOUSING	
18	16.2100.00	1	M 4 X 4 MM DOWEL	
19	60.1207.31	1	M 22 NUT	
20	14.3719.00	1	WASHER 9 X 15 MM	
21	60.1208.61	1	3.2 X 33 MM SPRING	
22	60.1210.31	1	UPPER FRAME	
23	14.7421.50	1	1/4" BALL	
24	60.1209.31	1	BRASS CAP	
25	29.0087.51	1	SST CLIP	
26	29.0089.84	1	PLASTIC HOUSING	
27	8.750-169.0	1	EL. CABLE + MICRO SWITCH	
28	10.3206.01	1	O-RING 2.62 X 28.25 MM	
29	16.3020.00	2	2.5 X 12 MM SCREW	
30	29.0088.84	1	COVER	
31	10.3169.00	1	O-RING 2.62 X 6.02 MM	
32	29.0082.84	1	BLACK NUT-40 BAR	
33	10.3038.00	1	O-RING 1.78 X 3.68 MM	
34	14.3519.53	1	SST WASHER 4 X 8 MM	
35	60.2303.51	1	SPRING	
36	60.1281.31	1	PR 5 PIN	
37	60.1202.84	1	PLASTIC HANDLE (60.1290.00)	
38	14.3582.00	1	WASHER D. 30 MM (60.1290.00)	
39	60.2254.31	1	M 30 NUT (60.1290.00)	
40	29.0096.24	1	PR 5 PL HOUSING KIT	
Kit P/N Description				
*K1	*8.750-168.0	1	Repair Kit VB8	

90 VB8 UNLOADER VALVE (0.251-011.0)

POS	Article no.	Description	Quantity	Unit
1	9.802-362.0	UNLOADER, PA 8@3650, VB8 W/SWITCH (N/C)	1.000	ST

HB Series Pump Exploded View



REF	PART NO.	QTY	DESCRIPTION	NOTES
1	8.754-841.0	1	CRANKCASE	
2	8.754-846.0	1	O-RING Ø1.78 X 72.75	
3	-	3	PLUNGER OIL SEAL	SEE KITS TABLE
4	-	3	O-RING Ø1.78 X 26.7	SEE KITS TABLE
5	-	3	WASHER, PRESSURE RING 16 MM	SEE KITS TABLE
6	-	3	U-SEAL, 16 MM	SEE KITS TABLE
7	-	3	PRESSURE RING, 16 MM	SEE KITS TABLE
8	-	3	U-SEAL, 16 MM	SEE KITS TABLE
9	9.803-199.0	1	WASHER, COPPER G1/2	
10	9.802-926.0	1	PLUG, BRASS G1/2	
11	8.754-852.0	1	MANIFOLD	
12	8.717-233.0	6	O-RING Ø1.78 X 15.6	SEE KITS TABLE
13	-	6	VALVE ASSEMBLY	SEE KITS TABLE
14	9.803-948.0	6	O-RING Ø1.78 X 18.77	SEE KITS TABLE
15	9.803-949.0	6	VALVE PLUG	
16	8.754-851.0	1	PLUG, BRASS G1/4	
17	8.718-973.0	1	WASHER, COPPER G1/4	
18	8.754-854.0	2	BOLT, MANIFOLD M14 X 40	
19	8.754-850.0	2	WASHER, LOCK	
20	9.803-198.0	1	WASHER, COPPER G3/8	

HB Series Pump Exploded View Parts List

REF	PART NO.	QTY	DESCRIPTION	NOTES
21	8.707-262.0	2	PLUG, BRASS G3/8	
22	-	6	VALVE SEAT	SEE KITS TABLE
23	-	6	VALVE PLATE	SEE KITS TABLE
24	-	6	VALVE SPRING	SEE KITS TABLE
25	-	6	VALVE CAGE	SEE KITS TABLE
26	9.802-939.0	12	SCREW, M6 X 16	
27	8.717-137.0	2	BEARING COVER	
28	9.803-954.0	1	BEARING SEAL	
29	8.754-843.0	2	SEAL SPACER, CRANKSHAFT	
30	9.802-914.0	1	SNAP RING, 25 MM	
31	9.803-955.0	2	BEARING, BALL	
32	8.754-829.0	1	SHAFT, 24 MM 3030	
-	8.754-830.0	1	SHAFT, 24 MM 4025	
33	9.803-167.0	1	KEY, CRANKSHAFT	
34	8.754-219.0	1	OIL DIPSTICK	
35	8.933-010.0	1	SEAL, CRANKSHAFT	
36	8.754-855.0	3	BOLT, PLUNGER	SEE KITS TABLE
37	8.754-092.0	3	SPACER, COPPER	SEE KITS TABLE
38	8.754-848.0	3	PLUNGER, 16 MM	SEE KITS TABLE
39	9.803-962.0	3	SPACER, COPPER	SEE KITS TABLE
40	8.754-827.0	3	PLUNGER ROD	
41	9.803-965.0	3	CONNECTING ROD PIN	
42	9.803-966.0	3	CONNECTING ROD	
43	9.803-218.0	6	WASHER, 6 MM	
44	8.933-020.0	6	SCREW, CONNECTING ROD	
45	8.754-847.0	1	O-RING Ø2.62 X 111.62	
46	8.754-842.0	1	COVER, CRANKCASE	
47	9.803-906.0	1	O-RING Ø1.78 X 14	
48	9.803-202.0	1	SIGHT GLASS, G3/4	

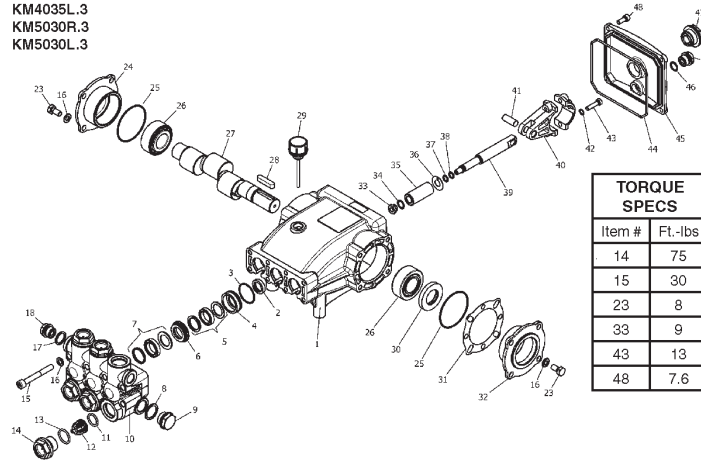
KIT NUMBERS	8.754-856.0	8.754-857.0	8.754-858.0	8.754-859.0	9.803-937.0
KIT DESCRIPTION	Plunger Seals 16 mm	Seal Packing 16 mm	Plunger 16 mm	Complete Valve	Plunger Oil Seals
ITEM NUMBERS INCLUDED	4, 6, 8	4, 5, 6, 7, 8	36, 37, 38, 39	12, 13, 14	3
NUMBER OF CYLINDERS KIT WILL SERVICE	3	1	1	6	3

100 B SERIES PUMP (0.250-970.0)

POS	Article no.	Description	Quantity	Unit
1	0.250-939.0	Kit Group	1.000	ST

KM.3 Series Pump

8.751-186.0 KM3540R.3
 8.751-187.0 KM4030R.3
 8.751-188.0 KM4030L.3
 8.751-189.0 KM4035R.3
 8.751-190.0 KM4035L.3
 8.751-191.0 KM5030R.3
 8.751-192.0 KM5030L.3



REF	PART NO.	QTY	DESCRIPTION	NOTES
1	8.751-216.0	1	CRANKCASE	
2	-	3	PLUNGER OIL SEAL	SEE KITS TABLE
3	-	3	O-RING Ø1.78 X 31.47	SEE KITS TABLE
4	-	3	PRESSURE RING	SEE KITS TABLE
5	-	3	U-SEAL	SEE KITS TABLE
6	-	3	INTERMEDIATE RING	SEE KITS TABLE
7	-	3	U-SEAL	SEE KITS TABLE
8	9.803-199.0	1	WASHER, COPPER	
9	9.802-926.0	1	PLUG, BRASS 1/2	
10	8.751-218.0	1	MANIFOLD HEAD	
11	-	6	O-RING Ø2.62 X 17.13	SEE KITS TABLE
12	-	6	VALVE ASSEMBLY	SEE KITS TABLE
13	-	6	O-RING Ø2.62 X 20.29	SEE KITS TABLE
14	9.802-928.0	6	VALVE PLUG	
15	9.802-938.0	8	MANIFOLD STUD BOLT	
16	9.802-884.0	16	WASHER	
17	9.803-198.0	1	COPPER WASHER 3/8	
18	9.802-925.0	1	BRASS PLUG 3/8	
23	9.802-944.0	8	SCREW, HEX, 8MM X18MM	

KM.3 Series Pump

REF	PART NO.	QTY	DESCRIPTION	NOTES
24	8.717-210.0	1	CLOSED BEARING HOUSING	
25	9.803-192.0	2	O-RING Ø1.78 X 60.05	
26	8.933-011.0	2	TAPERED ROLLER BEARING	
27	8.751-222.0	1	CRANKSHAFT (5030,3540)	
-	8.751-223.0	1	CRANKSHAFT (4030, 4035)	
28	9.803-167.0	1	CRANKSHAFT KEY	
29	9.802-921.0	1	OIL DIP STICK	
30	9.803-140.0	1	CRANKSHAFT SEAL	
31	9.803-178.0	2	SHIM	
32	8.717-209.0	1	BEARING HOUSING	
33	-	3	PLUNGER NUT, M8	SEE KITS TABLE
34	-	3	COPPER SPACER	SEE KITS TABLE
35	-	3	PLUNGER (4035)	SEE KITS TABLE
-	-	3	PLUNGER (4030, 5030)	SEE KITS TABLE
-	-	3	PLUNGER (3540)	SEE KITS TABLE
36	-	3	COPPER SPACER	SEE KITS TABLE
37	-	3	O-RING Ø1.78 X 7.66	SEE KITS TABLE
38	-	3	TEFLON RING	SEE KITS TABLE
39	8.751-224.0	3	PLUNGER ROD	
40	9.803-158.0	3	CONNECTING ROD	
41	8.751-228.0	3	CONNECTING ROD PIN	
42	9.803-218.0	6	SPRING WASHER	
43	9.803-238.0	6	CONNECTING ROD SCREW	
44	8.933-016.0	1	O-RING, Ø2.62 X 126.67	
45	8.751-229.0	1	CRANKCASE COVER	
46	9.803-197.0	1	O-RING, Ø1.78 X 14	
47	9.803-202.0	1	SIGHT GLASS 3/4	
48	9.802-939.0	5	COVER SCREW	

KIT NUMBERS	8.725-360.0	8.725-362.0	8.725-385.0	8.725-361.0	8.725-363.0	8.725-359.0
KIT DESCRIPTION	Plunger Seal 4035 18mm	Plunger Seal 4030 5030 20mm	Plunger Seal 3540 15mm	Complete Seal Packing 4035 18mm	Complete Seal Packing 4030 5030 20mm	Complete Seal Packing 3540 15mm
ITEM NUMBERS INCLUDED	3, 5, 7	3, 5, 7	3, 5, 7	3, 4, 5, 6, 7	3, 4, 5, 6, 7	3, 4, 5, 6, 7
NUMBER OF CYLINDERS KIT WILL SERVICE	3	3	3	1	1	1

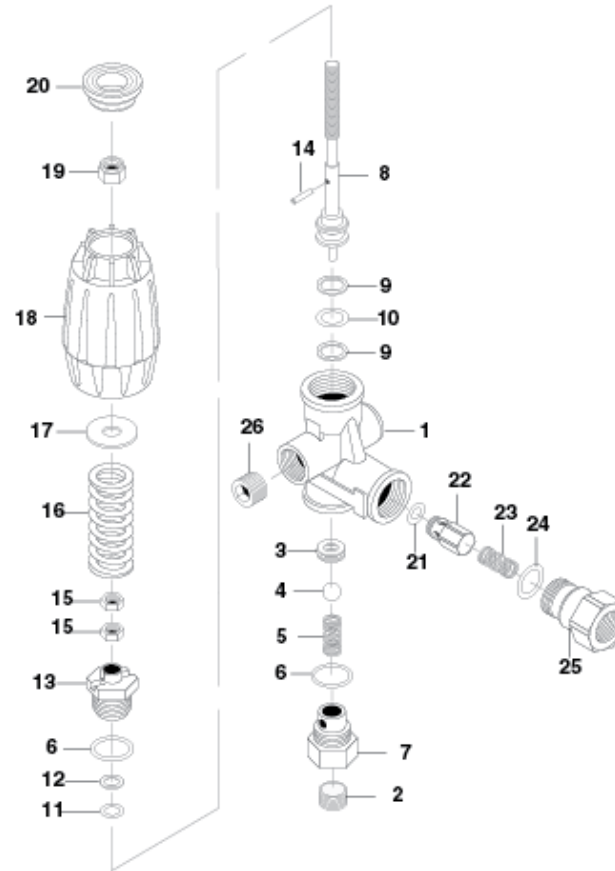
KIT NUMBERS	8.751-237.0	8.751-238.0	8.933-023.0	9.802-603.0	9.802-609.0
KIT DESCRIPTION	Plunger 4035 18mm	Plunger 4030 5030 20mm	Plunger 3540 15mm	Complete Valve	Plunger Oil Seals
ITEM NUMBERS INCLUDED	33, 34, 35, 36, 37, 38	33, 34, 35, 36, 37, 38	33, 34, 35, 36, 37, 38	11, 12, 13	2
NUMBER OF CYLINDERS KIT WILL SERVICE	1	1	1	6	3

110 KM.3 SERIES PUMP (0.251-012.0)

POS	Article no.	Description	Quantity	Unit
1		PUMP, KARCHER KM3540R.3, 3.5@4000 1850RP	1.000	ST
2		PUMP, KARCHER KM4030R.3, 4.0@3000 1000RP	1.000	ST
3		PUMP, KARCHER KM4030L.3, 4@3000 1000 RPM	1.000	ST
4	8.751-189.0	PUMP, KARCHER KM4035R.3, 4.8@3500 1500RP	1.000	ST
5		PUMP, KARCHER KM4035L.3, 4.8@3500 1500RP	1.000	ST
6		PUMP, KARCHER KM5030R.3, 5.1@3000 1550RP	1.000	ST
7		PUMP, KARCHER KM5030L.3, 5.1@3000 1550RP	1.000	ST

VRT3 Unloader

8.750-297.0, 8 GPM, 2320 PSI
 8.750-298.0, 8 GPM, 3630 PSI
 8.750-299.0, 8 GPM, 4500 PSI



REF	PART NO.	QTY	DESCRIPTION	NOTES
25	8.750-713.0	1	OUTLET FITTING	
18	8.750-712.0	1	KNOB, UNLOADER	
-	8.750-709.0	-	REPAIR KIT, VRT3, 2320/3630 PSI	
-	8.750-710.0	-	REPAIR KIT, VRT3, 4500 PSI	
-	-	-	(KIT ITEMS: 3, 4, 8, 9-12, 21, 24)	

Unloader Adjustment Procedures

1. Remove lock nut (Item 19).
2. Remove adjustment knob (Item 18).
3. Loosen the two (2) nuts (Item 15), move them upward on stem (Item 8) until you see 4 or more threads below the nut.
4. Re-attach adjusting knob (Item 18).
5. Start machine. Open the trigger of the spray gun. Increase pressure by turning adjustment knob (Item 18) clockwise until pressure is at the desired operating pressure.
6. Remove the adjustment knob (Item 18), tighten the lower nut (Item 15) tightly against the upper nut (Item 15). Re-attach adjustment knob (Item 18) and screw down until contact is made with the nuts (Items 15). Screw down lock nut (Item 19) onto the stem (Item 8) until the threads cut into the nylon insert of the lock nut (Item 19).

*If adjustment knob (Item 18) DOES NOT make contact with upper nut (Items 15), remove adjusting knob (Item 18), re-adjust (raise) nuts (Items 15) on stem (Item 8) and re-attach adjustment knob (Item 18), then repeat step #6.

**If adjustment knob (Item 18) DOES make contact with upper nut; release the trigger of the spray gun and watch the pressure gauge for the pressure increase ("spike"). This "spike" SHOULD NOT exceed 500 psi above the operating pressure. If "spike" pressure exceeds the 500 psi limit, remove the adjusting knob (Item 18) and re-adjust (lower) the nuts (Items 15) on the stem (Item 8). Re-attach the adjusting knob (Item 18), then repeat step #6.

120 VRT3 UNLOADER (0.250-972.0)

POS	Article no.	Description	Quantity	Unit
18	8.750-712.0	Bolt Perilla	1.000	ST
25	8.750-713.0	OUTLET FITTING, VRT3 UNLOADER	1.000	ST