

Spare parts list

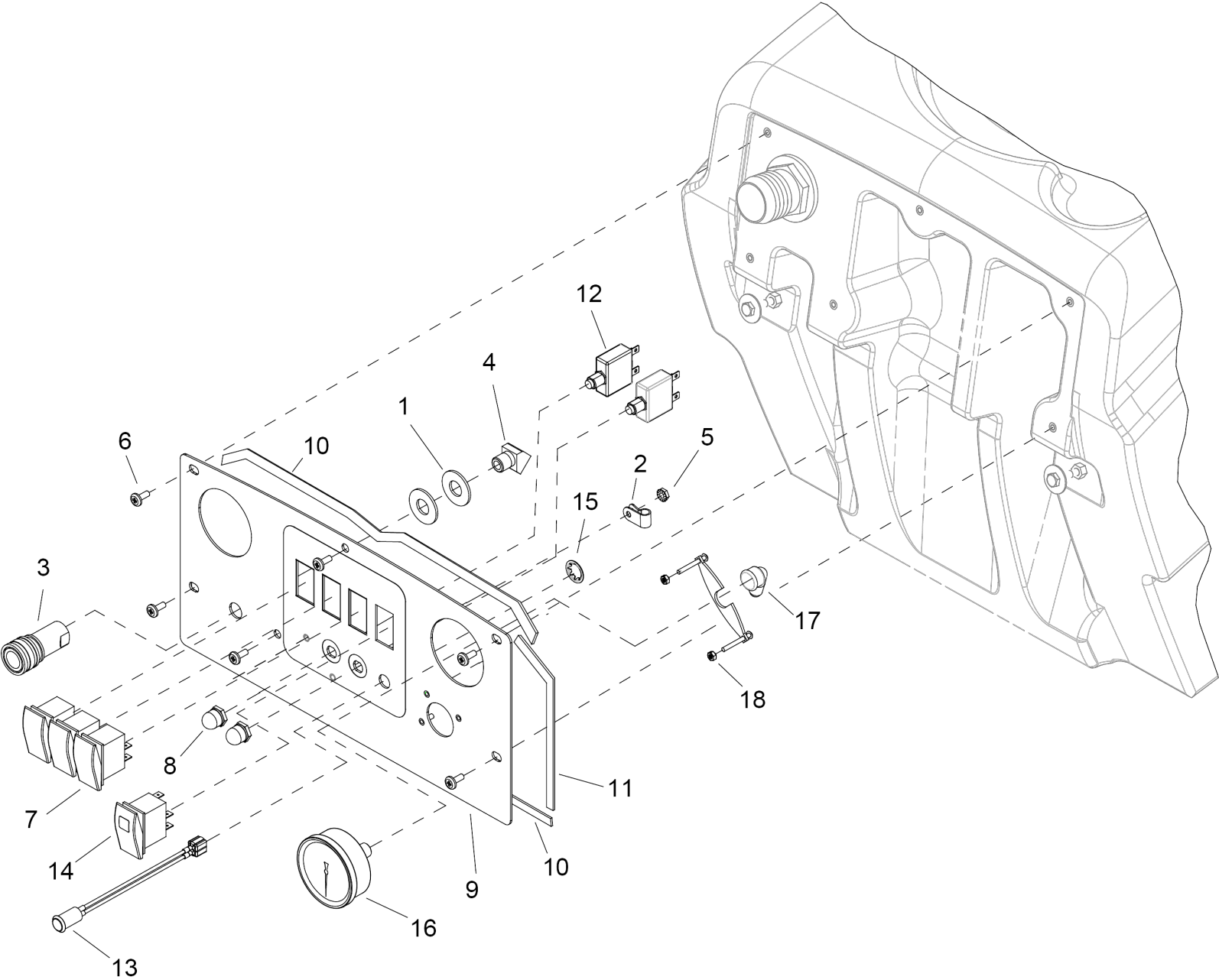
(1.006-673.0) PUZZI 50/14 E

Table of contents

PUZZI 50/14 E (1.006-673.0)	3
10 Control Panel	4
20 Electrical	6
30 Frame	8
40 Heater	10
50 Labels	12
60 Pump	14
70 Recovery	16
80 Solution	18
90 Vacuum, 2-Stage	20

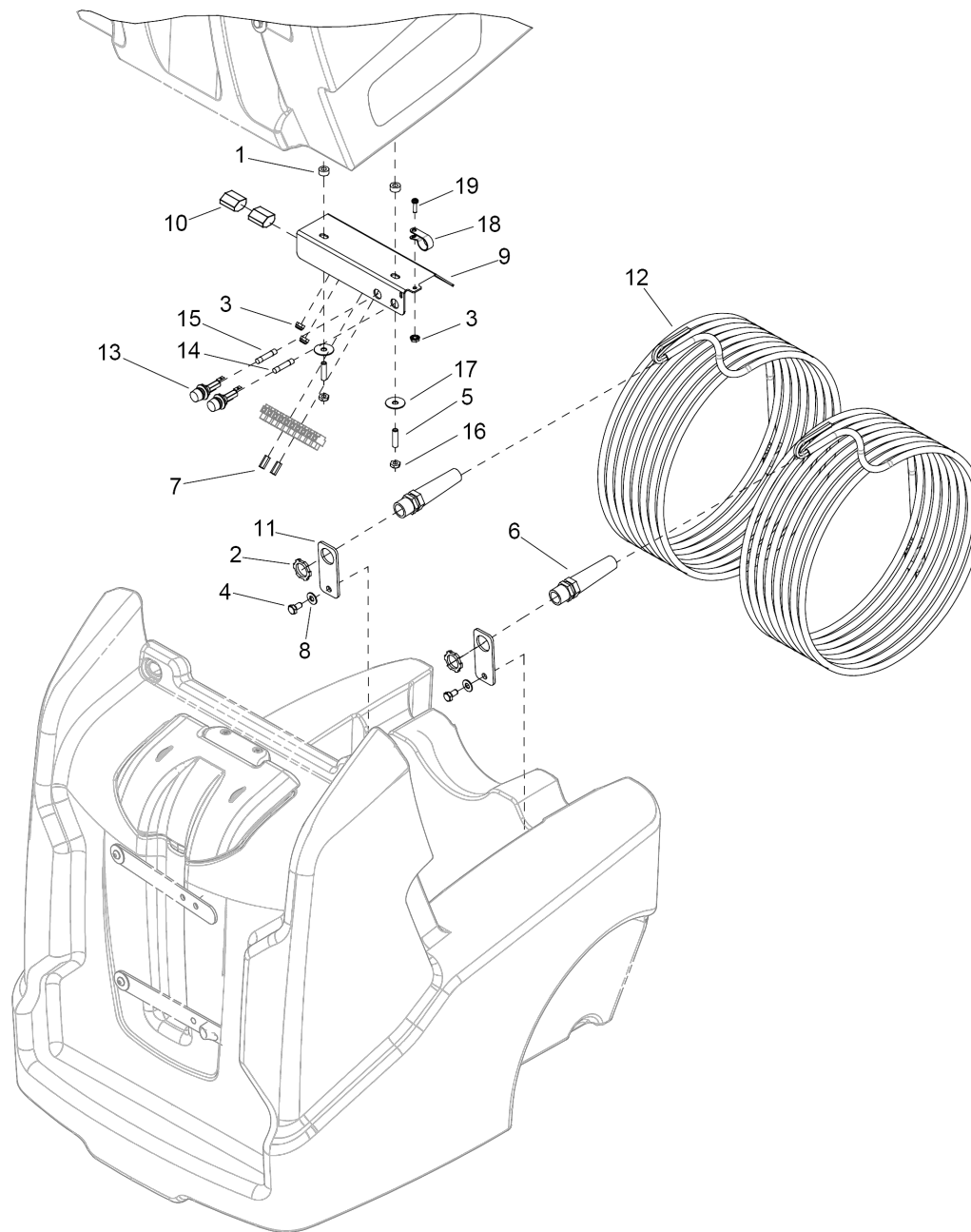
PUZZI 50/14 E (1.006-673.0)

POS	Description	Quantity	Unit
10	Control Panel	1	PC
20	Electrical	1	PC
30	Frame	1	PC
40	Heater	1	PC
50	Labels	1	PC
60	Pump	1	PC
70	Recovery	1	PC
80	Solution	1	PC
90	Vacuum, 2-Stage	1	PC



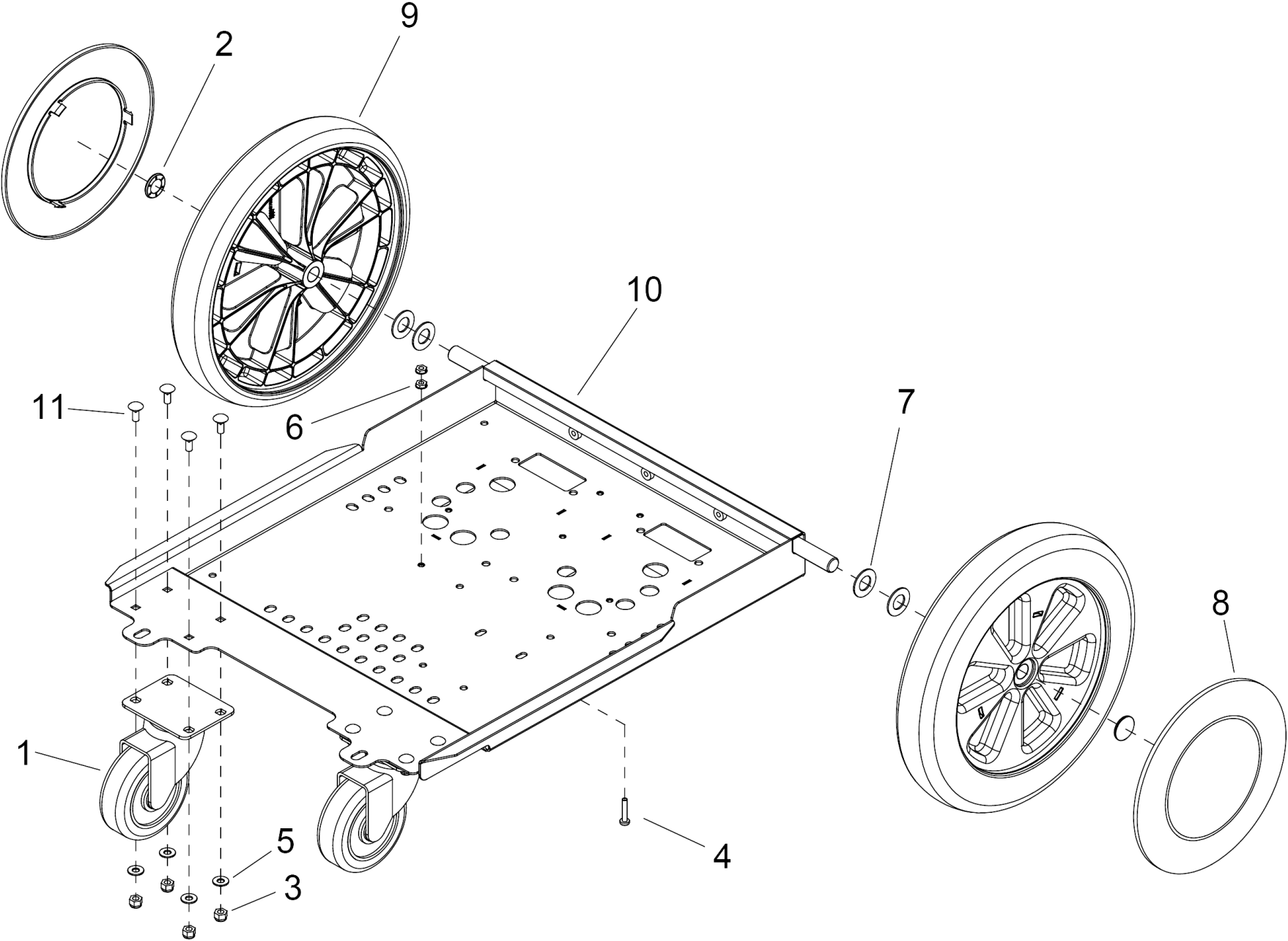
10 Control Panel

POS	Article no.	Description	Quantity	Unit
1	8.620-223.0	WASHER, 1/2 FLT SS	2	PC
2	8.600-237.0	Clamp 7/16 DIA NYLON UL	1	PC
3	8.600-245.0	Coupler 1/4 QD	1	PC
4	8.619-739.0	Elbow	1	PC
5	8.600-570.0	NUT, 10-32 HEXSTRW LK STL ZNPLT	2	PC
6	8.627-682.0	SCREW, 10-32 X .5 PHTRHMS	6	PC
7	8.600-714.0	Switch SPST 2-POSITION ROCKER	3	PC
8	8.600-890.0	Protecting cap motor protecting switch	2	PC
9	8.631-384.0	PANEL, CONTROL, 150/200	1	PC
10	8.631-302.0	GASKET, .125 T X .25 W X 15.6	2	PC
11	8.631-303.0	GASKET, .125 T X .25 W X 7.2	4	PC
12	8.631-832.0	BREAKER, 13A, 250VAC, 32VDC	2	PC
13	8.631-878.0	LIGHT ASM, HEATER, 120V	1	PC
14	8.631-785.0	SWITCH, LIGHTED 2-POS ROCKER	1	PC
15	8.623-348.0	CLIP, NEON LAMP	1	PC
16	8.632-331.0	GAUGE, 0-600 PSI	1	PC
17	8.618-035.0	ELL,1/4FPx1/4T BR	1	PC
18	7.777-999.0	Stockpiling discontinued	2	PC



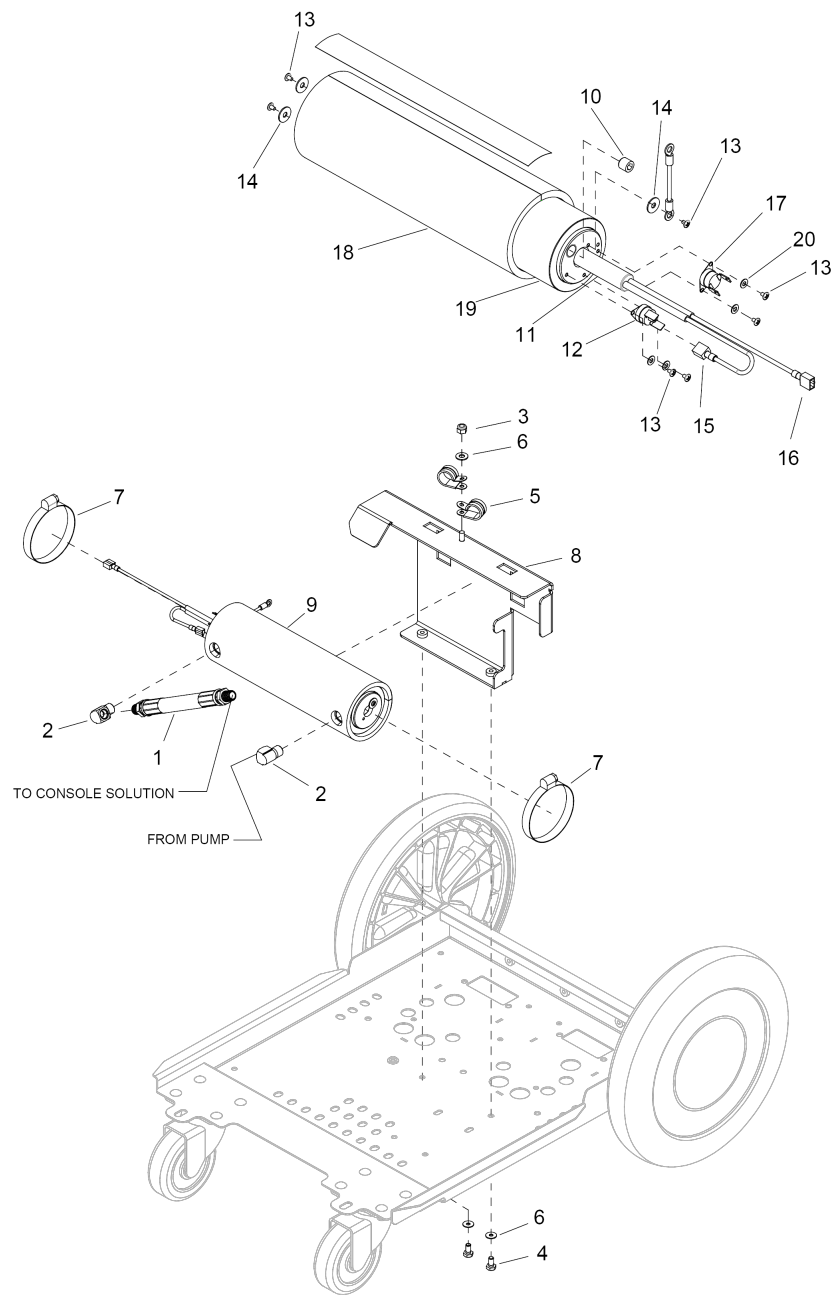
20 Electrical

POS	Article no.	Description	Quantity	Unit
1	8.620-151.0	WASHER, 1/4 X .5 X .25 NYL	2	PC
2	8.600-567.0	NUT, 1/2-14 CONDUIT LK STL ZNPLT	2	PC
3	8.600-570.0	NUT, 10-32 HEXSTRW LK STL ZNPLT	3	PC
4	8.627-383.0	SCREW, 1/4-20 X .5 HHCS SS NP	2	PC
5	8.600-685.0	SCREW, 1/4-20 X 1.25 SCHSET CP SS	2	PC
6	8.625-620.0	STRAIN RELIEF, 1/2 NPT FLEX	2	PC
7	8.625-590.0	Distance pin	2	PC
8	8.601-063.0	WASHER, 1/4 SS	2	PC
9	8.631-646.0	BRKT, ELECTRICAL	1	PC
10	8.631-654.0	CONNECTOR, 5 POS, PUSH WIRE	2	PC
11	8.631-670.0	BRKT, CORD STRAIN RELIEF	2	PC
12	8.631-862.0	CORD ASM, 14/3 SJT X 25' BLK	2	PC
13	8.631-909.0	FUSE HOLDER, PANEL MNT	2	PC
14	8.631-910.0	FUSE, 1/4" X 1-1/4", 15A	1	PC
15	8.631-911.0	FUSE, 1/4" X 1-1/4", 4A	1	PC
16	8.627-187.0	NUT, 1/4-20 HEXTHIN NYLOCK SS	2	PC
17	8.632-333.0	WASHER, 1/4 X 1 FNDR ZN BLK	2	PC
18	8.619-846.0	CLAMP, 5/8 NYLON UL/CSA	1	PC
19	8.600-659.0	SCREW, 10-32 X .5 PHPNHMS SS NP	1	PC



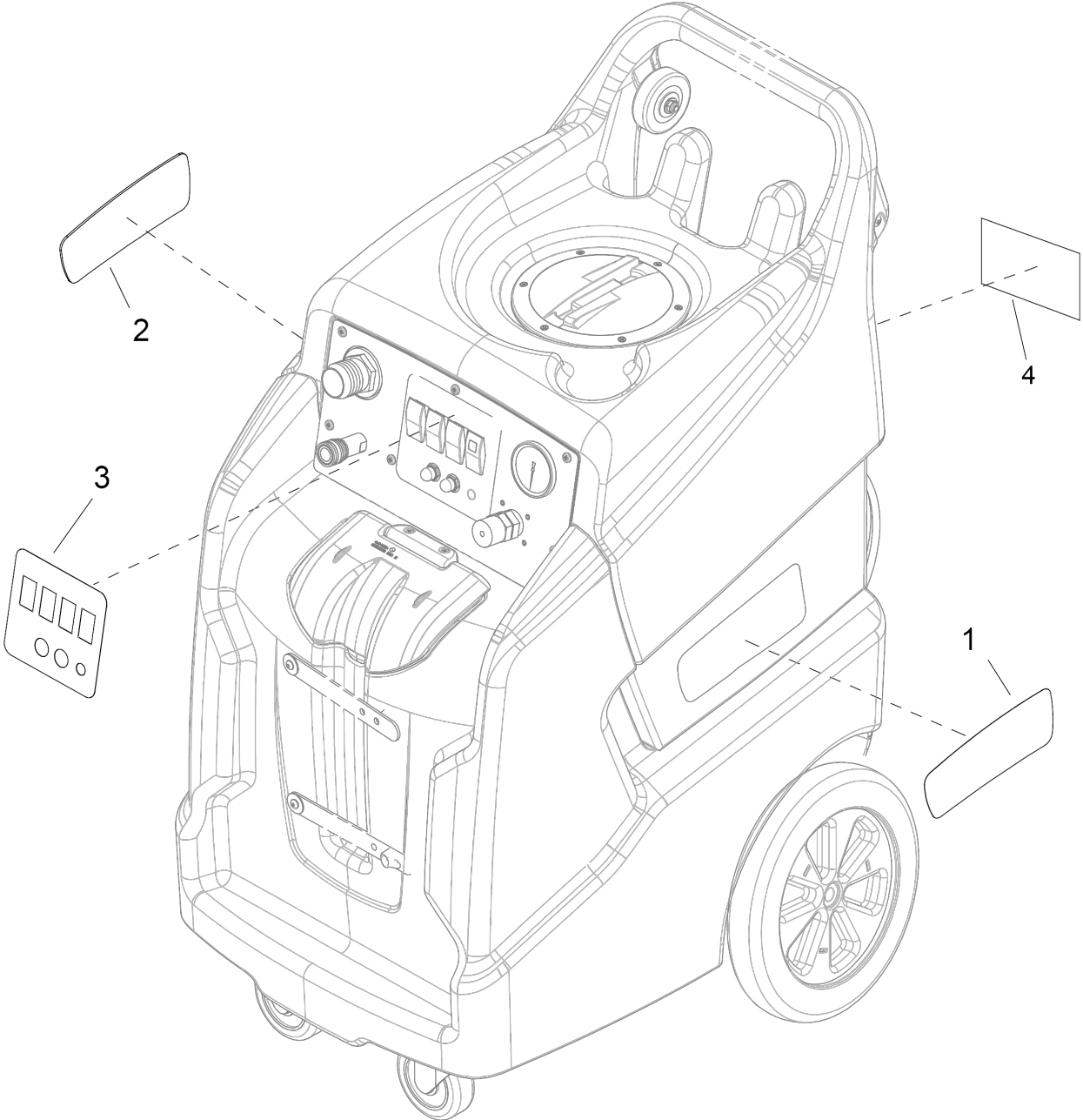
30 Frame

POS	Article no.	Description	Quantity	Unit
1	8.619-943.0	CASTER SWIVEL 4" 250# CPCTY	2	PC
2	8.600-166.0	HUBCAP, 5/8" SHAFT	2	PC
3	8.627-187.0	NUT, 1/4-20 HEXTHIN NYLOCK SS	8	PC
4	8.627-608.0	SCREW, 10-32 X 1 PHPNHMS STL GRN ZNPLT	1	PC
5	8.601-063.0	WASHER, 1/4 SS	8	PC
6	8.600-570.0	NUT, 10-32 HEXSTRW LK STL ZNPLT	2	PC
7	7.777-999.0	Stockpiling discontinued	4	PC
8	8.630-007.0	HUBCAP, 9.75" WHEEL, BLACK	2	PC
9	8.630-979.0	Wheel 12" x 2.25"	2	PC
10	8.631-283.0	FRAME, 5/8" AXLE, DUAL VAC	1	PC
11	8.627-750.0	SCREW, 1/4-20 X .625 CARR SS	8	PC



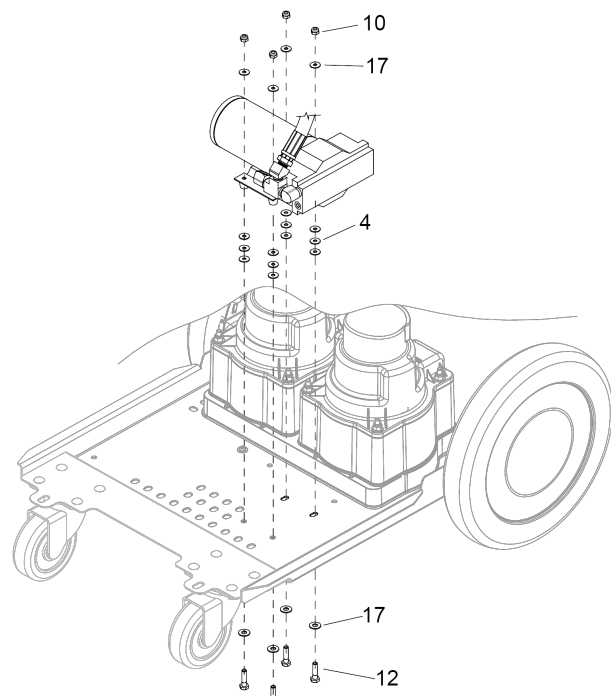
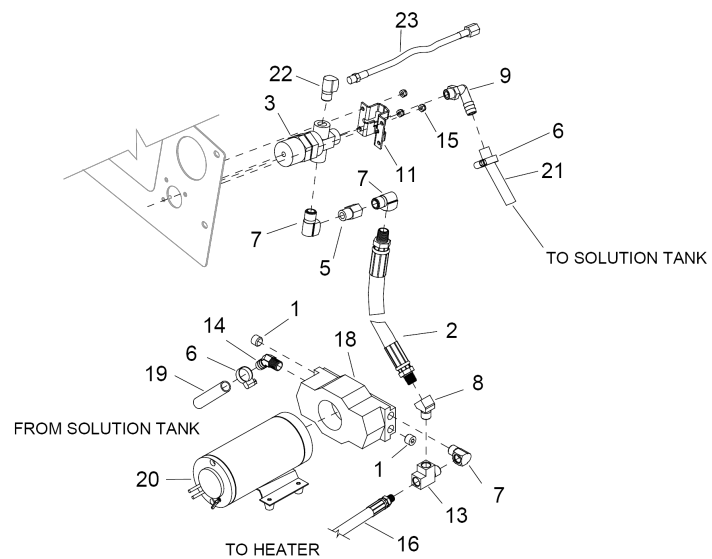
40 Heater

POS	Article no.	Description	Quantity	Unit
1	8.620-026.0	HOSE, PULSE 47.0 1/4MPTX1/4MPT	1	PC
2	7.777-999.0	Stockpiling discontinued	2	PC
3	8.627-187.0	NUT, 1/4-20 HEXTHIN NYLOCK SS	1	PC
4	8.627-383.0	SCREW, 1/4-20 X .5 HHCS SS NP	2	PC
5	8.623-341.0	Clamp	2	PC
6	8.601-063.0	WASHER, 1/4 SS	3	PC
7	8.623-326.0	CLAMP, 3.5" WORM GEAR	2	PC
8	8.631-841.0	BRKT, HEATER MOUNT	1	PC
9	8.931-560.0	Case heating Cart Welded	1	PC
10	7.777-999.0	Stockpiling discontinued	1	PC
11	8.619-998.0	HEATER ELEMENT 120V	1	PC
12	8.620-179.0	THERMOSTAT RESET 302	1	PC
13	8.620-087.0	PAN HD SH MTL SCREW 6 X 3/16 B	7	PC
14	8.601-065.0	WASHER, .203 X .562 X .040 FLT	3	PC
15	8.626-602.0	TERM, 14G .25 FEMALE COUPLER	1	PC
16	8.716-518.0	DISCONNECT, MALE, FULLY INS(954929)	1	PC
17	8.631-751.0	THERMOSTAT W/ VERT SPADE	1	PC
18	8.631-773.0	INSULATION, HEATER	1	PC
19	8.632-668.0	HEATER CART CASE, WELDED	1	PC
20	8.620-222.0	WASHER, 6 SS	4	PC



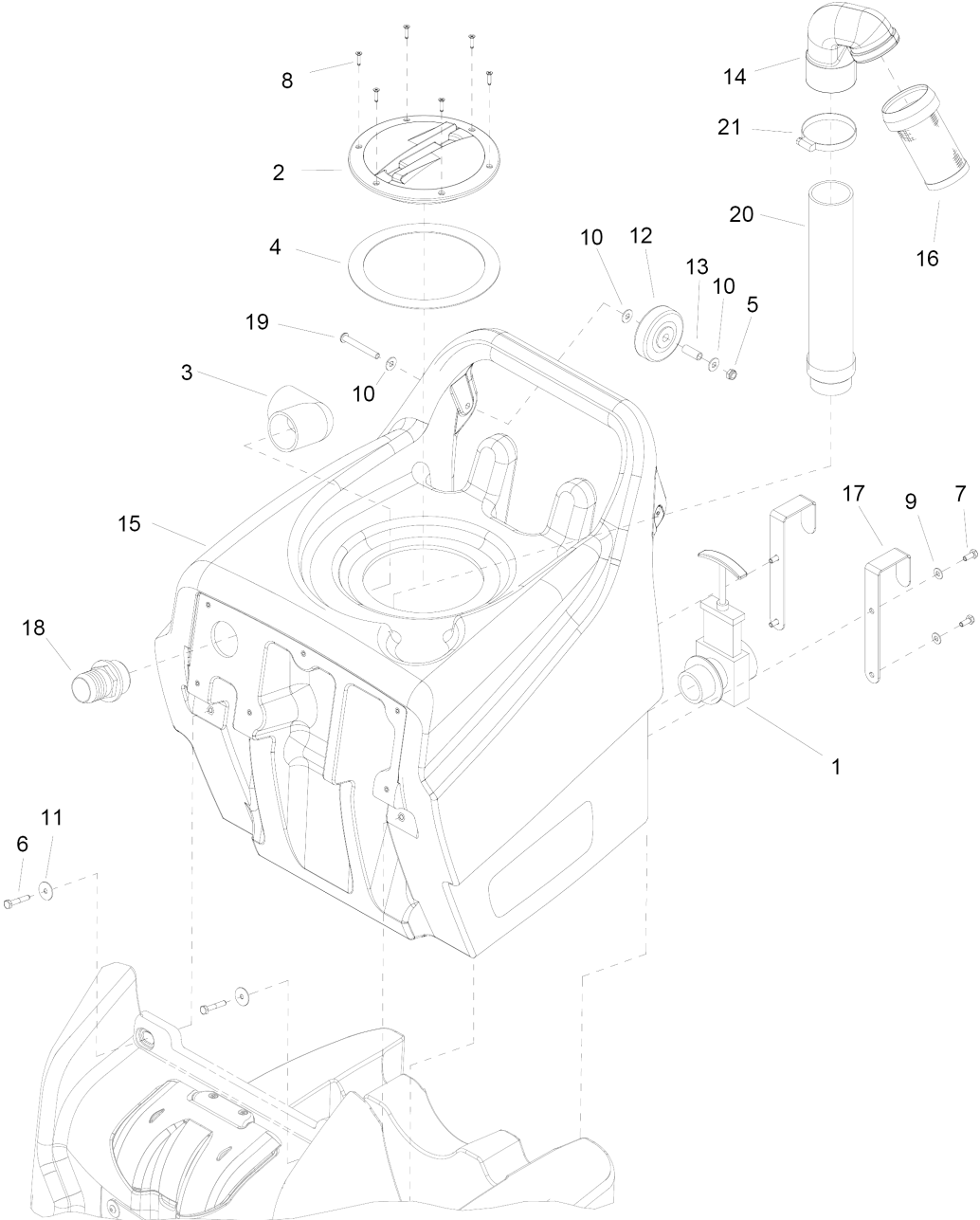
50 Labels

POS	Article no.	Description	Quantity	Unit
1	8.634-301.0	LABEL, RECOVERY, AKW, LH	1	PC
2	8.634-264.0	LABEL, RECOVERY, AKW, RH	1	PC
3	8.631-828.0	LABEL, NINJA, WARRIOR, W/HEAT	1	PC
4	8.758-134.0	Label QR code C. Extractor Puzzi 5014 E	1	PC



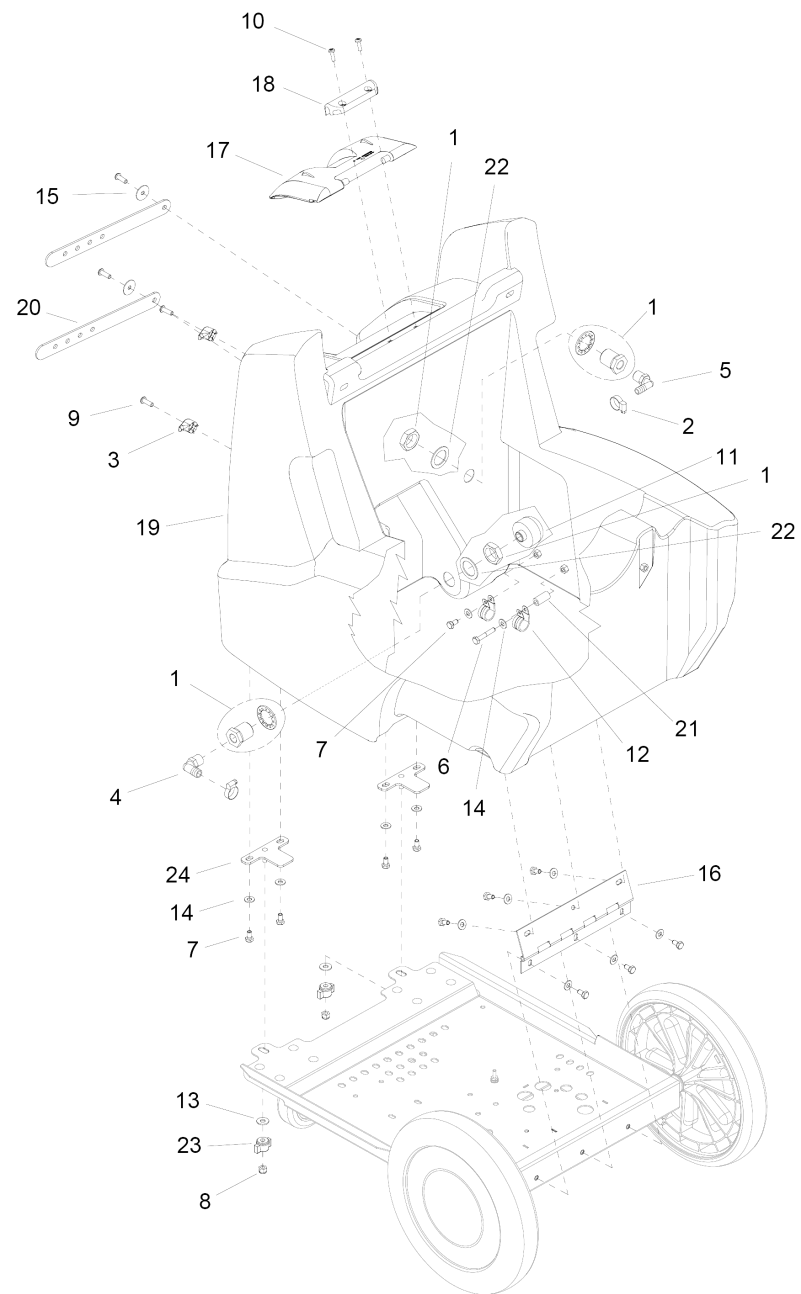
60 Pump

POS	Article no.	Description	Quantity	Unit
1	8.627-273.0	PLUG, 1/4 BRASS PIPE	2	PC
2	8.632-355.0	HOSE, 47" HP 1/4-MPT X 1/4-MPT	1	PC
3	8.619-958.0	D/B BPR 200PSI	1	PC
4	8.632-330.0	WASHER, .23 X .63 X .093 NPRN	12	PC
5	8.619-727.0	ADPTR, 1/4MPT X 1/4FPT BR	1	PC
6	8.623-315.0	CLAMP, 3/8 HOSE (D-SLOT)	2	PC
7	7.777-999.0	Stockpiling discontinued	3	PC
8	8.619-739.0	Elbow	1	PC
9	8.624-050.0	HOSEBARB, 1/4MPT X 3/8 9OD NYL	1	PC
10	8.718-860.0	NUT, 10/32", ESNA, SS	4	PC
11	8.635-574.0	BRKT, P/P BPR	1	PC
12	8.627-428.0	SCREW, 10-32 X 1.375 PHPNHMS SS	4	PC
13	8.619-776.0	TEE, 1/4 STREET	1	PC
14	8.618-490.0	HOSEBARB, 1/4MPT X 1/2H 45 BR	1	PC
15	8.627-085.0	Lock nut	3	PC
16	8.631-784.0	HOSE, PULSE 16.0 1/4 MPT X 1/4 MPT	1	PC
17	8.601-065.0	WASHER, .203 X .562 X .040 FLT	8	PC
18	8.620-114.0	PUMPTEC PUMP 200 PSI PMP HEAD	1	PC
19	8.631-839.0	HOSE, 1/2" ID WIRE BOUND X 42"	1	PC
20	8.631-897.0	MOTOR, M35, 120V, 15A	1	PC
21	8.632-147.0	HOSE, 3/8ID WIRE BOUND X 26"	1	PC
22	8.632-166.0	ELBOW, 1/4 MPT X 1/8 FPT	1	PC
23	8.631-759.0	HOSE, 10.0 1/4 JICX 1/8 MPT SS	1	PC



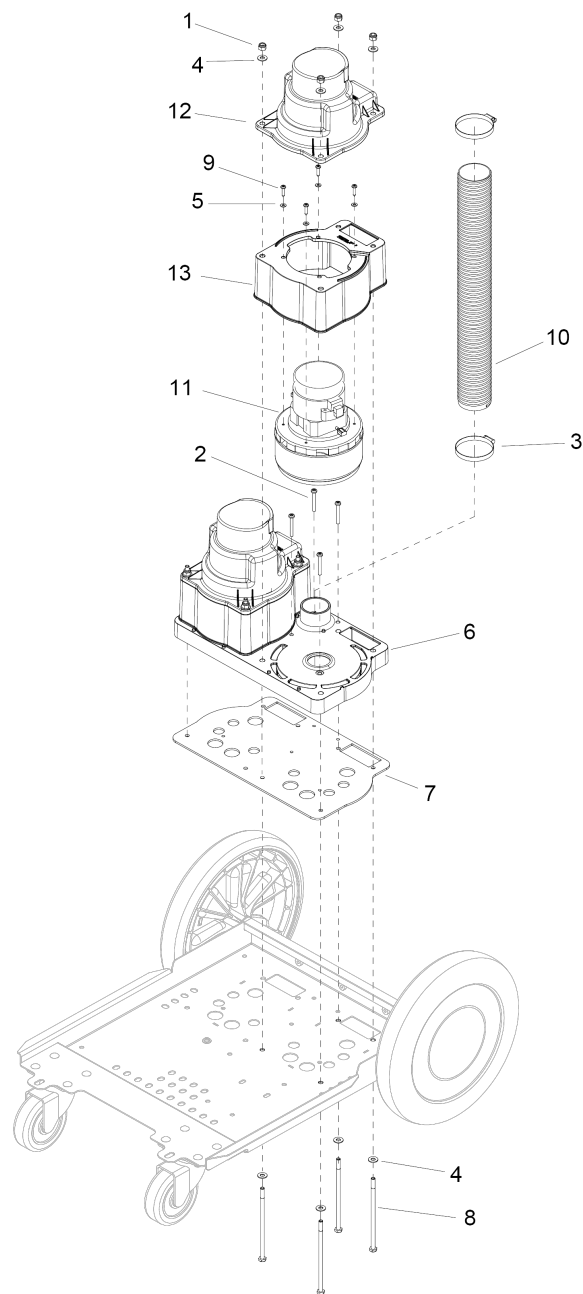
70 Recovery

POS	Article no.	Description	Quantity	Unit
1	8.616-146.0	Valve 1 1/2"	1	PC
2	8.633-449.0	Cover plate complete	1	PC
3	8.619-782.0	ELBOW, 1.5 FPT X FS PVC	1	PC
4	8.600-400.0	Seal tank flap	1	PC
5	8.619-704.0	NUT, 5/16-18 ACORN STL NKLPLT	2	PC
6	8.627-374.0	SCREW, 1/4-20 X 1.5 HHCS SS	2	PC
7	8.627-375.0	SCREW, 1/4-20 X .625 HHCS SS NP	4	PC
8	8.627-580.0	SCREW, 8-32 X .75 PHFLHMS	6	PC
9	8.601-063.0	WASHER, 1/4 SS	4	PC
10	8.601-067.0	WASHER, 5/16 FLT SS	6	PC
11	8.632-333.0	WASHER, 1/4 X 1 FNDR ZN BLK	2	PC
12	8.601-102.0	Wheel 3" DIA CUSHION RUBBER	2	PC
13	8.600-135.0	BUSHING, SPANNER .435 X 1.10	2	PC
14	8.631-151.0	ADAPTER, FLOAT 30 DEG, 2"	1	PC
15	8.634-347.0	Tank Recovery 13G AKW	1	PC
16	8.631-304.0	SCRN, FLOAT, SHTOFF, 2"	1	PC
17	8.631-671.0	BRKT, CORD, MOUNT	2	PC
18	8.631-723.0	HOSEBARB,1.5MPT X 1.5 W/FLANGE	1	PC
19	8.631-772.0	SCREW, 5/16-18 X 2.5 SCHBTNHCS SS	2	PC
20	8.632-079.0	PIPE ASM, 2", VACUUM	1	PC
21	6.491-816.0	Clamp	1	PC



80 Solution

POS	Article no.	Description	Quantity	Unit	Remark
1	8.617-364.0	ADPT,3/8 BLKH D	2	PC	COMPLETE
2	8.623-315.0	CLAMP, 3/8 HOSE (D-SLOT)	2	PC	
3	8.623-846.0	Hook	2	PC	
4	8.619-794.0	HOSEBARB, 3/8MPTX1/2 90D DL	1	PC	
5	8.600-155.0	Hose connection	1	PC	
6	8.627-374.0	SCREW, 1/4-20 X 1.5 HHCS SS	1	PC	
7	8.627-383.0	SCREW, 1/4-20 X .5 HHCS SS NP	11	PC	
8	8.627-187.0	NUT, 1/4-20 HEXTHIN NYLOCK SS	2	PC	
9	8.632-421.0	SCREW, 1/4-20 X .625 SCHBTNHCS BLKOX	4	PC	
10	8.627-616.0	SCREW, 10-32 X .625 PHPNHMS STL BLKOX	2	PC	
11	8.600-797.0	Strainer 3/8 IN. NPT 60 MESH	1	PC	
12	8.623-341.0	Clamp	2	PC	
13	8.601-067.0	WASHER, 5/16 FLT SS	2	PC	
14	8.601-063.0	WASHER, 1/4 SS	12	PC	
15	8.632-333.0	WASHER, 1/4 X 1 FNDR ZN BLK	2	PC	
16	8.631-199.0	HINGE, 9.5" LG X .074 THK	1	PC	
17	8.631-200.0	LID, SOLUTION, COVER	1	PC	
18	8.631-201.0	LID, SOLUTION, HINGE BRKT	1	PC	
19	8.631-235.0	TANK, SOL, TRIM	1	PC	
20	8.629-762.0	STRAP, HAND TOOL	2	PC	
21	8.631-756.0	SPACER, .50 ODX .25 ID X 1.0L	1	PC	
22	8.631-879.0	WASHER, 1.032 X 1.5 X .062 FLT SS	2	PC	
23	8.624-213.0	KNOB, HEX PRESS-LOC WING	2	PC	
24	8.632-403.0	PLATE, MOUNTING, SOLUTION	2	PC	



90 Vacuum, 2-Stage

POS	Article no.	Description	Quantity	Unit	Remark
1	8.627-187.0	NUT, 1/4-20 HEXTHIN NYLOCK SS	8	PC	
2	8.627-409.0	Screw , 10-32 X 1.5 PHHMS STL ZNPLT	5	PC	
3	8.623-343.0	Clamp worm gearing 2.50	2	PC	
4	8.601-063.0	WASHER, 1/4 SS	16	PC	
5	8.627-899.0	WASHER, 8 FLT	8	PC	
6	8.631-152.0	MANIFOLD, VACUUM, DUAL	1	PC	
7	8.631-299.0	GASKET, VAC MANIFOLD, DUAL	1	PC	
8	8.631-471.0	SCREW, 1/4-20 X 5.5 HHCS STL ZNPLT	8	PC	
9	8.631-763.0	SCREW, 8-15 X .75 PHPNHSMS ZN TYPEA	8	PC	
10	8.631-830.0	HOSE, VAC, 2.0 ID X 18.5" L	1	PC	
11	7.777-999.0	Stockpiling discontinued	2	PC	
11	8.631-876.0	VAC ASM, 2-STAGE, 120V	2	PC	
12	8.631-208.0	COVER, VAC MOTOR	2	PC	
13	8.631-222.0	BASE, VAC MOTOR, 2-STAGE	2	PC	
13	8.631-902.0	VAC HOUSING, 2 STAGE	2	PC	INCLUDES 12, 13