

## **Spare parts list**

(1.008-002.0) COMDU W/130 AH BATTS

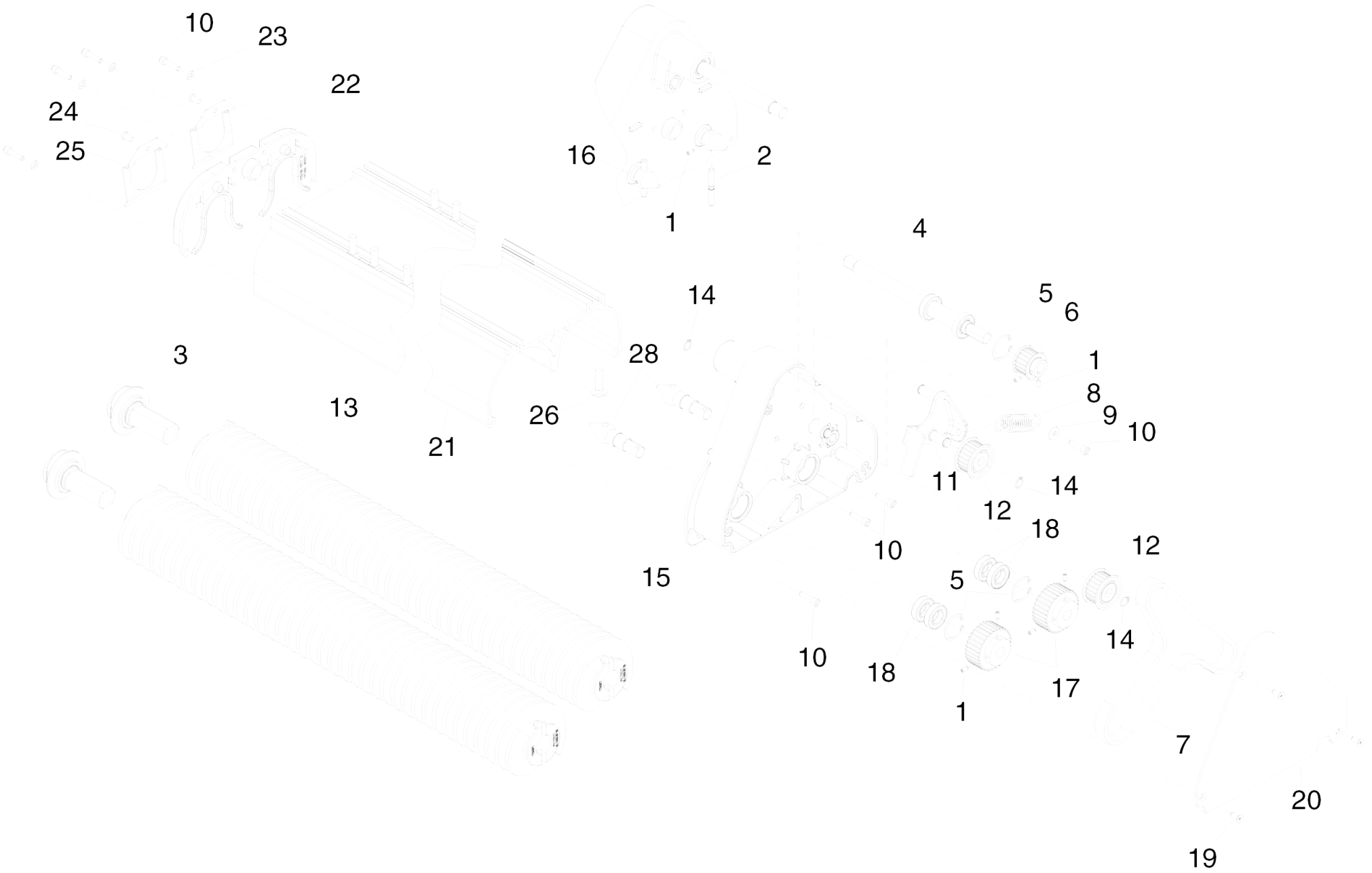
## Table of contents

---

|                                    |    |
|------------------------------------|----|
| COMDU W/130 AH BATTs (1.008-002.0) | 3  |
| 10 BRUSH DECK                      | 4  |
| 20 BRUSH DECK ACTUATOR             | 6  |
| 30 BRUSH DECK MOTOR                | 8  |
| 40 BRUSH DECK MOUNTING             | 10 |
| 50 BRUSH DECK SHROUD               | 12 |
| 60 BRUSH DECK LIFT                 | 14 |
| 70 CONTROL HANDLE                  | 16 |
| 80 CONTROL PANEL MOUNTING          | 18 |
| 90 CONTROL PANEL - LOWER           | 20 |
| 100 CONTROL PANEL - UPPER          | 22 |
| 110 COVER - FRONT                  | 24 |
| 120 LABELS                         | 26 |
| 130 FRAME - UPPER                  | 28 |
| 140 FRAME - LOWER                  | 30 |
| 150 RECOVERY TANK                  | 32 |
| 160 SOLUTION PUMP                  | 34 |
| 170 SOLUTION TANK                  | 37 |
| 180 SPRAY JET VALVES               | 39 |
| 190 SPRAY JETS                     | 41 |
| 200 WHEEL/DRIVE ASSEMBLY           | 43 |
| 210 VACUUM SHOE MOUNTING           | 45 |
| 220 VACUUM SHOE                    | 47 |
| 230 VACUUM                         | 49 |
| 240 BATTERY CART                   | 51 |
| 250 BATTERY CART - LATCH/LINKAGE   | 53 |
| 260 BATTERY CART TRAY              | 55 |
| 270 BATTERY EXCHANGE OPTION        | 57 |
| 280 EMERGENCY STOP OPTION          | 59 |
| 290 RECOVERY TANK HANDLE           | 61 |
| 300 HOSE DIAGRAM                   | 63 |
| 310 Wiring                         | 65 |
| 400 PKG SET, COMDU 3 X 130AH       | 69 |

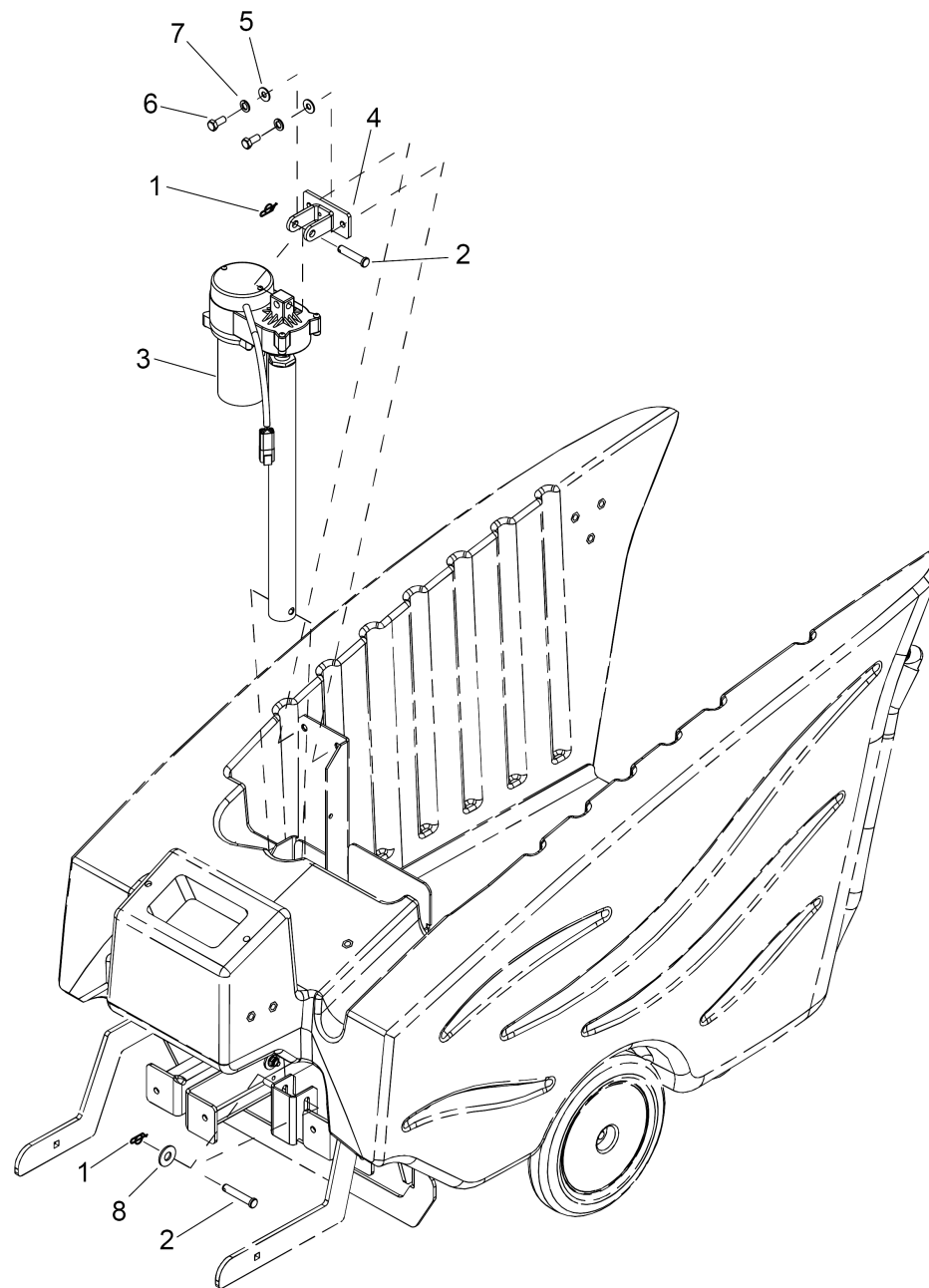
## COMDU W/130 AH BATTES (1.008-002.0)

| POS | Description                  | Quantity | Unit |
|-----|------------------------------|----------|------|
| 10  | BRUSH DECK                   | 1        | PC   |
| 20  | BRUSH DECK ACTUATOR          | 1        | PC   |
| 30  | BRUSH DECK MOTOR             | 1        | PC   |
| 40  | BRUSH DECK MOUNTING          | 1        | PC   |
| 50  | BRUSH DECK SHROUD            | 1        | PC   |
| 60  | BRUSH DECK LIFT              | 1        | PC   |
| 70  | CONTROL HANDLE               | 1        | PC   |
| 80  | CONTROL PANEL MOUNTING       | 1        | PC   |
| 90  | CONTROL PANEL - LOWER        | 1        | PC   |
| 100 | CONTROL PANEL - UPPER        | 1        | PC   |
| 110 | COVER - FRONT                | 1        | PC   |
| 120 | LABELS                       | 1        | PC   |
| 130 | FRAME - UPPER                | 1        | PC   |
| 140 | FRAME - LOWER                | 1        | PC   |
| 150 | RECOVERY TANK                | 1        | PC   |
| 160 | SOLUTION PUMP                | 1        | PC   |
| 170 | SOLUTION TANK                | 1        | PC   |
| 180 | SPRAY JET VALVES             | 1        | PC   |
| 190 | SPRAY JETS                   | 1        | PC   |
| 200 | WHEEL/DRIVE ASSEMBLY         | 1        | PC   |
| 210 | VACUUM SHOE MOUNTING         | 1        | PC   |
| 220 | VACUUM SHOE                  | 1        | PC   |
| 230 | VACUUM                       | 1        | PC   |
| 240 | BATTERY CART                 | 1        | PC   |
| 250 | BATTERY CART - LATCH/LINKAGE | 1        | PC   |
| 260 | BATTERY CART TRAY            | 1        | PC   |
| 270 | BATTERY EXCHANGE OPTION      | 1        | PC   |
| 280 | EMERGENCY STOP OPTION        | 1        | PC   |
| 290 | RECOVERY TANK HANDLE         | 1        | PC   |
| 300 | HOSE DIAGRAM                 | 1        | PC   |
| 310 | Wiring                       | 1        | PC   |
| 400 | PKG SET, COMDU 3 X 130AH     | 1        | PC   |



## 10 BRUSH DECK

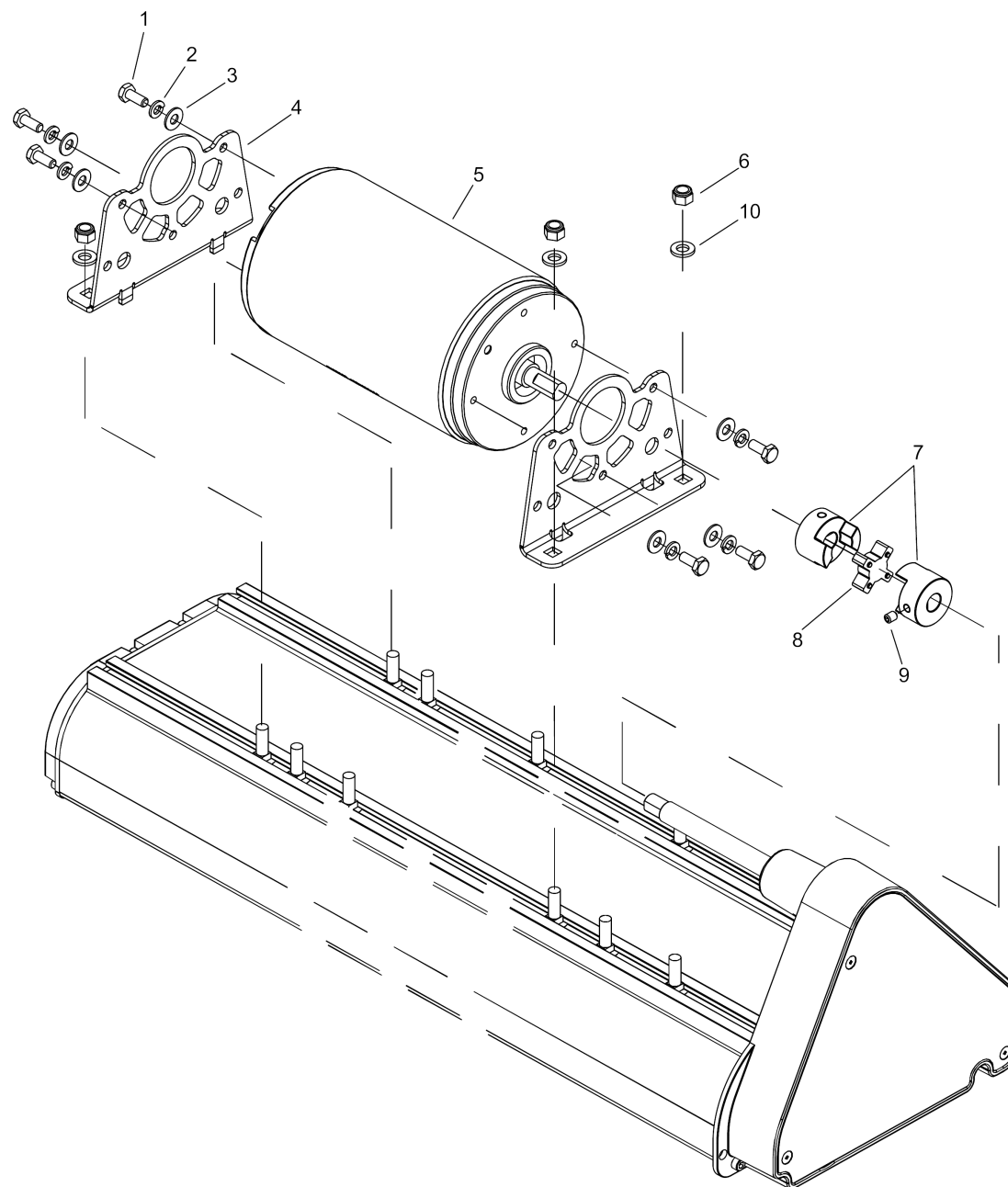
| POS | Article no. | Description                             | Quantity | Unit |
|-----|-------------|---|----------|------|
| 1   | 8.622-378.0 | Threaded pin M4X8                       | 8        | PC   |
| 2   | 8.622-417.0 | SHAFT, 6.2MM BRUSH DRIVE                | 2        | PC   |
| 3   | 8.637-307.0 | ASM, BRUSH END, NON-DRIVE               | 2        | PC   |
| 4   | 8.601-282.0 | SHAFT ASM, DRIVE 20"                    | 1        | PC   |
| 5   | 8.622-352.0 | RING, 28MM INT SNAP PHOSPHATE           | 3        | PC   |
| 6   | 8.622-331.0 | PULLEY, 5MM HTD, 18T, 12.7ID            | 1        | PC   |
| 7   | 8.621-525.0 | BELT, 2S 5MM HTD, DUO DRIVE             | 1        | PC   |
| 8   | 8.622-466.0 | Spring tension roller                   | 1        | PC   |
| 9   | 8.617-333.0 | WASHER, M5 SS ISO7093                   | 1        | PC   |
| 10  | 7.306-158.0 | Cylinder head screw M 5x20-A4-70 ISO 47 | 4        | PC   |
| 11  | 8.621-587.0 | Holder tension roller                   | 1        | PC   |
| 12  | 8.601-278.0 | Roller                                  | 2        | PC   |
| 13  | 8.623-068.0 | BRUSH, EXTRACTOR 20"                    | 2        | PC   |
| 14  | 8.622-349.0 | RING, 10MM EXT SNAP, DIN 471            | 3        | PC   |
| 15  | 8.642-776.0 | HOUSING ASM, BRUSH DRIVE, SEAL          | 1        | PC   |
| 16  | 8.642-701.0 | SEAL, OIL, 16 X 26 X 5 TC               | 1        | PC   |
| 17  | 8.622-332.0 | PULLEY, 32T, 5MM HTD                    | 2        | PC   |
| 18  | 8.622-896.0 | BEARING, 15 X 28 X 7W SS BALL           | 2        | PC   |
| 19  | 8.617-297.0 | SCREW, M5 X 12 PHFLHMS SS ISO7046       | 4        | PC   |
| 20  | 8.622-287.0 | PLATE, BRUSH DRIVE COVER                | 1        | PC   |
| 21  | 8.621-779.0 | EXTRUSION, DUAL BRUSH 20"               | 1        | PC   |
| 22  | 8.621-939.0 | Housing brushes retainer                | 1        | PC   |
| 23  | 8.617-335.0 | WASHER, M5 FLT SS ISO7089               | 4        | PC   |
| 24  | 8.617-298.0 | SCREW, KA50 X 10 OVHCS STL WN1412 ZNPLT | 2        | PC   |
| 25  | 8.622-463.0 | SPRING, BRUSH CLIP                      | 2        | PC   |
| 26  | 8.627-713.0 | SCREW, 5/16-18 X 1 CARR SS              | 10       | PC   |
| 27  | 8.635-049.0 | PLUG, HOLE, 5MM DIA X 12MM L            | 3        | PC   |
| 28  | 8.638-665.0 | SHAFT, BRUSH DRIVE, SEAL                | 2        | PC   |



## 20 BRUSH DECK ACTUATOR

---

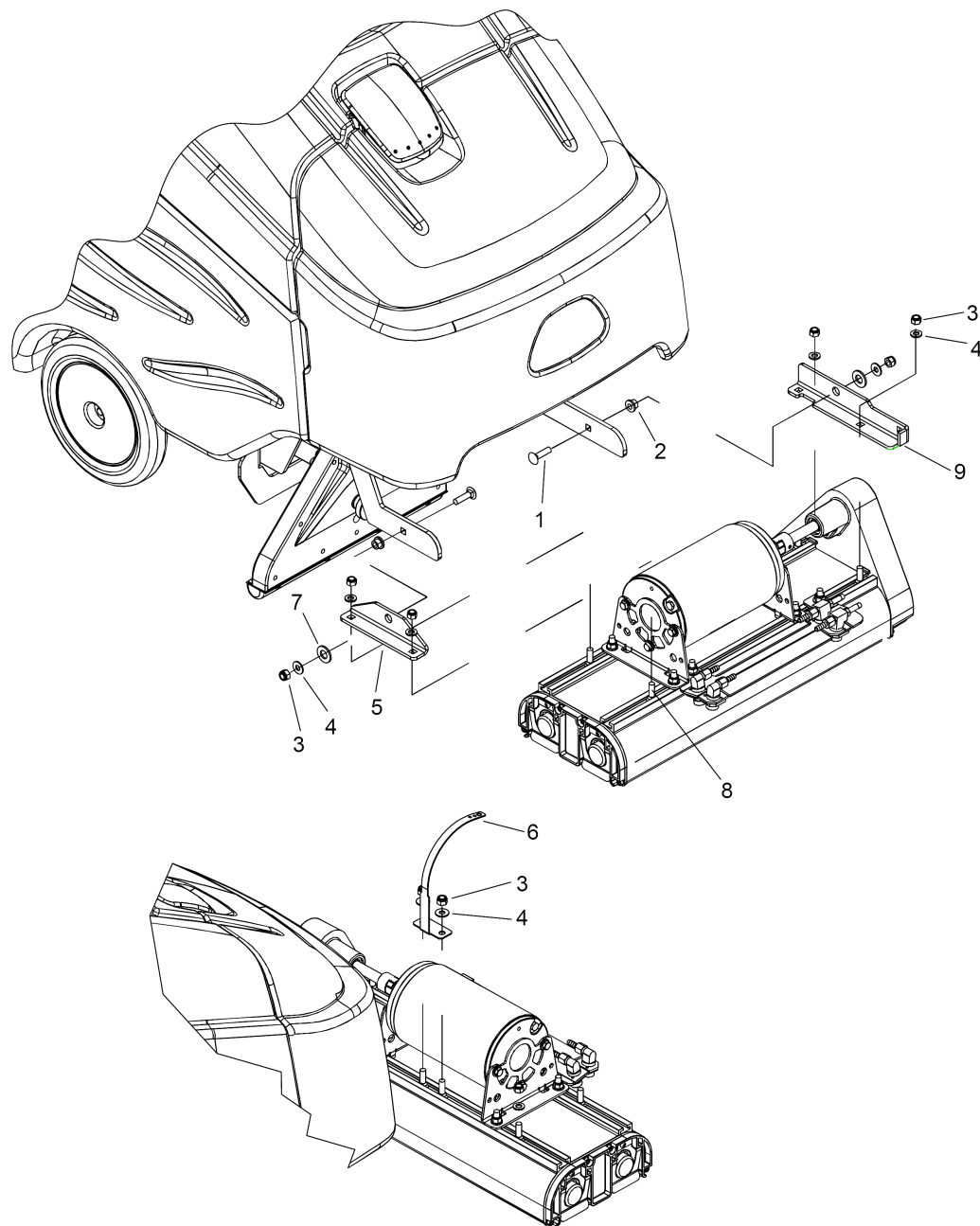
| <b>POS</b> | <b>Article no.</b> | <b>Description</b>            | <b>Quantity</b> | <b>Unit</b> |
|------------|--------------------|-------------------------------|-----------------|-------------|
| 1          | 8.600-866.0        | Cotter 5/16" RING             | 2               | PC          |
| 2          | 8.624-897.0        | PIN, CLEVIS 3/8 X 2 STL ZNPLT | 2               | PC          |
| 3          | 8.601-180.0        | ACTUATOR, 36 VDC 2.75 STROKE  | 1               | PC          |
| 4          | 8.609-193.0        | BRKT, ACTUATOR MOUNT          | 1               | PC          |
| 5          | 8.601-067.0        | WASHER, 5/16 FLT SS           | 2               | PC          |
| 6          | 8.627-678.0        | SCREW, 5/16-18 X .75 HHCS SS  | 2               | PC          |
| 7          | 8.627-913.0        | Washer 5/16 SPLIT LOCK PLTD   | 2               | PC          |
| 8          | 8.627-891.0        | WASHER, 3/8 SS                | 1               | PC          |





### 30 BRUSH DECK MOTOR

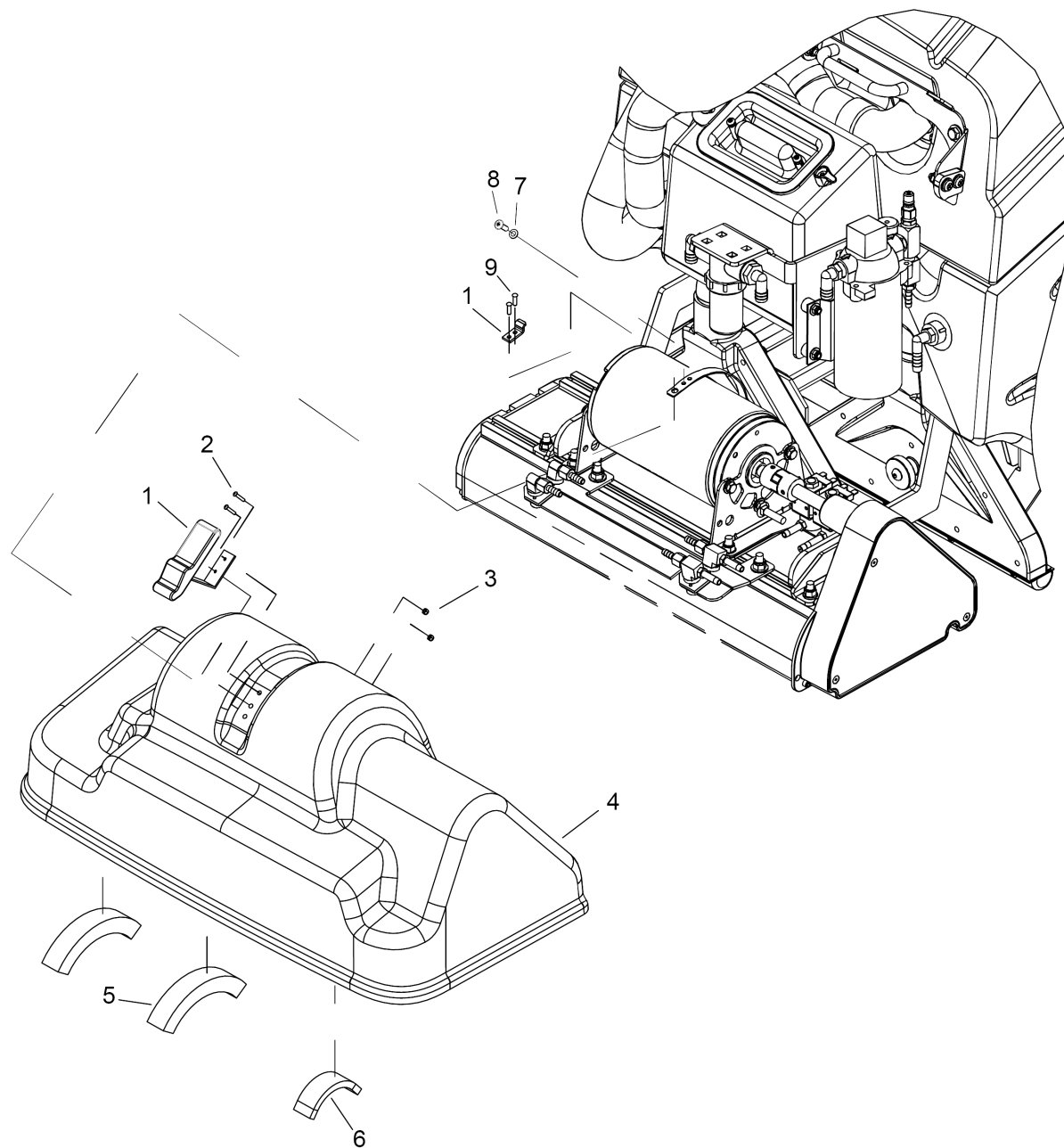
| POS | Article no. | Description                     | Quantity | Unit | Remark               |
|-----|-------------|---------------------------------|----------|------|----------------------|
| 1   | 8.627-375.0 | SCREW, 1/4-20 X .625 HHCS SS NP | 6        | PC   |                      |
| 2   | 8.617-334.0 | WASHER, 1/4 SPL SS              | 6        | PC   |                      |
| 3   | 8.601-063.0 | WASHER, 1/4 SS                  | 6        | PC   |                      |
| 4   | 8.621-588.0 | Holder motor bearing            | 2        | PC   |                      |
| 5   | 8.600-136.0 | BRUSH SET, CCL MOTORS (4)       | 1        | PC   |                      |
| 5   | 8.622-213.0 | MOTOR, 36VDC                    | 1        | PC   |                      |
| 6   | 8.622-229.0 | NUT, 5/16-18 HEXNYLOCK SS       | 4        | PC   |                      |
| 7   | 8.635-477.0 | KIT, COUPLER, 35MM              | 2        | PC   | Includes 8.617-296.0 |
| 8   | 8.635-477.0 | KIT, COUPLER, 35MM              | 1        | PC   |                      |
| 9   | 8.617-296.0 | SCREW, M6 X 8 SCHSET SS ISO4029 | 2        | PC   |                      |
| 10  | 8.622-579.0 | WASHER, 5/16 SS                 | 4        | PC   |                      |



## 40 BRUSH DECK MOUNTING

---

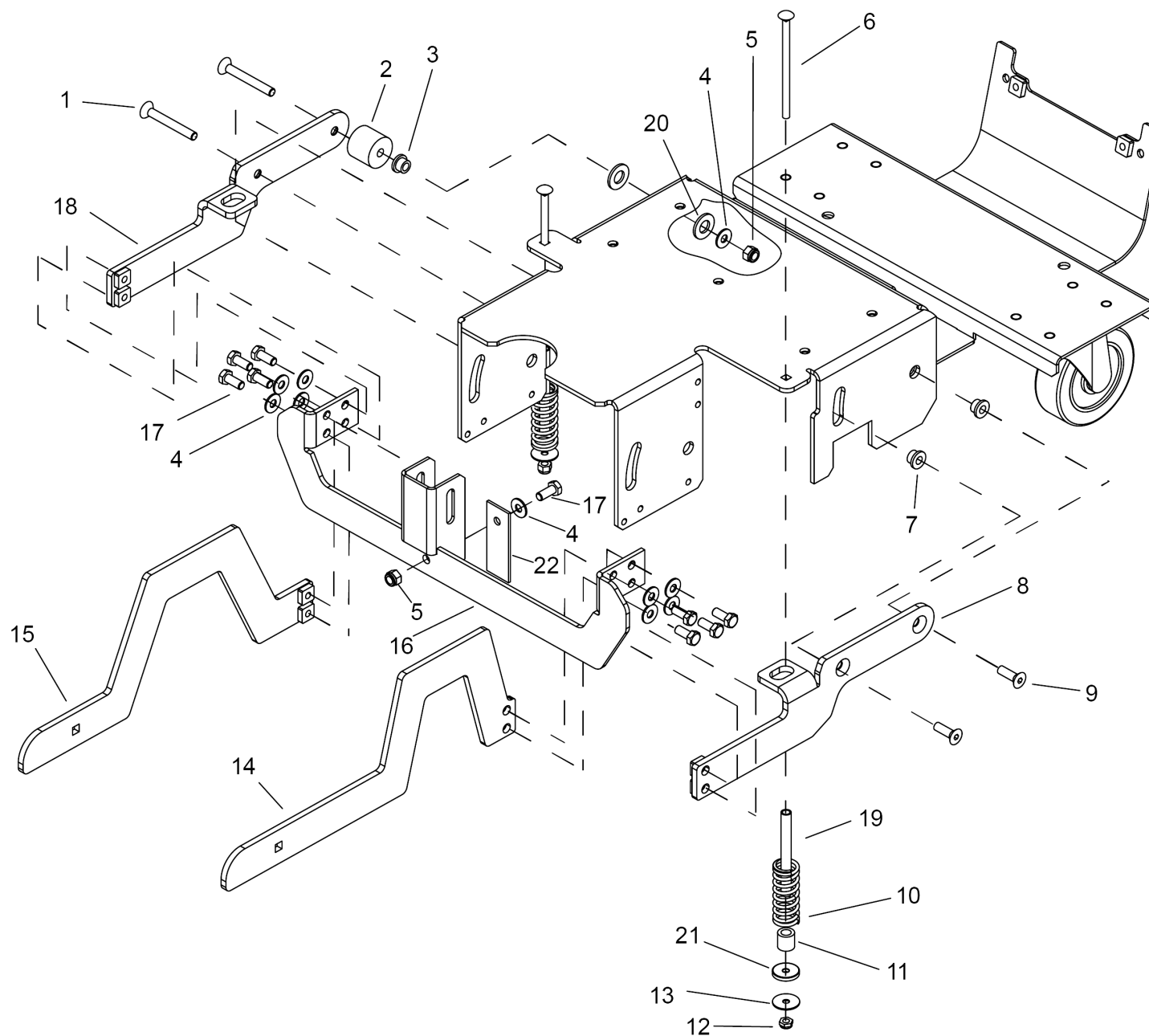
| POS | Article no. | Description                         | Quantity | Unit |
|-----|-------------|-------------------------------------|----------|------|
| 1   | 8.627-703.0 | SCREW, 5/16-18 X 1.25 CARR SS       | 2        | PC   |
| 2   | 8.622-899.0 | BUSHING, .314 X .502 X .375 FLG BRZ | 2        | PC   |
| 3   | 8.627-083.0 | NUT, 5/16-18 HEX NYLOCK SS          | 8        | PC   |
| 4   | 8.601-067.0 | WASHER, 5/16 FLT SS                 | 8        | PC   |
| 5   | 8.607-180.0 | Holder brush-head                   | 1        | PC   |
| 6   | 8.608-811.0 | Strap                               | 1        | PC   |
| 7   | 8.625-942.0 | WASHER, .510 X 1 THR                | 2        | PC   |
| 8   | 8.627-713.0 | SCREW, 5/16-18 X 1 CARR SS          | 2        | PC   |
| 9   | 8.629-618.0 | BRKT, BRUSH DECK PIVOT, LEFT        | 1        | PC   |



## 50 BRUSH DECK SHROUD

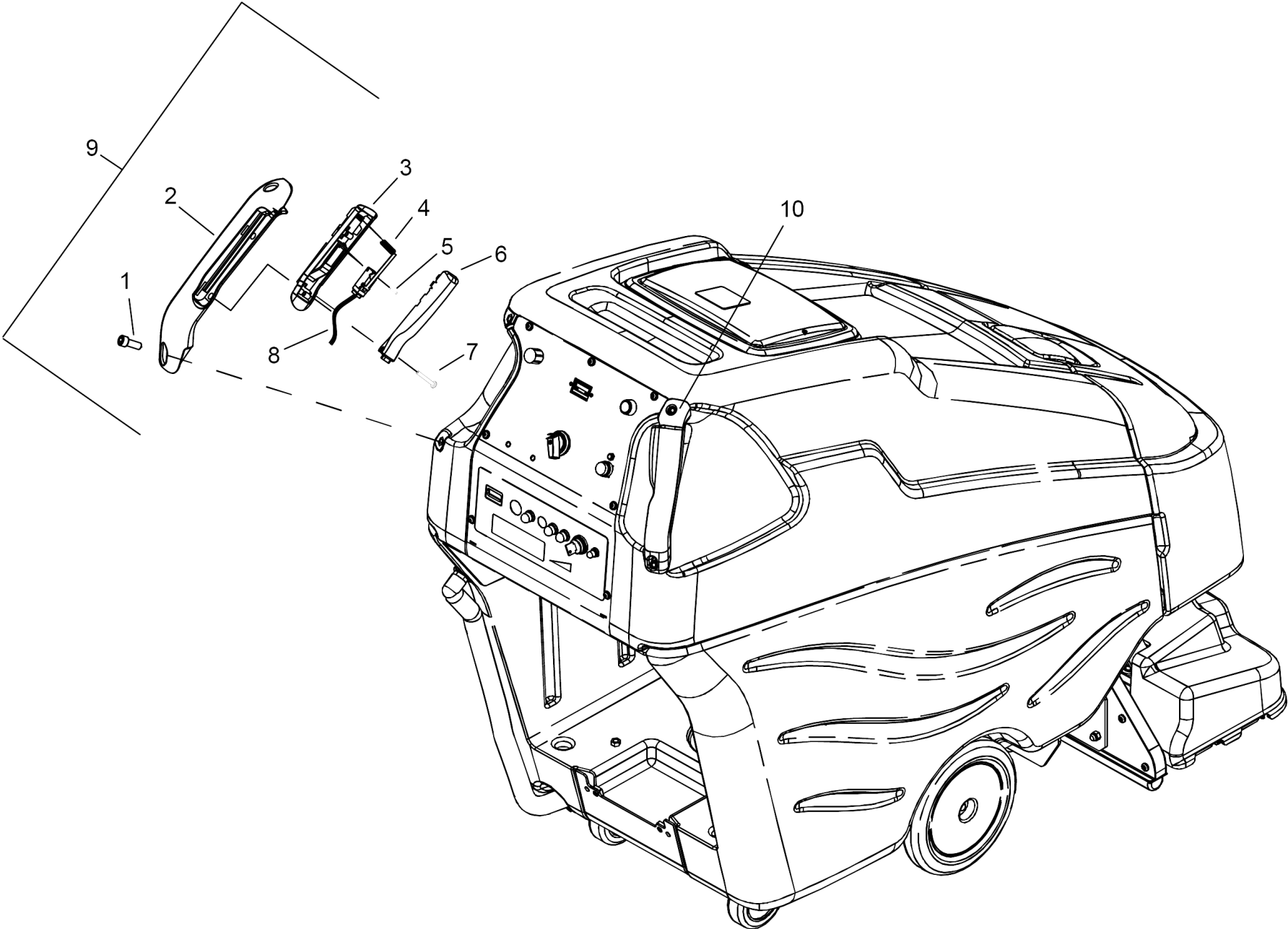
---

| POS | Article no. | Description                         | Quantity | Unit |
|-----|-------------|-------------------------------------|----------|------|
| 1   | 8.616-180.0 | Snap fastener                       | 1        | PC   |
| 2   | 8.627-395.0 | SCREW, 6-32 X .5 PHPNHMS SS         | 2        | PC   |
| 3   | 8.627-092.0 | NUT, 6-32 HEX NYLOCK SS             | 2        | PC   |
| 4   | 8.606-232.0 | COVER, DECK                         | 1        | PC   |
| 5   | 8.601-219.0 | FOAM SPACER, SHROUD, 3/4 T          | 2        | PC   |
| 6   | 8.601-220.0 | FOAM SPACER, SHROUD, 5/16 T         | 1        | PC   |
| 7   | 8.627-919.0 | WASHER, 10 FLT STL ZNPLT            | 1        | PC   |
| 8   | 8.627-452.0 | SCREW, 10 X .375 PHPNH HL STL ZNPLT | 1        | PC   |
| 9   | 8.600-640.0 | RIVET, 5/32 X .062-.125GL POP AL    | 2        | PC   |



## 60 BRUSH DECK LIFT

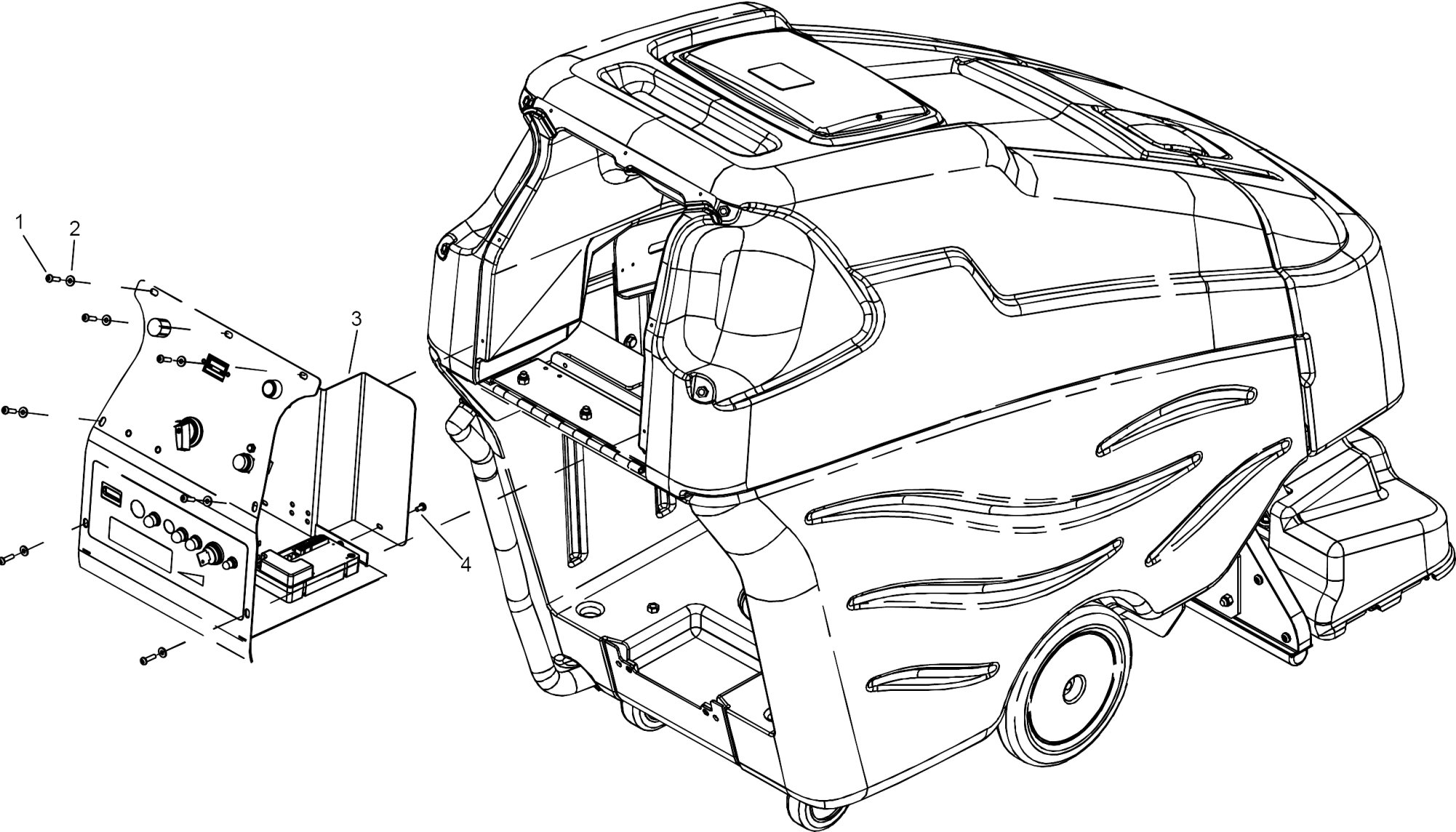
| POS | Article no. | Description                         | Quantity | Unit |
|-----|-------------|-------------------------------------|----------|------|
| 1   | 8.627-675.0 | SCREW, 5/16-18 X 2.5 SCHFLHCS SS    | 2        | PC   |
| 2   | 8.629-885.0 | SPACER, .74ODX.39IDX1.0L NYL        | 2        | PC   |
| 3   | 8.622-900.0 | BUSHING, .377 X .502 X .5 FLG       | 2        | PC   |
| 4   | 8.601-067.0 | WASHER, 5/16 FLT SS                 | 13       | PC   |
| 5   | 8.627-083.0 | NUT, 5/16-18 HEX NYLOCK SS          | 5        | PC   |
| 6   | 8.601-290.0 | SCREW, 1/4-20 X 4.5 CARR SS         | 2        | PC   |
| 7   | 8.622-899.0 | BUSHING, .314 X .502 X .375 FLG BRZ | 2        | PC   |
| 8   | 8.629-777.0 | LIFT ARM LEFT, REAR                 | 1        | PC   |
| 9   | 8.629-070.0 | SCREW, 5/16-18 X 1 SCHFLHCS SS      | 2        | PC   |
| 10  | 8.601-301.0 | SPRING, COMP .97DX 2.5LX .12W       | 2        | PC   |
| 11  | 8.638-955.0 | BUSHING, 10 X 16 X 16MM BRZ         | 2        | PC   |
| 12  | 8.627-187.0 | NUT, 1/4-20 HEXTHIN NYLOCK SS       | 2        | PC   |
| 13  | 8.601-081.0 | WASHER, 1/4 FNDR SS                 | 8        | PC   |
| 14  | 8.629-779.0 | LIFT ARM LEFT, FRONT                | 1        | PC   |
| 15  | 8.629-778.0 | LIFT ARM RIGHT, FRONT               | 1        | PC   |
| 16  | 8.629-780.0 | BRKT, ACTUATOR LIFT                 | 1        | PC   |
| 17  | 8.627-678.0 | SCREW, 5/16-18 X .75 HHCS SS        | 9        | PC   |
| 18  | 8.629-776.0 | LIFT ARM RIGHT, REAR                | 1        | PC   |
| 19  | 8.608-842.0 | Holder-up                           | 2        | PC   |
| 20  | 8.625-942.0 | WASHER, .510 X 1 THR                | 6        | PC   |
| 21  | 8.625-940.0 | WASHER, .51 THR                     | 1        | PC   |
| 22  | 8.625-613.0 | STRAP, STATIC, .2T X 1W X 3L        | 1        | PC   |





## 70 CONTROL HANDLE

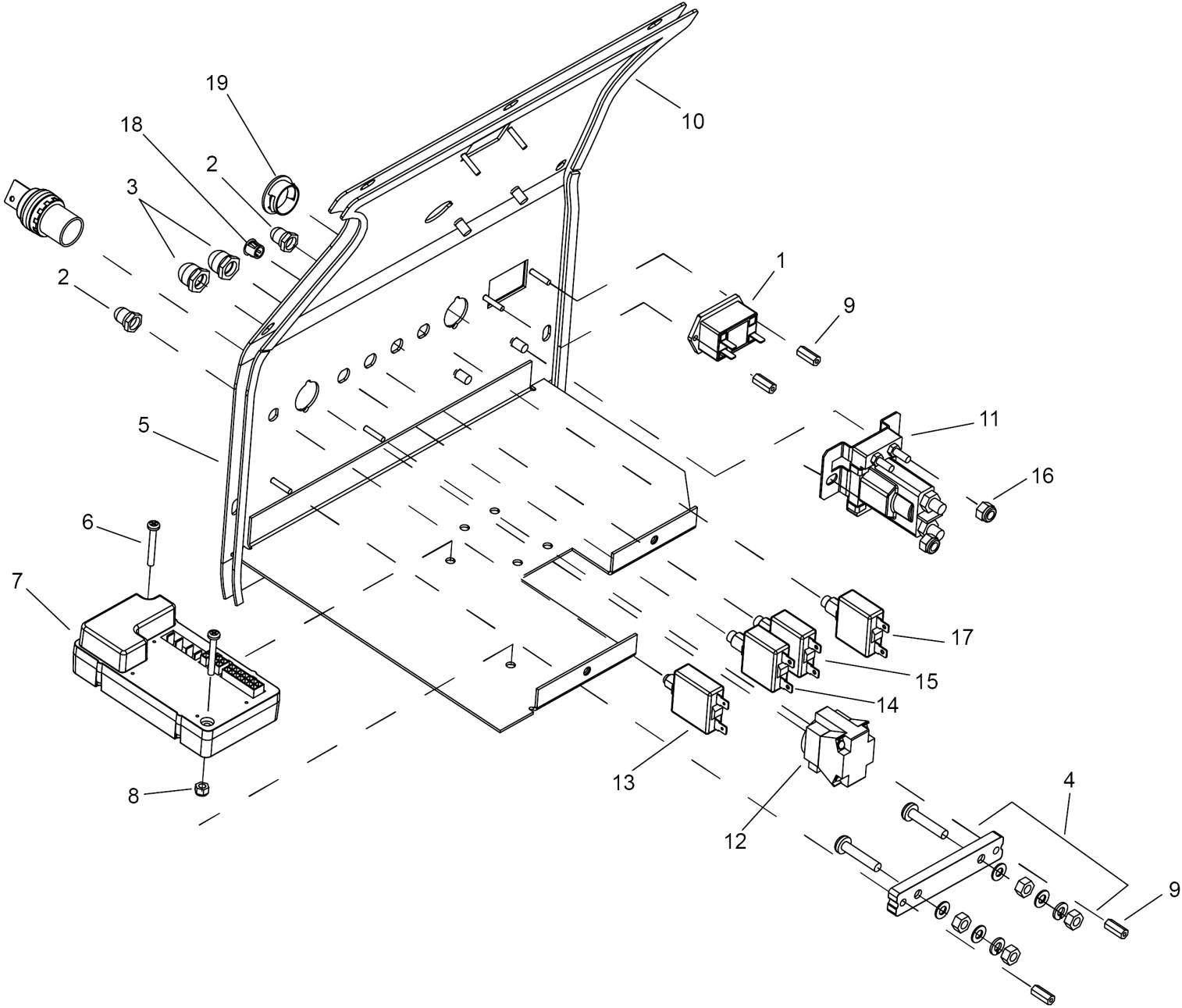
| POS | Article no. | Description                          | Quantity | Unit | Remark            |
|-----|-------------|--------------------------------------|----------|------|-------------------|
| 1   | 8.627-705.0 | SCREW, 5/16-18 X .75 SCHCS SS        | 4        | PC   |                   |
| 2   | 8.600-412.0 | Hand grip complete left              | 1        | PC   |                   |
| 2   | 8.600-413.0 | Hand grip complete right             | 1        | PC   |                   |
| 3   | 8.624-099.0 | HOUSING, BUTTON                      | 2        | PC   |                   |
| 4   | 8.625-492.0 | SPRING, COMP .24ODX1.25X.018         | 2        | PC   |                   |
| 5   | 8.627-707.0 | SCREW, 4-40 X .625 PHPNHMS STL ZNPLT | 2        | PC   |                   |
| 6   | 8.633-819.0 | BUTTON PROPEL, YLW                   | 2        | PC   |                   |
| 7   | 8.627-706.0 | SCREW, 8-32 X .875 PHPNHTC           | 4        | PC   |                   |
| 8   | 8.625-723.0 | Switch SPST MOM NO W/LEVER           | 2        | PC   |                   |
| 9   | 8.633-886.0 | PROPEL HANDLE ASM, LEFT, YLW         | 1        | PC   | Complete Assembly |
| 10  | 8.633-887.0 | PROPEL HANDLE ASM, RT, YLW           | 1        | PC   | Complete Assembly |



## 80 CONTROL PANEL MOUNTING

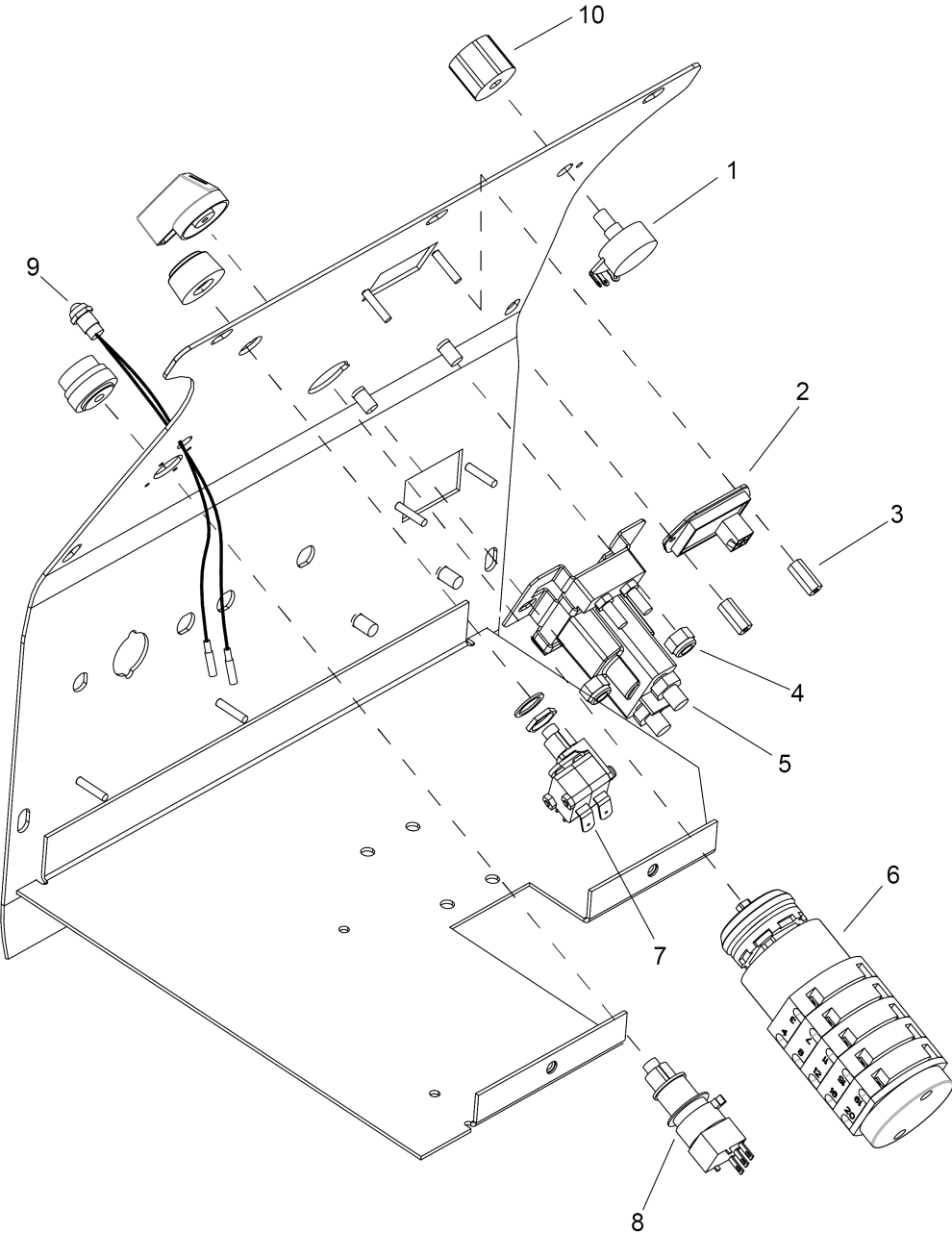
---

| <b>POS</b> | <b>Article no.</b> | <b>Description</b>                      | <b>Quantity</b> | <b>Unit</b> |
|------------|--------------------|---|-----------------|-------------|
| 1          | 8.627-629.0        | SCREW, 10 X .75 PPNHMS HI LOW ST BLK ZN | 7               | PC          |
| 2          | 8.629-425.0        | WASHER, .19 X .5 X .09 BLK              | 7               | PC          |
| 3          | 8.607-211.0        | BRKT, BACK, CONTROL PANEL               | 1               | PC          |
| 4          | 8.627-429.0        | SCREW, 10-32 X .375 PHPNHMS SS          | 2               | PC          |



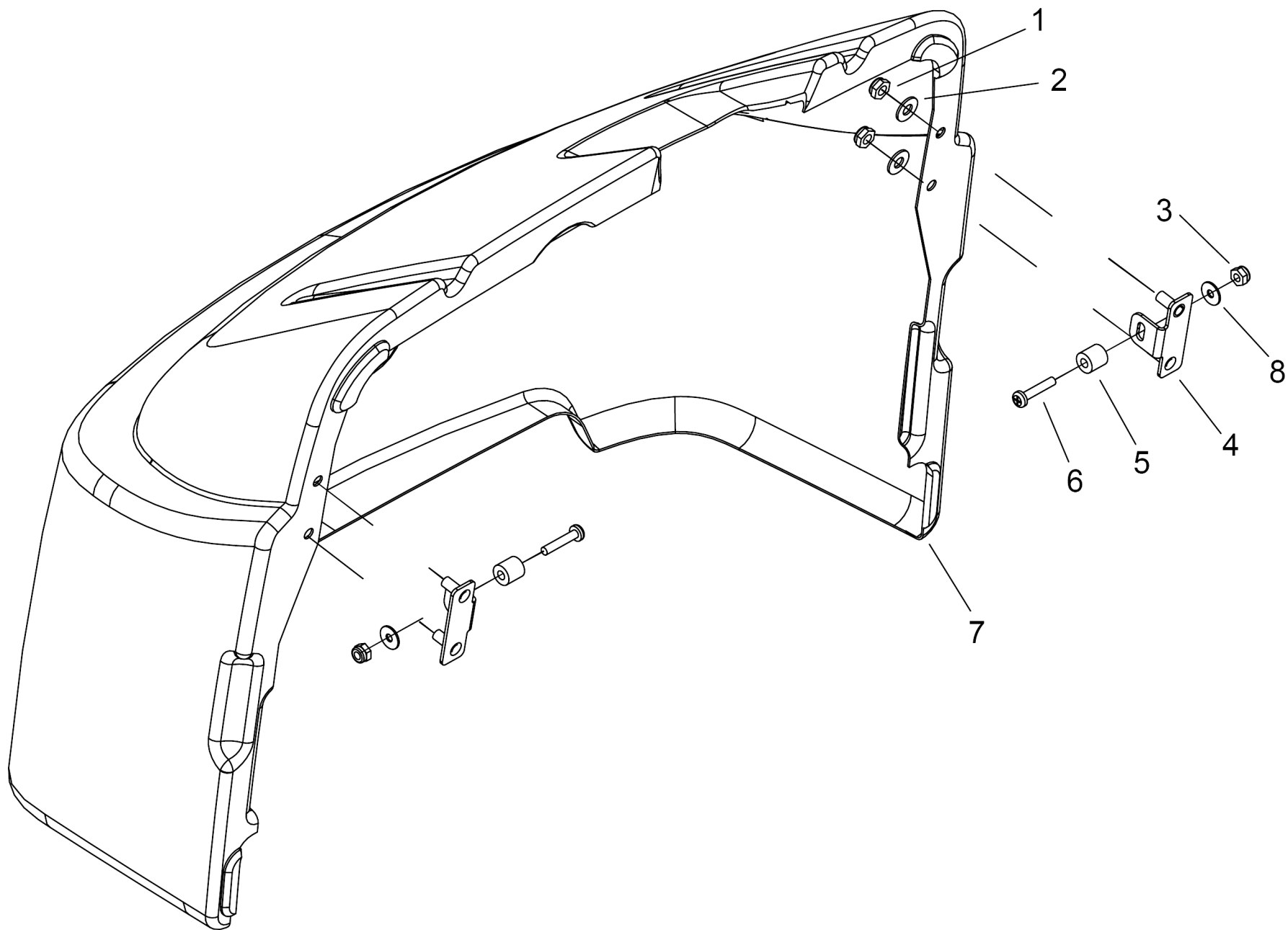
90 CONTROL PANEL - LOWER

| POS | Article no. | Description                            | Quantity | Unit |
|-----|-------------|--|----------|------|
| 1   | 8.600-553.0 | METER, 12-48 VDC LED HOUR              | 1        | PC   |
| 2   | 8.600-201.0 | BOOT, 3/8 CIRCUIT BREAKER              | 2        | PC   |
| 3   | 8.600-890.0 | Protecting cap motor protecting switch | 2        | PC   |
| 4   | 8.622-977.0 | BLOCK, SHUNT MOUNT                     | 1        | PC   |
| 5   | 8.629-557.0 | PANEL, CONTROL                         | 1        | PC   |
| 6   | 8.627-388.0 | SCREW, 8-32 X 1.25 PHPNHMS             | 2        | PC   |
| 7   | 8.630-632.0 | CONTROLLER, I-DRIVE, GEL BATT          | 1        | PC   |
| 8   | 8.627-085.0 | Lock nut                               | 2        | PC   |
| 9   | 8.625-590.0 | Distance pin                           | 4        | PC   |
| 10  | 8.623-790.0 | GASKET, .125T X .37W X 23L             | 2        | PC   |
| 11  | 8.625-136.0 | Relay 36VDC 100A                       | 1        | PC   |
| 12  | 8.600-486.0 | Ignition key                           | 1        | PC   |
| 12  | 8.600-719.0 | Ignition lock                          | 1        | PC   |
| 13  | 8.600-200.0 | BREAKER, 3 AMP 1681-090-300            | 1        | PC   |
| 14  | 8.600-192.0 | BREAKER, 25A 50VDC CIRCUIT             | 1        | PC   |
| 15  | 8.600-191.0 | BREAKER, 30A 50VDC CIRCUIT             | 1        | PC   |
| 16  | 8.627-187.0 | NUT, 1/4-20 HEXTHIN NYLOCK SS          | 2        | PC   |
| 17  | 8.623-008.0 | BREAKER, 22A 250VAC, 50VDC             | 1        | PC   |
| 18  | 8.625-021.0 | PLUG, DOME, .375                       | 1        | PC   |
| 19  | 8.625-016.0 | PLUG, .875 HOLE                        | 1        | PC   |



100 CONTROL PANEL - UPPER

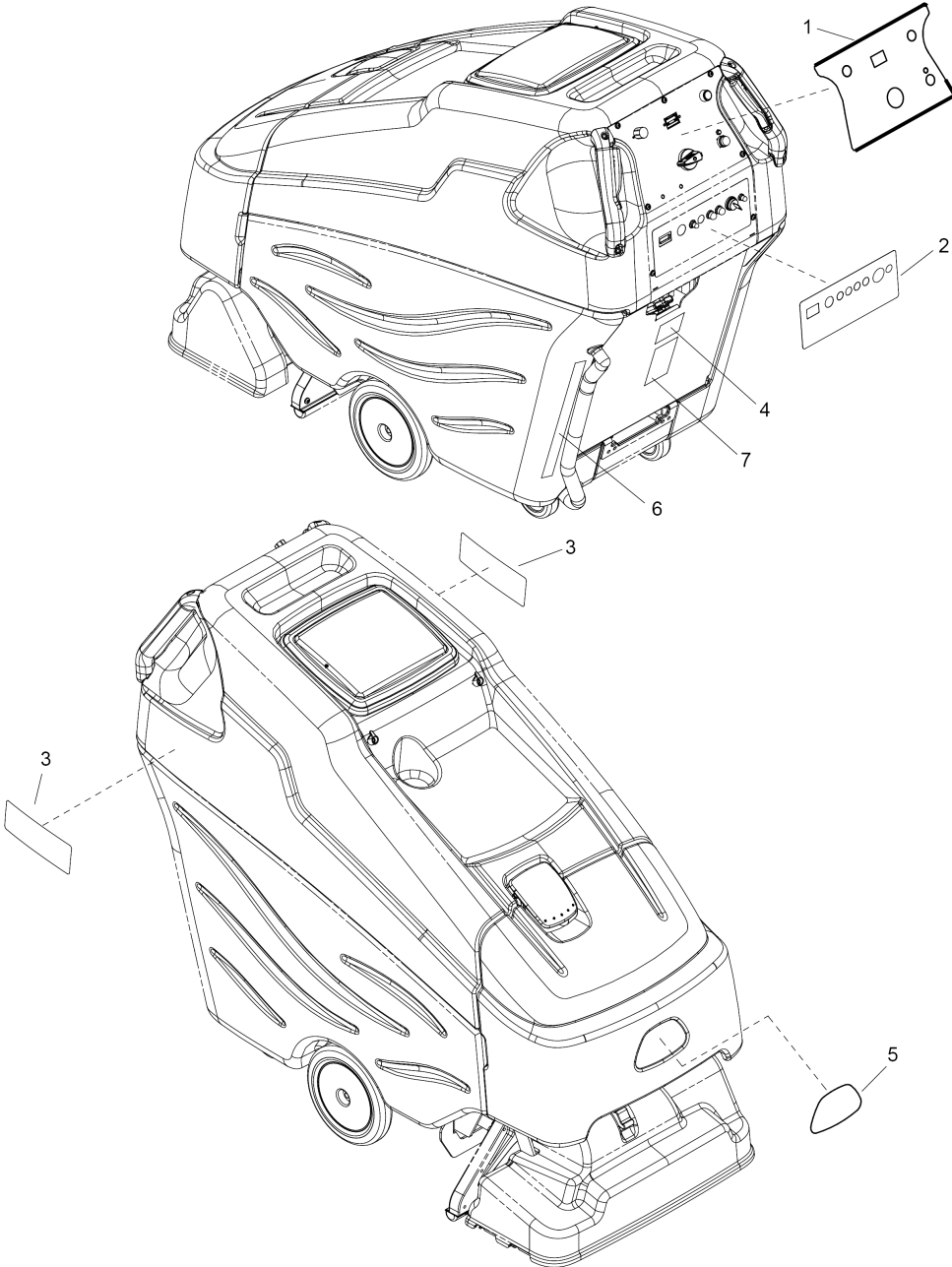
| POS | Article no. | Description                    | Quantity | Unit |
|-----|-------------|--------------------------------|----------|------|
| 1   | 8.600-623.0 | POTENTIOMETER, 5K OHMS         | 1        | PC   |
| 2   | 8.601-267.0 | METER, BATTERY, PG TRUE CHARGE | 1        | PC   |
| 3   | 8.625-590.0 | Distance pin                   | 6        | PC   |
| 4   | 8.627-187.0 | NUT, 1/4-20 HEXTHIN NYLOCK SS  | 4        | PC   |
| 5   | 8.625-136.0 | Relay 36VDC 100A               | 2        | PC   |
| 6   | 8.601-469.0 | SWITCH, ROTARY CAM, 4 POS      | 1        | PC   |
| 7   | 8.625-718.0 | Switch                         | 1        | PC   |
| 8   | 8.625-715.0 | Switch                         | 1        | PC   |
| 9   | 8.602-601.0 | Control lamp                   | 1        | PC   |
| 10  | 8.624-211.0 | Turning knob                   | 1        | PC   |
| 11  | 8.625-141.0 | Relay 15A 36V MINI             | 1        | PC   |
| 12  | 8.630-014.0 | ASSY, DC CONVERTER             | 1        | PC   |
| 13  | 8.625-464.0 | SPACER, .25 OD X .171 ID X .25 | 2        | PC   |





110 COVER - FRONT

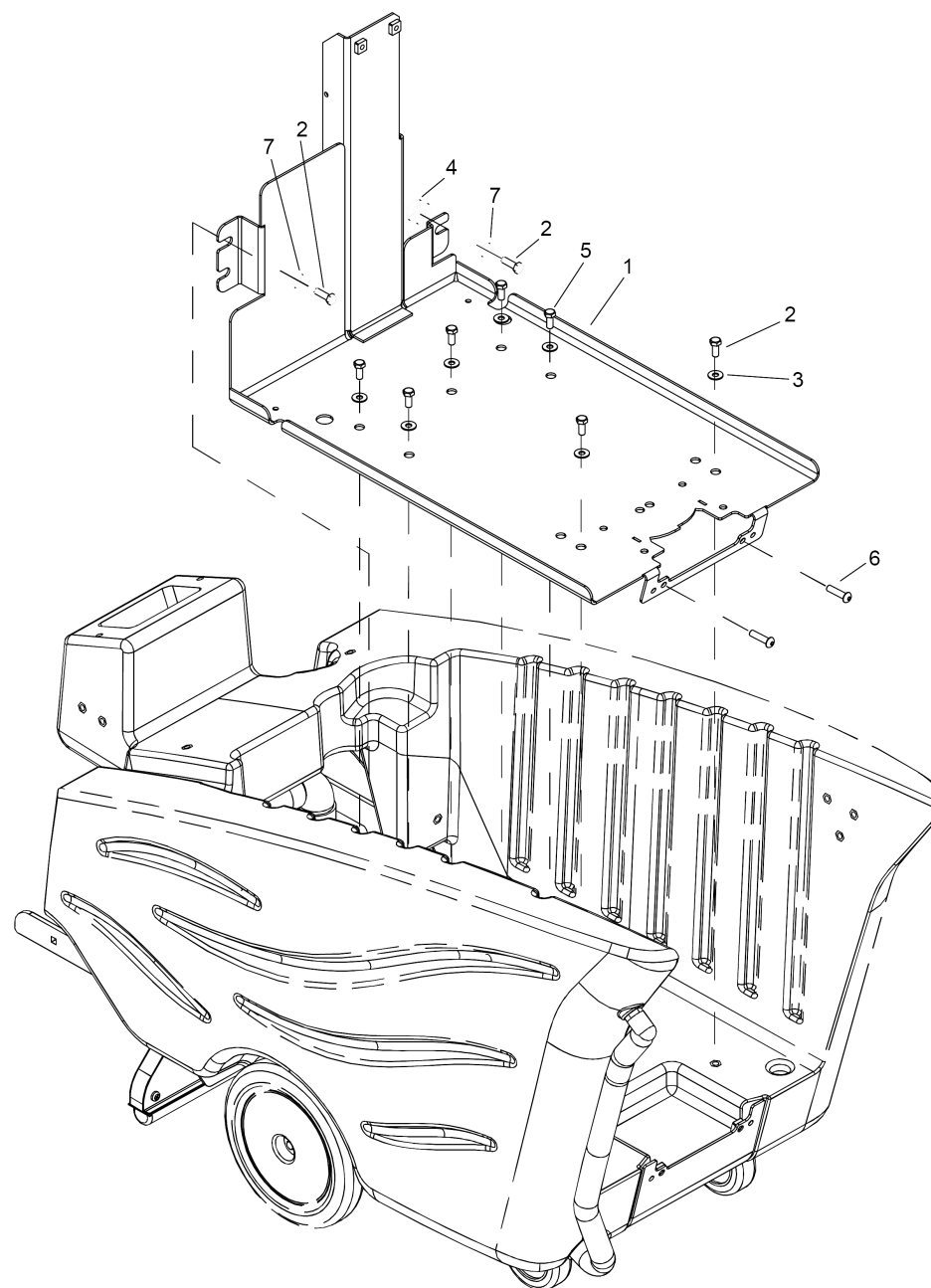
| POS | Article no. | Description                          | Quantity | Unit |
|-----|-------------|--------------------------------------|----------|------|
| 1   | 8.627-187.0 | NUT, 1/4-20 HEXTHIN NYLOCK SS        | 4        | PC   |
| 2   | 8.601-063.0 | WASHER, 1/4 SS                       | 4        | PC   |
| 3   | 8.627-099.0 | NUT, 10-32 HEX NYLOCK SS             | 2        | PC   |
| 4   | 8.629-074.0 | BRKT, FRONT LATCH                    | 2        | PC   |
| 5   | 8.627-839.0 | SPACER, 1/2"ODX.219IDX1/2"NYLO BLACK | 2        | PC   |
| 6   | 8.600-683.0 | SCREW, 10-32 X 1 PHPNHMS STL ZNPLT   | 2        | PC   |
| 7   |             | COVER, FRT BLK DUO MCHND             | 1        | PC   |
| 8   | 8.601-065.0 | WASHER, .203 X .562 X .040 FLT       | 2        | PC   |



## 120 LABELS

---

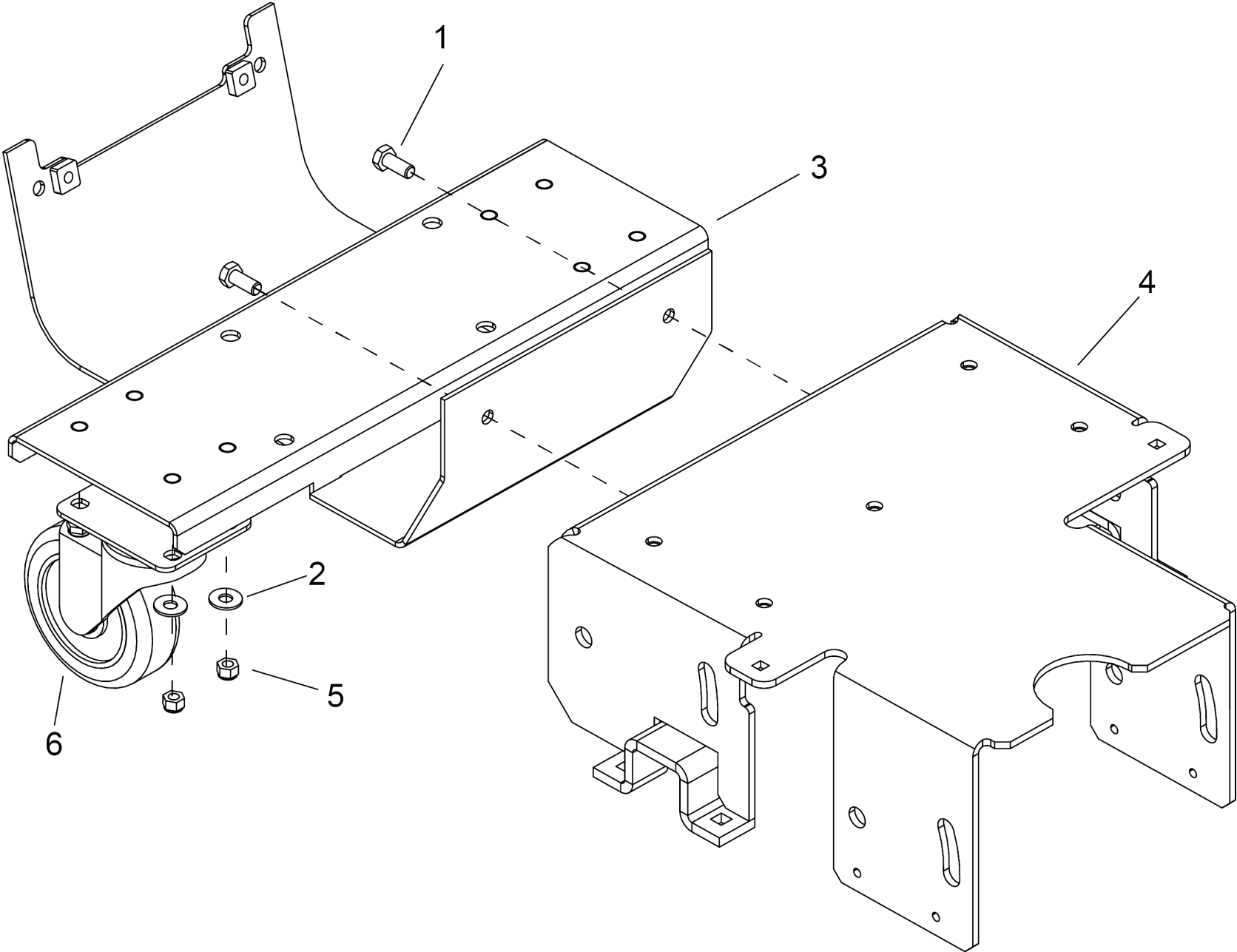
| <b>POS</b> | <b>Article no.</b> | <b>Description</b>          | <b>Quantity</b> | <b>Unit</b> |
|------------|--------------------|-----------------------------|-----------------|-------------|
| 1          | 8.639-592.0        | LABEL, BASIC CONTROL        | 1               | PC          |
| 2          | 8.639-932.0        | LABEL, EXTRACTORS, BREAKERS | 1               | PC          |
| 3          | 8.640-260.0        | LABEL, COMMODORE SIDE       | 2               | PC          |
| 4          | 8.601-433.0        | LABEL, CHARGER CONNECTION   | 1               | PC          |
| 5          | 8.639-540.0        | LABEL, WINDSOR LOGO DOMED   | 1               | PC          |
| 6          | 8.639-942.0        | LABEL, SOL FILL, 20 GAL     | 1               | PC          |
| 7          | 8.643-147.0        | Label QR code Commodore Duo | 1               | PC          |



## 130 FRAME - UPPER

---

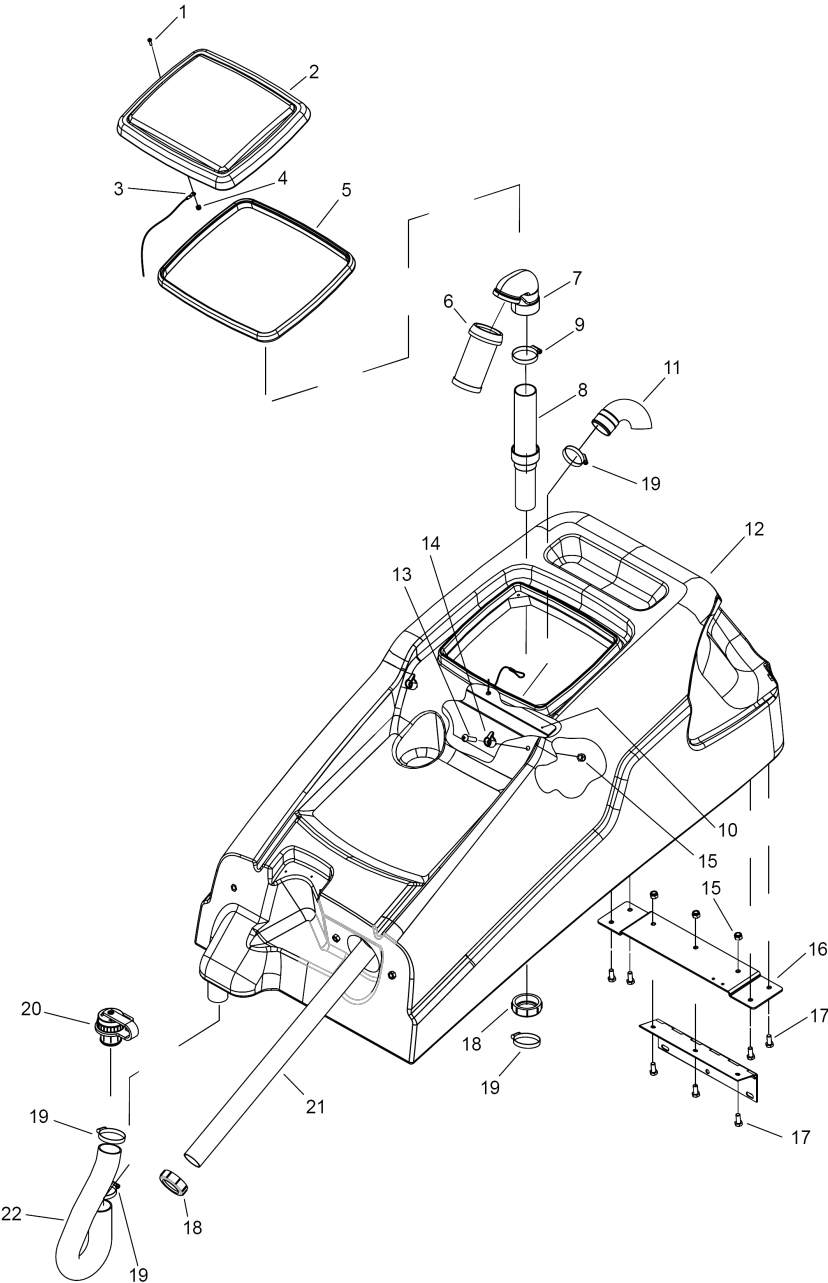
| <b>POS</b> | <b>Article no.</b> | <b>Description</b>                 | <b>Quantity</b> | <b>Unit</b> |
|------------|--------------------|------------------------------------|-----------------|-------------|
| 1          | 8.601-289.0        | WELDMENT, FRAME MAIN               | 1               | PC          |
| 2          | 8.627-678.0        | SCREW, 5/16-18 X .75 HHCS SS       | 4               | PC          |
| 3          | 8.601-067.0        | WASHER, 5/16 FLT SS                | 7               | PC          |
| 4          | 8.627-958.0        | WASHER, 1/4 FLT NYL                | 2               | PC          |
| 5          | 8.627-649.0        | SCREW, 5/16-18 X .625 HHCS SS      | 5               | PC          |
| 6          | 8.627-746.0        | SCREW, 5/16-18 X .625 SCHBTNHCS SS | 2               | PC          |
| 7          | 8.627-963.0        | WASHER, 5/16 X 1.13 X .09 FLT      | 2               | PC          |



## 140 FRAME - LOWER

---

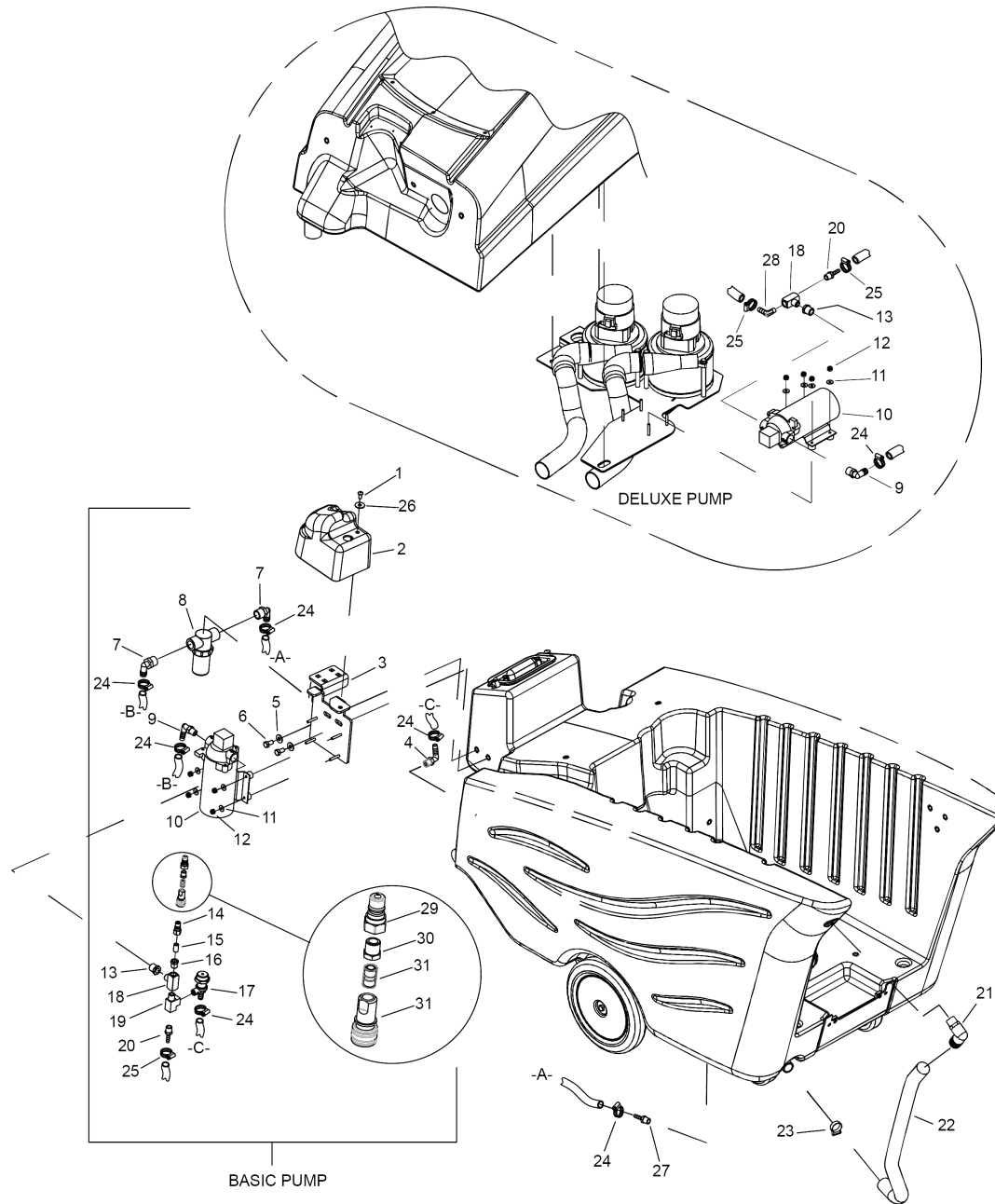
| POS | Article no. | Description                    | Quantity | Unit |
|-----|-------------|--------------------------------|----------|------|
| 1   | 8.627-678.0 | SCREW, 5/16-18 X .75 HHCS SS   | 2        | PC   |
| 2   | 8.601-067.0 | WASHER, 5/16 FLT SS            | 8        | PC   |
| 3   | 8.609-195.0 | BRKT, FRAME, CASTER MNT        | 1        | PC   |
| 4   | 8.609-257.0 | FRAME, TRANSAXLE MTG           | 1        | PC   |
| 5   | 8.627-184.0 | NUT, 5/16-18 HEXTHIN NYLOCK SS | 8        | PC   |
| 6   | 8.629-374.0 | CASTER, 4" SWIVEL, 300# CPCTY  | 2        | PC   |





150 RECOVERY TANK

| POS | Article no. | Description                    | Quantity | Unit |
|-----|-------------|--------------------------------|----------|------|
| 1   | 8.627-422.0 | SCREW, 6-32 X .625 PHPNHMS SS  | 1        | PC   |
| 2   | 8.600-334.0 | DOME, 13 X 11                  | 1        | PC   |
| 3   | 8.624-608.0 | LANYARD, 18.0 W/LOOP & EYE     | 1        | PC   |
| 4   | 8.601-481.0 | NUT, 6-32 ACORN SS             | 1        | PC   |
| 5   | 8.600-401.0 | Seal DOME EDGE                 | 1        | PC   |
| 6   | 8.619-984.0 | Cage float -1Ball              | 1        | PC   |
| 7   | 8.622-712.0 | ADAPTER, FLOAT 30 DEG          | 1        | PC   |
| 8   | 8.629-324.0 | TUBE ASM RECOVERY FLOAT        | 1        | PC   |
| 9   | 8.600-238.0 | Clamp 2.25" WORM GEAR          | 1        | PC   |
| 10  | 8.601-215.0 | BRKT, TANK STIFFEN             | 1        | PC   |
| 11  | 8.624-013.0 | Hose 45 DEG                    | 1        | PC   |
| 12  | 8.629-274.0 | TANK, RECOVERY, TRIMMED        | 1        | PC   |
| 13  | 8.629-083.0 | SCREW, 5/16-18 X 1.25 SCHCS SS | 2        | PC   |
| 14  | 8.623-846.0 | Hook                           | 2        | PC   |
| 15  | 8.627-083.0 | NUT, 5/16-18 HEX NYLOCK SS     | 5        | PC   |
| 16  | 8.601-335.0 | BRKT, RECOVERY HINGE           | 1        | PC   |
| 17  | 8.627-649.0 | SCREW, 5/16-18 X .625 HHCS SS  | 7        | PC   |
| 18  | 8.637-208.0 | NUT, 1.5 SLIP JOINT            | 2        | PC   |
| 19  | 8.600-240.0 | Clamp 2.0" WORM GEAR X .312W   | 4        | PC   |
| 20  | 8.632-898.0 | DRAIN CAP ASSEMBLY             | 1        | PC   |
| 21  | 8.608-963.0 | TUBE, 1.5 PVC X 24.0           | 1        | PC   |
| 22  | 8.600-426.0 | Hose 1.5 X 24.0 DRAIN          | 1        | PC   |



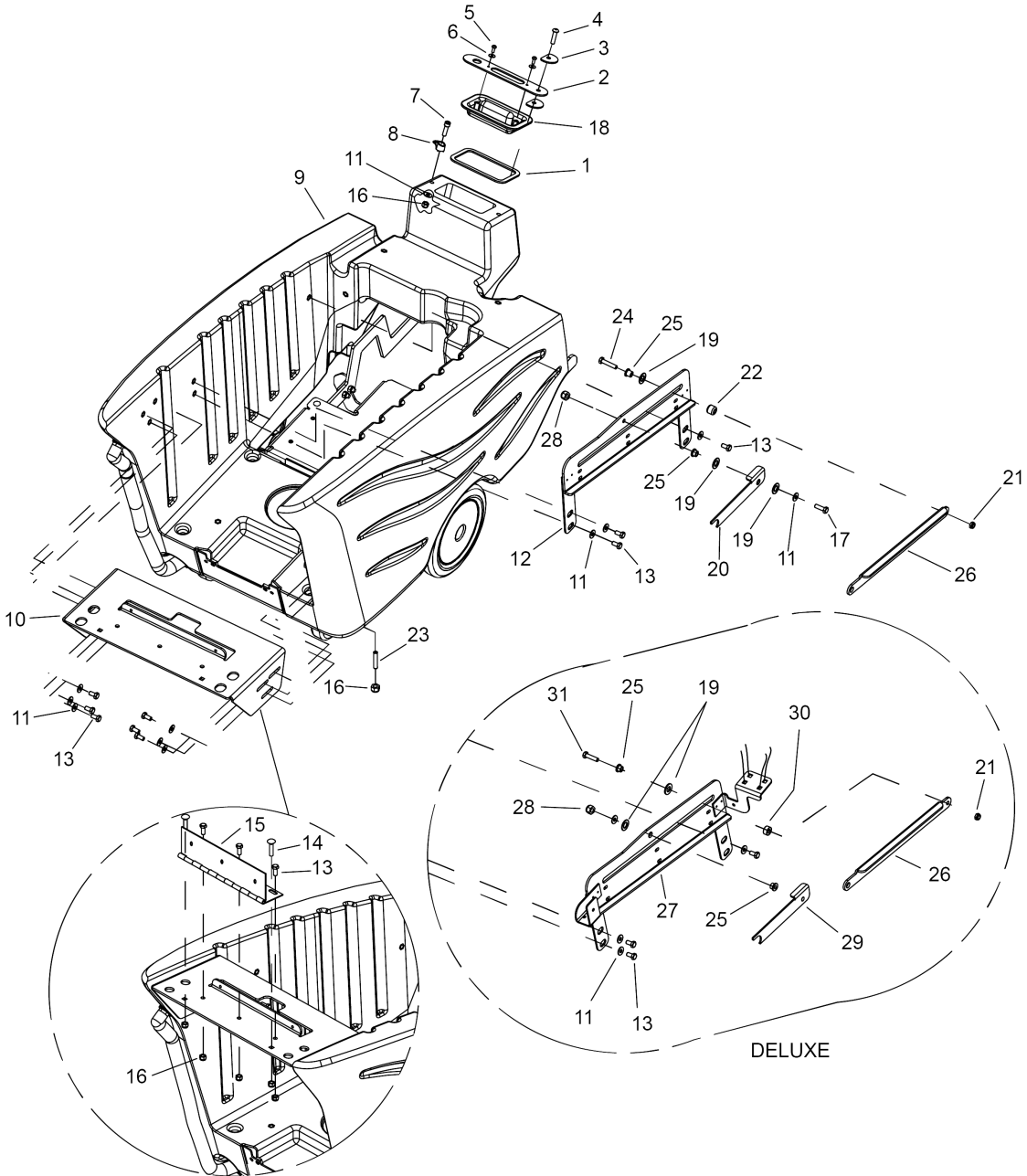
160 SOLUTION PUMP

| POS | Article no. | Description                     | Quantity | Unit |
|-----|-------------|---------------------------------|----------|------|
| 1   | 8.622-374.0 | SCREW, 1/4-20 X .59 PHPNHMS SS  | 1        | PC   |
| 2   | 8.639-499.0 | COVER, PUMP                     | 1        | PC   |
| 3   | 8.601-269.0 | BRKT, PUMP MTG                  | 1        | PC   |
| 4   | 8.624-050.0 | HOSEBARB, 1/4MPT X 3/8 90D NYL  | 1        | PC   |
| 5   | 8.601-067.0 | WASHER, 5/16 FLT SS             | 2        | PC   |
| 6   | 8.627-649.0 | SCREW, 5/16-18 X .625 HHCS SS   | 2        | PC   |
| 7   | 8.600-153.0 | HOSEBARB, 1/2MPT X 1/2 HOSE 90  | 2        | PC   |
| 8   | 8.600-587.0 | O-Ring seal filter SEAL RON-VIK | 1        | PC   |
| 8   | 8.601-276.0 | STRAINER, 1/2 FPT, 80 MESH      | 1        | PC   |
| 8   | 8.613-680.0 | SCREEN, 80 MESH STRAINER DEEP   | 1        | PC   |
| 9   | 8.619-794.0 | HOSEBARB, 3/8MPTX1/2 90D DL     | 1        | PC   |
| 10  | 8.600-610.0 | PUMP ASM, 36V ACCESSORY         | 1        | PC   |
| 11  | 8.601-065.0 | WASHER, .203 X .562 X .040 FLT  | 4        | PC   |
| 12  | 8.627-099.0 | NUT, 10-32 HEX NYLOCK SS        | 4        | PC   |
| 13  | 8.619-729.0 | BUSHING, 3/8 MPT X 1/4 FPT HEX  | 1        | PC   |
| 14  | 8.620-082.0 | Nipple 1/8                      | 1        | PC   |
| 15  | 8.624-772.0 | NIPPLE, 1/8 CLOSE               | 1        | PC   |
| 16  | 8.619-730.0 | BUSHING, 1/8 FPT X 1/4 MPT HEX  | 1        | PC   |
| 17  | 8.629-000.0 | VALVE, BYPASS, 125 PSI ADJ      | 1        | PC   |
| 18  | 8.619-773.0 | T-Piece                         | 1        | PC   |
| 19  | 8.619-776.0 | TEE, 1/4 STREET                 | 1        | PC   |
| 20  | 8.619-750.0 | HOSEBARB, 1/4MPT X 1/4 DL       | 1        | PC   |
| 21  | 8.619-798.0 | HOSEBARB, 1/2 MPT X 1.0 90D NY  | 1        | PC   |
| 22  | 8.601-136.0 | Hose 1.0 Id X 1/8w X 21 Clr     | 1        | PC   |
| 23  | 8.623-311.0 | CLAMP, 1.0" WORM GEAR           | 1        | PC   |
| 24  | 8.623-315.0 | CLAMP, 3/8 HOSE (D-SLOT)        | 7        | PC   |
| 25  | 8.623-309.0 | CLAMP, 1/4 ID HOSE              | 2        | PC   |
| 26  | 8.601-063.0 | WASHER, 1/4 SS                  | 1        | PC   |
| 27  | 8.619-791.0 | Hosebarb 1/2MPT X 1/2 POLY DL   | 1        | PC   |
| 28  | 8.624-036.0 | Hose spacer                     | 1        | PC   |
| 29  | 8.600-558.0 | Nipple 1/4 FPT QD               | 1        | PC   |
| 30  | 8.619-730.0 | BUSHING, 1/8 FPT X 1/4 MPT HEX  | 1        | PC   |
| 31  | 8.624-772.0 | NIPPLE, 1/8 CLOSE               | 1        | PC   |

160 SOLUTION PUMP

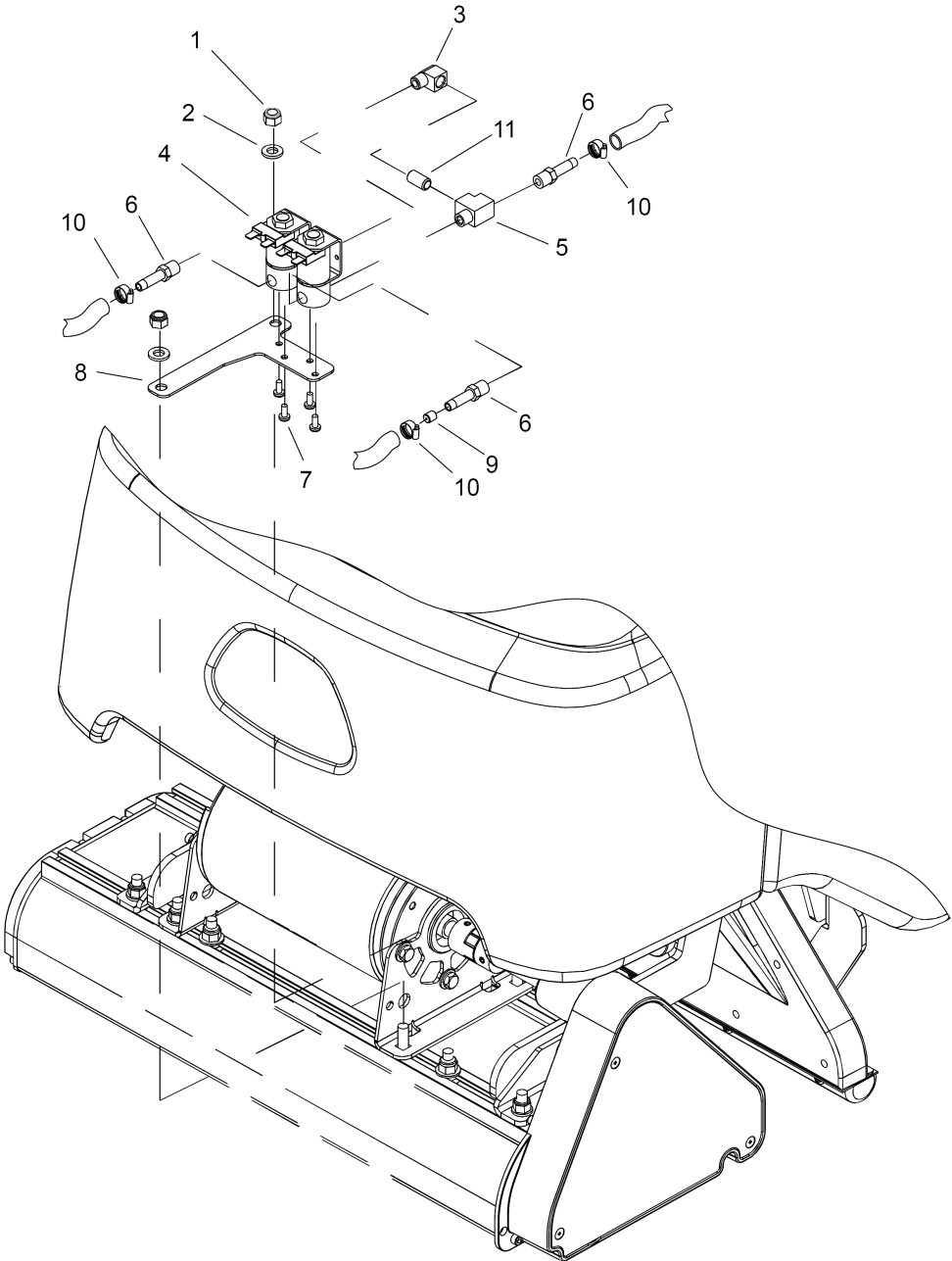
---

| POS | Article no. | Description                 | Quantity | Unit |
|-----|-------------|-----------------------------|----------|------|
| 32  | 8.620-081.0 | Nipple 1/8 FPT QD FEM BRASS | 1        | PC   |



170 SOLUTION TANK

| POS | Article no. | Description                         | Quantity | Unit |
|-----|-------------|-------------------------------------|----------|------|
| 1   | 8.601-182.0 | GASKET, INLET CAP                   | 1        | PC   |
| 2   | 8.601-181.0 | RETAINER, INLET CAP                 | 1        | PC   |
| 3   | 8.629-037.0 | WASHER, .346 STL                    | 2        | PC   |
| 4   | 8.627-676.0 | SCREW, 5/16-18 X 1.25 SCHBTNHCS SS  | 1        | PC   |
| 5   | 8.600-686.0 | SCREW, 10-16 X .5 PHPNHSMS HL SS    | 2        | PC   |
| 6   | 8.601-065.0 | WASHER, .203 X .562 X .040 FLT      | 2        | PC   |
| 7   | 8.629-083.0 | SCREW, 5/16-18 X 1.25 SCHCS SS      | 1        | PC   |
| 8   | 8.623-846.0 | Hook                                | 1        | PC   |
| 9   | 8.629-273.0 | TANK, SOLUTION, TRIMMED             | 1        | PC   |
| 10  | 8.607-220.0 | BRKT, SOLUTION HINGE                | 1        | PC   |
| 11  | 8.601-067.0 | WASHER, 5/16 FLT SS                 | 12       | PC   |
| 12  | 8.601-370.0 | WELDMENT, LIFT SLIDE                | 1        | PC   |
| 13  | 8.627-649.0 | SCREW, 5/16-18 X .625 HHCS SS       | 12       | PC   |
| 14  | 8.627-607.0 | SCREW, 5/16-18 X .75 CARR SS        | 2        | PC   |
| 15  | 8.623-963.0 | HINGE, COVER TO TANK                | 1        | PC   |
| 16  | 8.627-083.0 | NUT, 5/16-18 HEX NYLOCK SS          | 9        | PC   |
| 17  | 8.627-576.0 | Screw 5/16-18 X 1 HHCS GR8 PLTD     | 1        | PC   |
| 18  | 8.621-754.0 | COVER, SOLUTION TANK                | 1        | PC   |
| 19  | 8.625-941.0 | WASHER, .51 X 10 X .063 THR         | 3        | PC   |
| 20  | 8.629-019.0 | BRKT, PROP ROD CATCH                | 1        | PC   |
| 21  | 8.627-184.0 | NUT, 5/16-18 HEXTHIN NYLOCK SS      | 1        | PC   |
| 22  | 8.625-991.0 | WHEEL, BATTERY TRAY                 | 1        | PC   |
| 23  | 8.627-638.0 | SCREW, 5/16-18 X 1.25 SCHSET CP SS  | 2        | PC   |
| 24  | 8.627-472.0 | SCREW, 5/16-18 X 1.5 HHCS SS        | 1        | PC   |
| 25  | 8.622-899.0 | BUSHING, .314 X .502 X .375 FLG BRZ | 2        | PC   |
| 26  | 8.601-163.0 | PLATE, PROP ROD                     | 1        | PC   |
| 27  | 8.601-149.0 | WELDMENT, LIFT SLIDE, STRAINER      | 1        | PC   |
| 28  | 8.619-704.0 | NUT, 5/16-18 ACORN STL NKLPLT       | 1        | PC   |
| 29  | 8.629-573.0 | BRKT, PROP ROD CATCH                | 1        | PC   |
| 30  | 8.629-370.0 | SPACER, .75 O X.332 ID X .38L       | 1        | PC   |
| 31  | 8.600-702.0 | SCREW, 5/16-18 X 1.25 HHCS SS NP    | 1        | PC   |

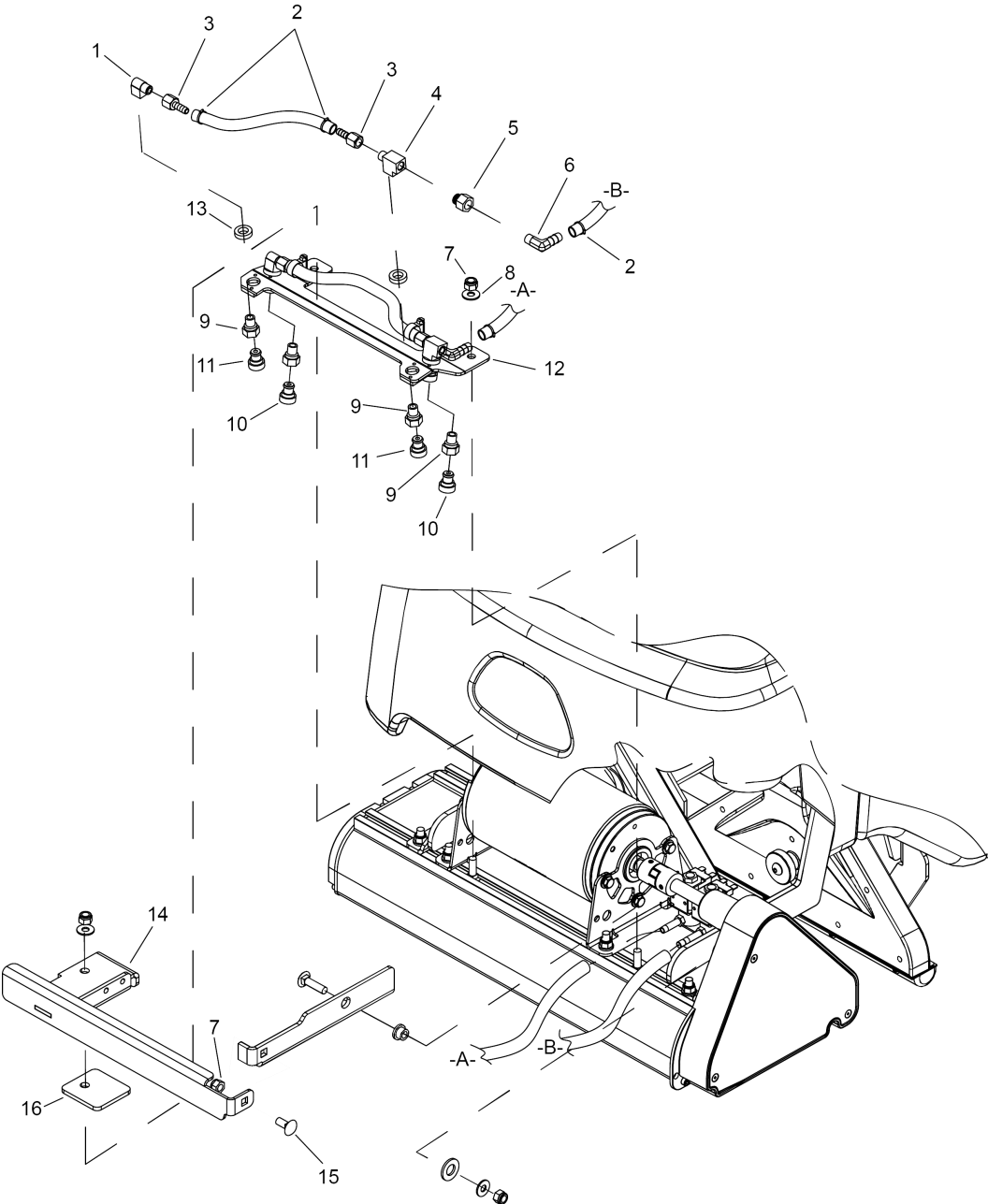


## 180 SPRAY JET VALVES

---

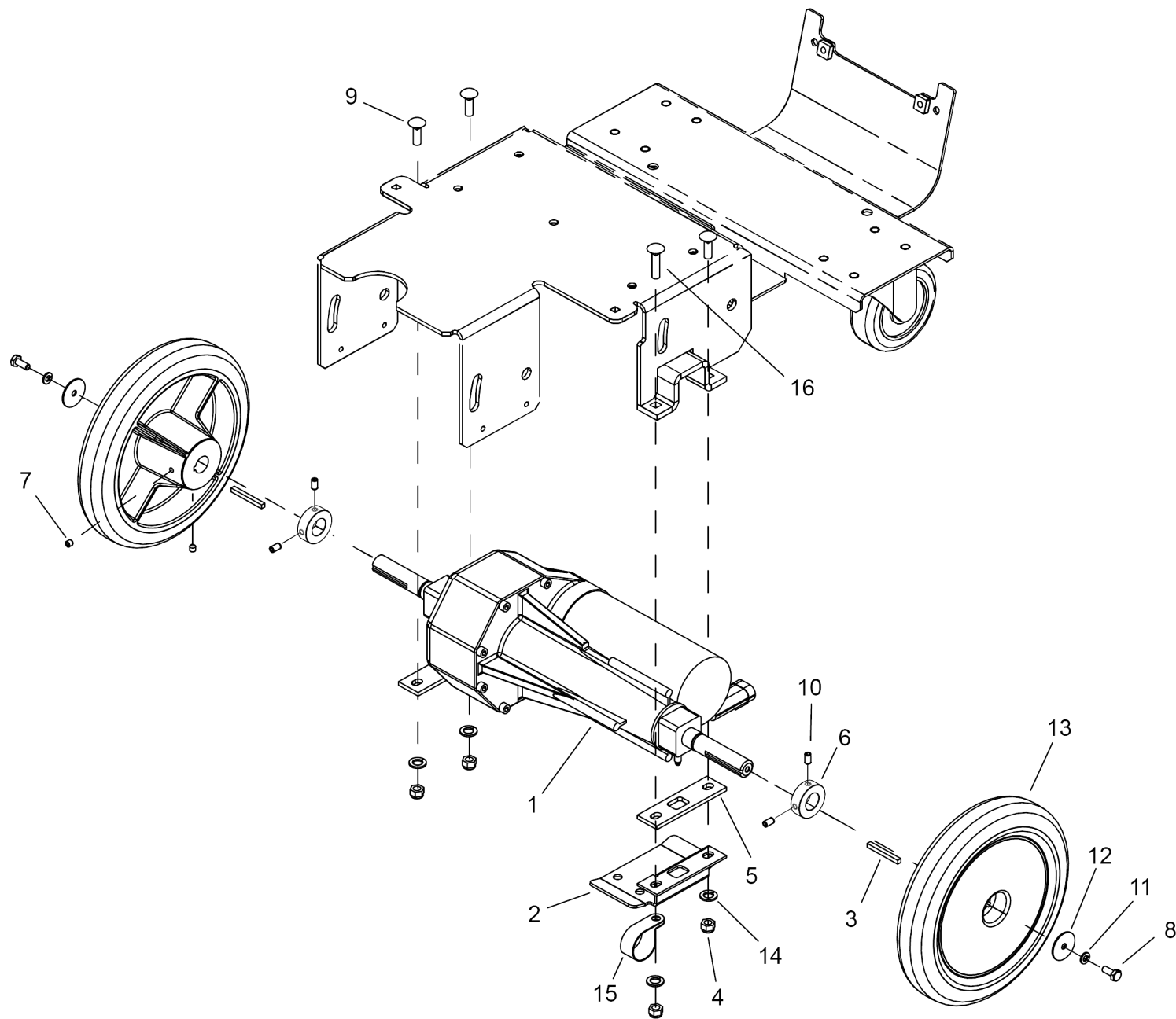
| POS | Article no. | Description                    | Quantity | Unit |
|-----|-------------|--------------------------------|----------|------|
| 1   | 8.627-083.0 | NUT, 5/16-18 HEX NYLOCK SS     | 2        | PC   |
| 2   | 8.601-067.0 | WASHER, 5/16 FLT SS            | 2        | PC   |
| 3   | 8.619-740.0 | ELBOW, 1/8NPT STREET           | 1        | PC   |
| 4   | 8.601-303.0 | VALVE, 36VDC SOLENOID, 1/8 FPT | 2        | PC   |
| 5   | 8.619-775.0 | TEE, 1/8 NPT STREET RUN        | 1        | PC   |
| 6   | 8.619-752.0 | Hosebarb 1/8MPT X 1/4 DL       | 3        | PC   |
| 7   | 8.635-309.0 | SCREW, 8-32 X 0.313 PHPNHMS SS | 4        | PC   |
| 8   | 8.601-307.0 | BRACKET, DUO VALVE MOUNT       | 1        | PC   |
| 9   | 8.601-425.0 | ORIFICE, .052 ID, .281 OD      | 1        | PC   |
| 10  | 8.623-309.0 | CLAMP, 1/4 ID HOSE             | 3        | PC   |
| 11  | 8.624-772.0 | NIPPLE, 1/8 CLOSE              | 1        | PC   |





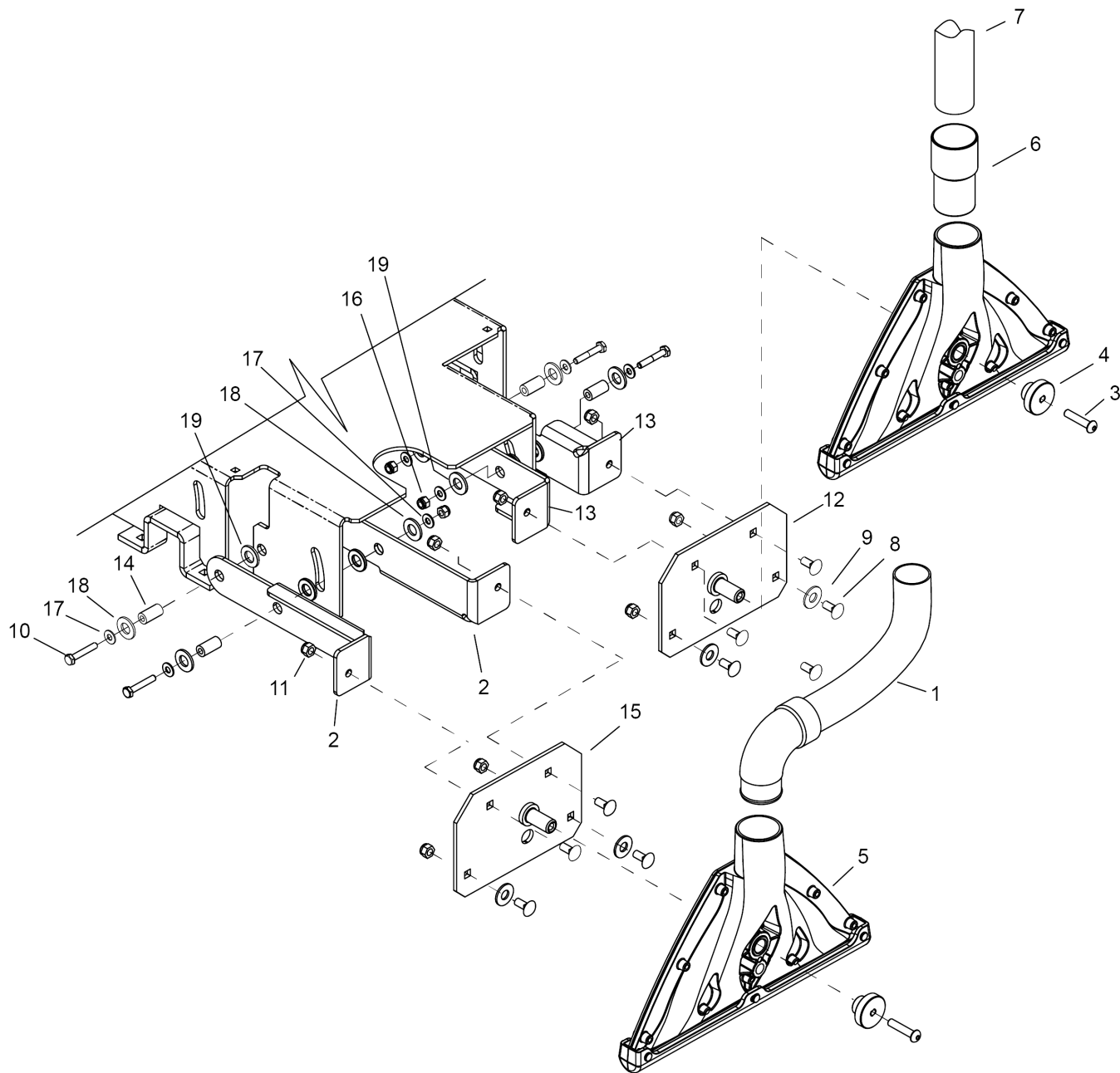
## 190 SPRAY JETS

| POS | Article no. | Description                   | Quantity | Unit |
|-----|-------------|-------------------------------|----------|------|
| 1   | 8.619-740.0 | ELBOW, 1/8NPT STREET          | 2        | PC   |
| 2   | 8.623-309.0 | CLAMP, 1/4 ID HOSE            | 6        | PC   |
| 3   | 8.619-764.0 | Joining piece                 | 4        | PC   |
| 4   | 8.619-775.0 | TEE, 1/8 NPT STREET RUN       | 2        | PC   |
| 5   | 8.622-720.0 | ADPTR 1/8MPTX1/8FPT BS AD     | 1        | PC   |
| 6   | 8.624-061.0 | HOSEBARB, 1/8MPT X 1/4H 90D   | 2        | PC   |
| 7   | 8.627-083.0 | NUT, 5/16-18 HEX NYLOCK SS    | 3        | PC   |
| 8   | 8.601-067.0 | WASHER, 5/16 FLT SS           | 2        | PC   |
| 9   | 8.600-457.0 | JET BODY, MINI PROMAX BODY    | 4        | PC   |
| 10  | 8.601-320.0 | JET, MINI PROMAX 11004        | 2        | PC   |
| 11  | 8.601-255.0 | JET, PROMAX, 11001            | 2        | PC   |
| 12  | 8.609-188.0 | BRKT, JET, DUAL               | 1        | PC   |
| 13  | 8.601-082.0 | Washer 7/16 X 3/4 X .19RUBBER | 4        | PC   |
| 14  | 8.629-631.0 | Plate buffer assembly         | 1        | PC   |
| 15  | 8.627-607.0 | SCREW, 5/16-18 X .75 CARR SS  | 1        | PC   |
| 16  | 8.629-703.0 | PLATE, BUMPER SPACER          | 1        | PC   |



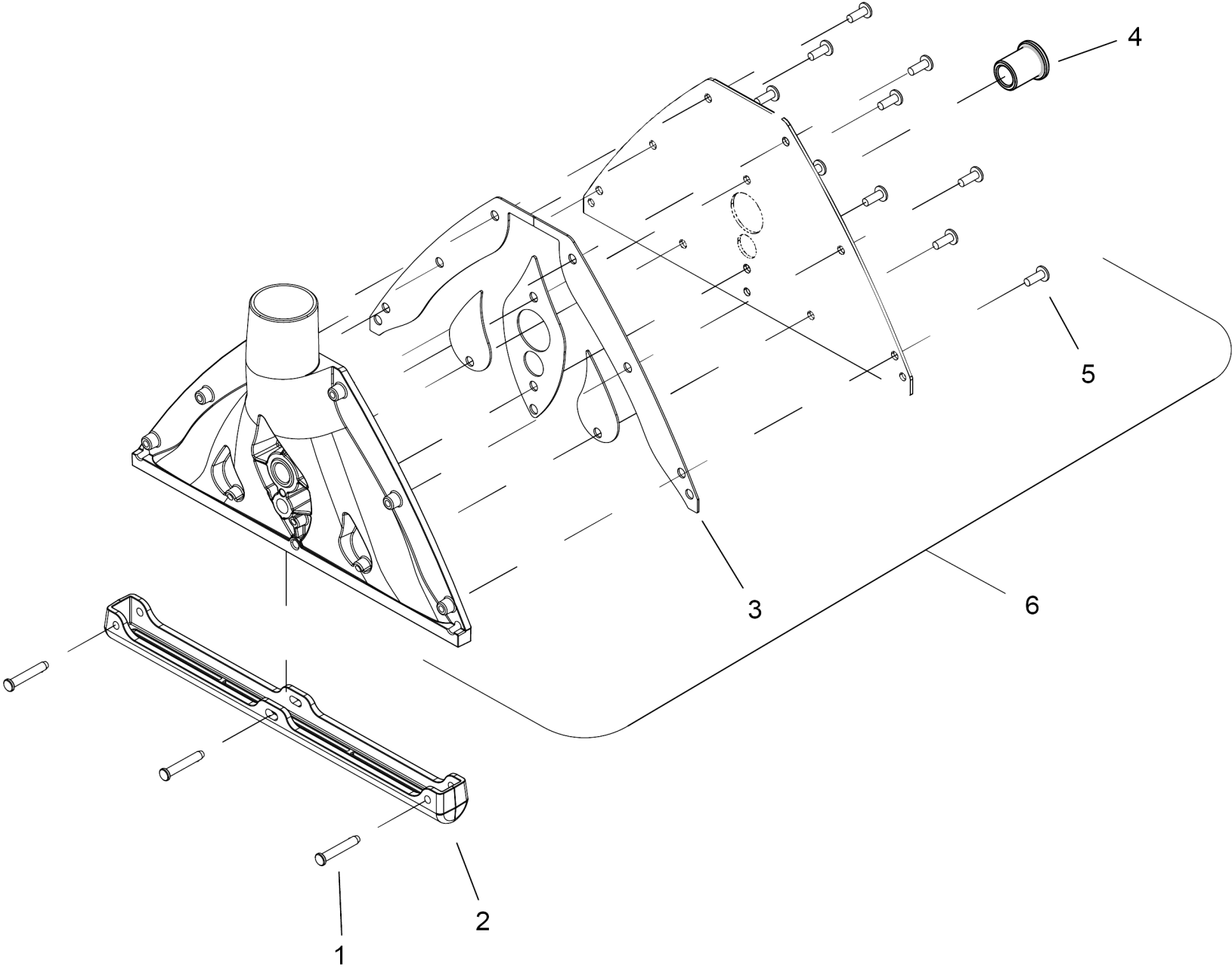
200 WHEEL/DRIVE ASSEMBLY

| POS | Article no. | Description                              | Quantity | Unit |
|-----|-------------|--|----------|------|
| 1   | 8.628-882.0 | BRUSH SET, TRANSAXLE 78434 CCL (2)       | 1        | PC   |
| 1   | 8.631-513.0 | TRANSAXLE, 36 VDC                        | 1        | PC   |
| 2   | 8.607-210.0 | BRKT, CABLE GUARD                        | 1        | PC   |
| 3   | 8.627-044.0 | KEY, 3/16 X 3/16 X 1.75 SS               | 2        | PC   |
| 4   | 8.627-083.0 | NUT, 5/16-18 HEX NYLOCK SS               | 4        | PC   |
| 5   | 8.607-960.0 | PLATE, TRANSAXLE CONNECTION              | 2        | PC   |
| 6   | 8.631-685.0 | COLLAR, .50"WX .754"ID                   | 2        | PC   |
| 7   | 8.627-793.0 | SCREW, 1/4-20 X .375 SCHSET KCP BLKOX NP | 8        | PC   |
| 8   | 8.627-375.0 | SCREW, 1/4-20 X .625 HHCS SS NP          | 2        | PC   |
| 9   | 8.627-713.0 | SCREW, 5/16-18 X 1 CARR SS               | 3        | PC   |
| 10  | 8.627-793.0 | SCREW, 1/4-20 X .375 SCHSET KCP BLKOX NP | 4        | PC   |
| 11  | 8.601-078.0 | WASHER, 1/4 SPL STL ZNPLT                | 2        | PC   |
| 12  | 8.627-894.0 | WASHER, 1/4 STL ZNPLT                    | 2        | PC   |
| 13  | 8.622-604.0 | WHEEL, 9X1.6, .75IN BORE                 | 2        | PC   |
| 14  | 8.601-067.0 | WASHER, 5/16 FLT SS                      | 4        | PC   |
| 15  | 8.617-704.0 | CLAMP, CABLE 1-1/4 ID 5/16 BLT           | 1        | PC   |
| 16  | 8.627-703.0 | SCREW, 5/16-18 X 1.25 CARR SS            | 1        | PC   |



210 VACUUM SHOE MOUNTING

| POS | Article no. | Description                       | Quantity | Unit |
|-----|-------------|-----------------------------------|----------|------|
| 1   | 8.621-915.0 | HOSE ASM, 1.5 BLK VAC X 30"       | 1        | PC   |
| 2   | 8.607-217.0 | BRKT, VAC LIFT, LONG              | 2        | PC   |
| 3   | 8.627-665.0 | SCREW, 5/16-18 X 1.5 SCHBTNHCS SS | 2        | PC   |
| 4   | 8.621-969.0 | Turning knob                      | 2        | PC   |
| 5   | 8.629-654.0 | VACSHOE, 13IN W/ WIPER            | 2        | PC   |
| 6   | 8.600-301.0 | Collar HOSE 1.5" BLK A 2161       | 1        | PC   |
| 7   | 8.623-988.0 | HOSE, 1.5 BLK VAC X 22"           | 1        | PC   |
| 8   | 8.627-607.0 | SCREW, 5/16-18 X .75 CARR SS      | 8        | PC   |
| 9   | 8.601-077.0 | WASHER, 7/16 X1 X .08 FLT SS      | 4        | PC   |
| 10  | 8.627-374.0 | SCREW, 1/4-20 X 1.5 HHCS SS       | 4        | PC   |
| 11  | 8.627-083.0 | NUT, 5/16-18 HEX NYLOCK SS        | 8        | PC   |
| 12  | 8.609-362.0 | Fixing plate                      | 1        | PC   |
| 13  | 8.607-218.0 | BRKT, VAC LIFT, SHORT             | 2        | PC   |
| 14  | 8.622-892.0 | BUSHING, .252 X .503 X 1 FLG BRZ  | 4        | PC   |
| 15  | 8.609-363.0 | Fixing plate                      | 1        | PC   |
| 16  | 8.627-187.0 | NUT, 1/4-20 HEXTHIN NYLOCK SS     | 4        | PC   |
| 17  | 8.601-063.0 | WASHER, 1/4 SS                    | 8        | PC   |
| 18  | 8.625-942.0 | WASHER, .510 X 1 THR              | 8        | PC   |
| 19  | 8.625-940.0 | WASHER, .51 THR                   | 8        | PC   |

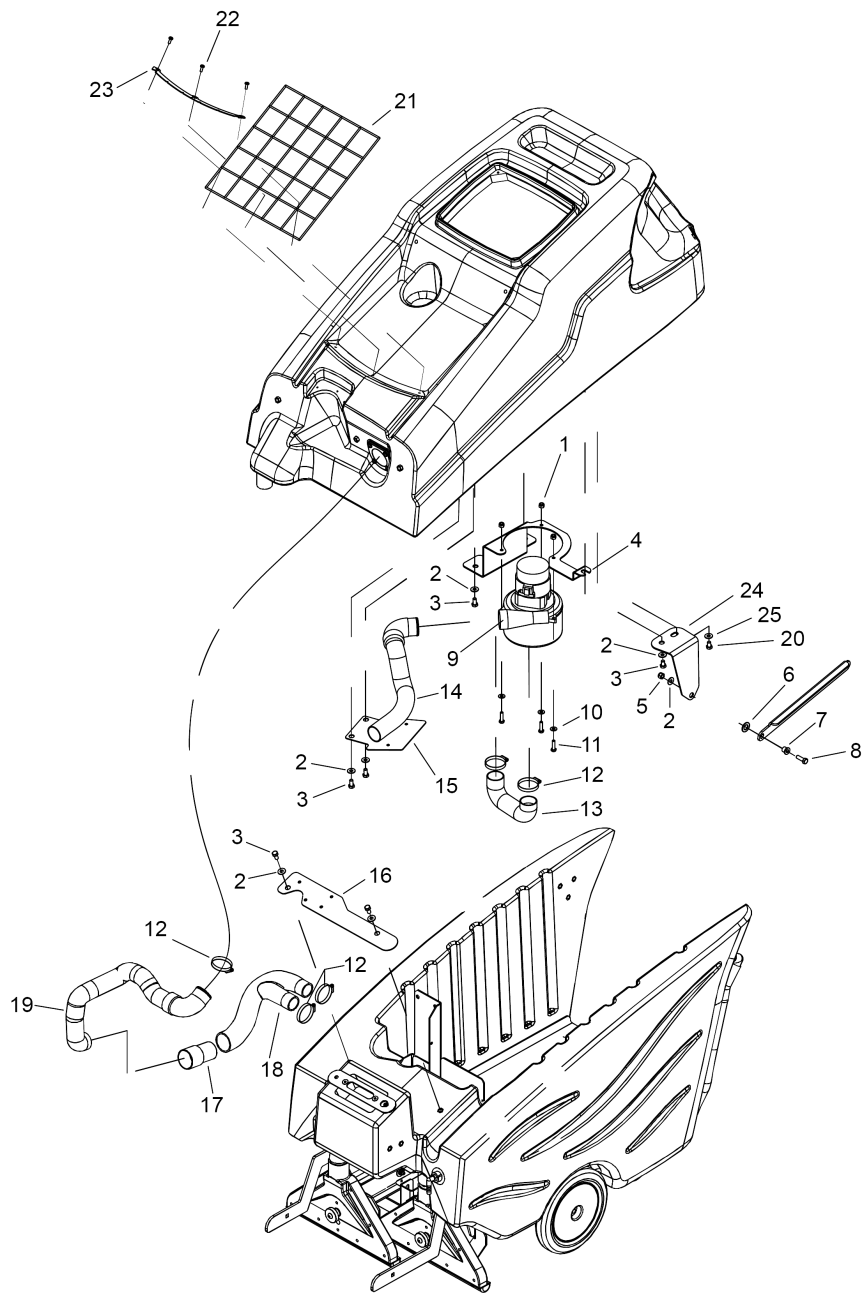


## 220 VACUUM SHOE

---

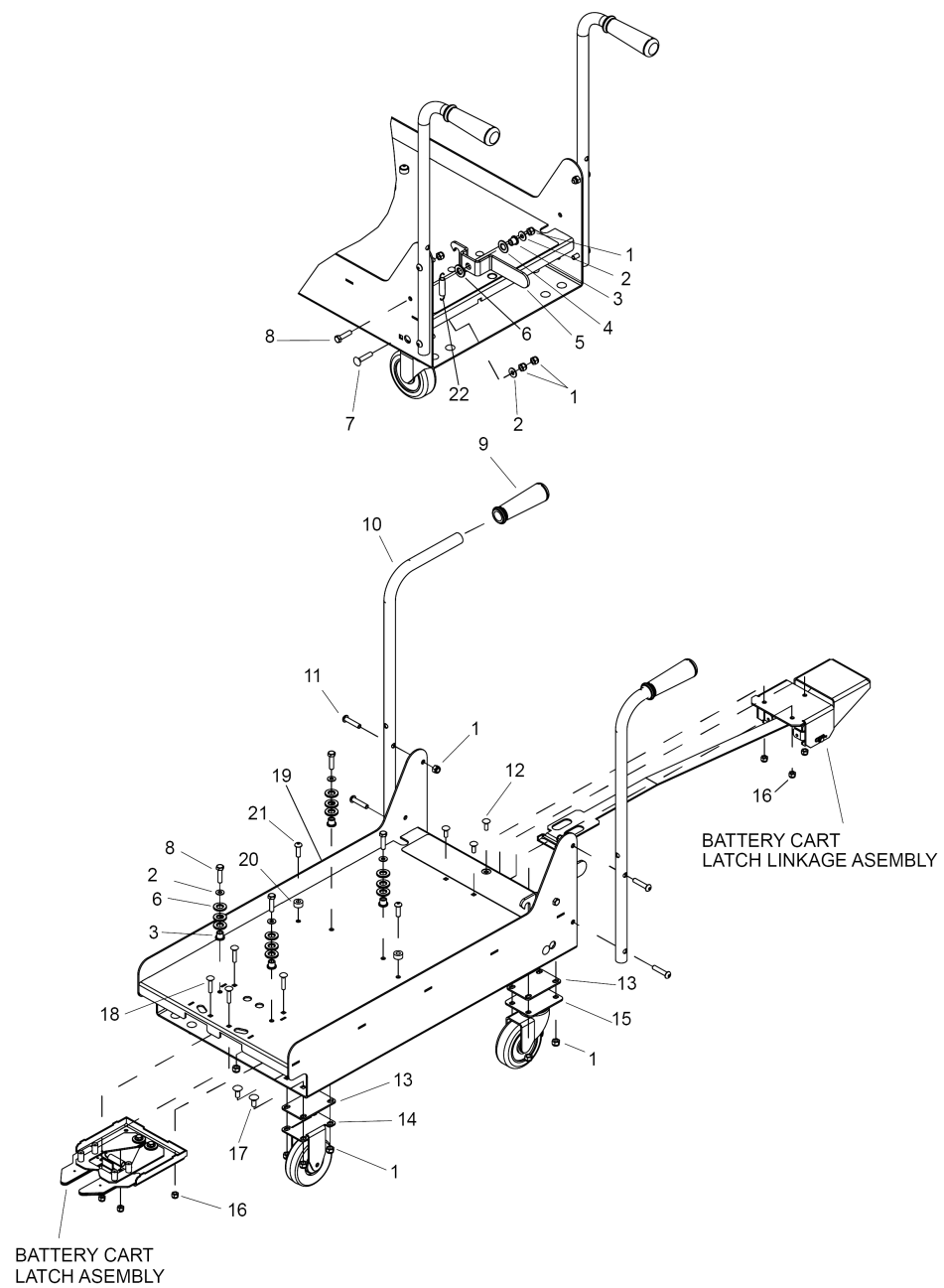
| POS | Article no. | Description                     | Quantity | Unit |
|-----|-------------|---------------------------------|----------|------|
| 1   | 8.629-319.0 | PIN, CLEVIS 1/4 X 1.5 STL ZNPLT | 3        | PC   |
| 2   | 8.629-652.0 | WIPER, 13IN W/ GASKET           | 1        | PC   |
| 3   | 8.631-075.0 | ASSEMBLY, GASKETS, VAC SHOE     | 1        | PC   |
| 4   | 8.629-635.0 | BUSHING, BRONZE, PM, 15.93 ID   | 1        | PC   |
| 5   | 8.630-270.0 | SCREW, M6 X 16 PH SS            | 10       | PC   |
| 6   | 8.629-655.0 | VACSHOE, 13 IN                  | 1        | PC   |





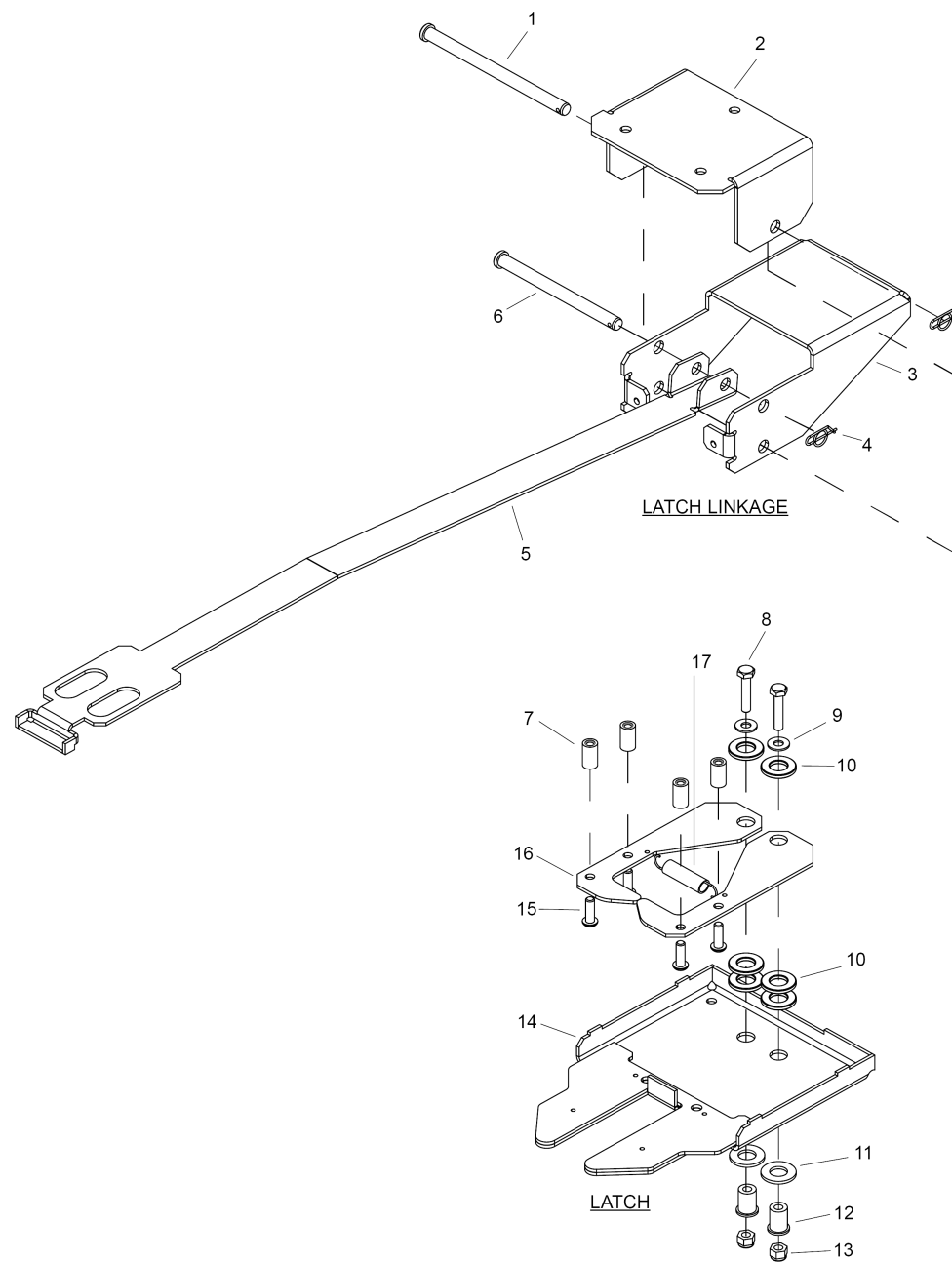
## 230 VACUUM

| POS | Article no. | Description                     | Quantity | Unit |
|-----|-------------|---------------------------------|----------|------|
| 1   | 8.627-187.0 | NUT, 1/4-20 HEXTHIN NYLOCK SS   | 3        | PC   |
| 2   | 8.601-067.0 | WASHER, 5/16 FLT SS             | 8        | PC   |
| 3   | 8.627-649.0 | SCREW, 5/16-18 X .625 HHCS SS   | 7        | PC   |
| 4   | 8.601-464.0 | BRKT, VAC MOTOR                 | 1        | PC   |
| 5   | 8.627-083.0 | NUT, 5/16-18 HEX NYLOCK SS      | 1        | PC   |
| 6   | 8.625-941.0 | WASHER, .51 X 10 X .063 THR     | 1        | PC   |
| 7   | 8.622-884.0 | BUSHING, .314 X .502 X .5 FLG   | 1        | PC   |
| 8   | 8.627-576.0 | Screw 5/16-18 X 1 HHCS GR8 PLTD | 1        | PC   |
| 9   | 8.600-545.0 | VAC MOTOR ASM, 36VDC 3 STAGE    | 1        | PC   |
| 9   | 8.683-043.0 | Carbon brush for 24/36V C-motor | 1        | PC   |
| 10  | 8.601-063.0 | WASHER, 1/4 SS                  | 3        | PC   |
| 11  | 8.627-381.0 | SCREW, 1/4-20 X 1 HHCS SS       | 3        | PC   |
| 12  | 8.600-240.0 | Clamp 2.0" WORM GEAR X .312W    | 5        | PC   |
| 13  | 8.601-287.0 | HOSE, 1.5 BLK VAC X 11"         | 1        | PC   |
| 14  | 8.600-442.0 | Hose assembly 1.5 BLK VAC X 14  | 1        | PC   |
| 15  | 8.607-189.0 | BRKT, VACUUM EXHAUST            | 1        | PC   |
| 16  | 8.607-188.0 | BRKT, VACUUM JUNCTION           | 1        | PC   |
| 17  | 8.600-301.0 | Collar HOSE 1.5" BLK A 2161     | 1        | PC   |
| 18  | 8.607-533.0 | Coupler                         | 1        | PC   |
| 19  | 8.600-437.0 | Hose assembly 1.5 BLK VAC X 21  | 1        | PC   |
| 20  | 8.627-678.0 | SCREW, 5/16-18 X .75 HHCS SS    | 1        | PC   |
| 21  | 8.629-263.0 | NET, CARGO                      | 1        | PC   |
| 22  | 8.600-695.0 | SCREW, 10-32 X .5 PHPNHMS       | 3        | PC   |
| 23  | 8.629-264.0 | BRKT, CARGO NET                 | 1        | PC   |
| 24  | 8.601-164.0 | BRKT, PROP ROD PIVOT            | 1        | PC   |
| 25  | 8.627-963.0 | WASHER, 5/16 X 1.13 X .09 FLT   | 1        | PC   |



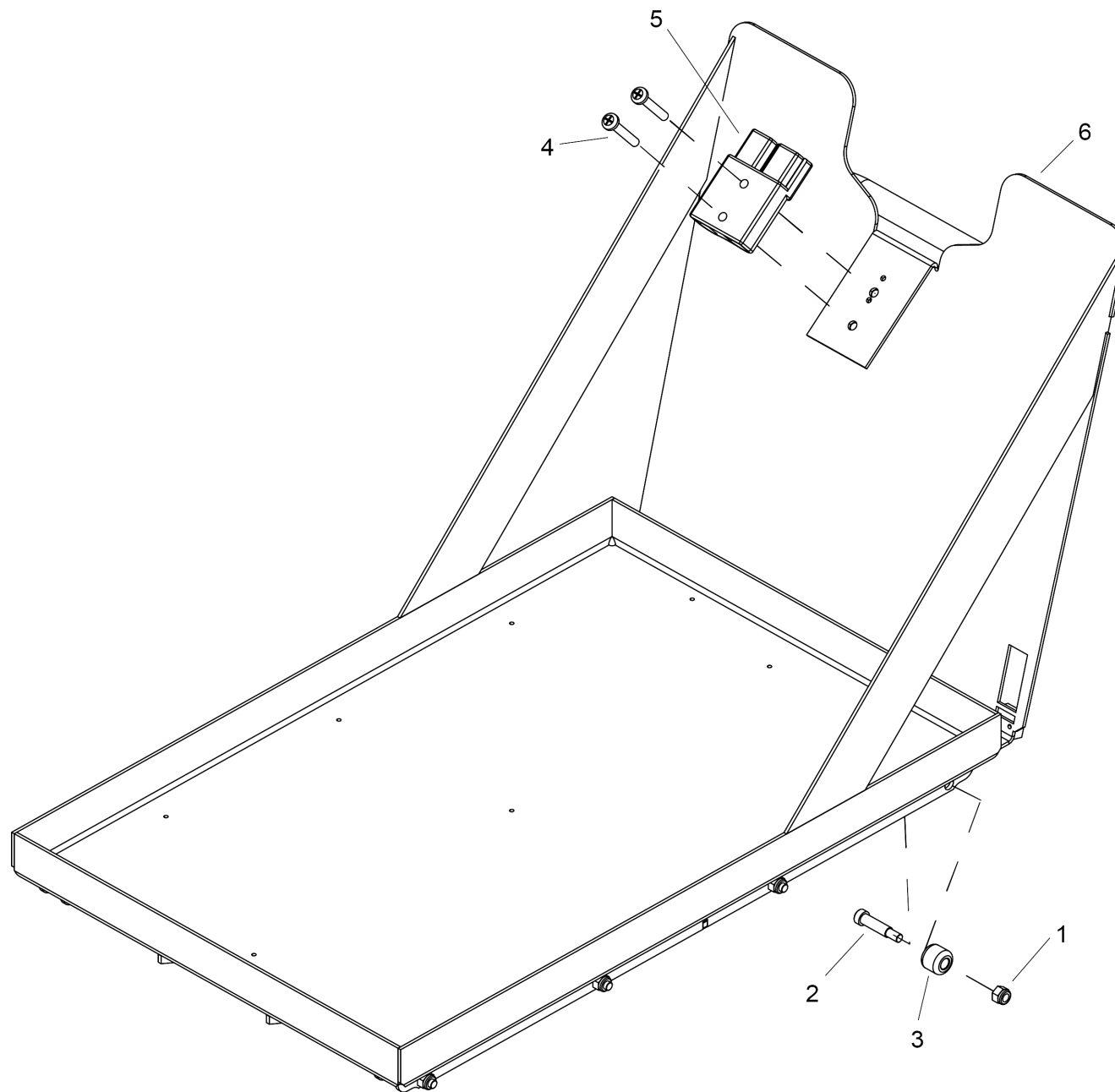
240 BATTERY CART

| POS | Article no. | Description                              | Quantity | Unit |
|-----|-------------|--|----------|------|
| 1   | 8.627-083.0 | NUT, 5/16-18 HEX NYLOCK SS               | 29       | PC   |
| 2   | 8.601-067.0 | WASHER, 5/16 FLT SS                      | 6        | PC   |
| 3   | 8.622-884.0 | BUSHING, .314 X .502 X .5 FLG            | 5        | PC   |
| 4   | 8.625-941.0 | WASHER, .51 X 10 X .063 THR              | 1        | PC   |
| 5   | 8.606-849.0 | BRKT, TRAY CATCH                         | 1        | PC   |
| 6   | 8.625-940.0 | WASHER, .51 THR                          | 13       | PC   |
| 7   | 8.627-747.0 | SCREW, 5/16-18 X 1.5 CARR SS             | 1        | PC   |
| 8   | 8.627-491.0 | SCREW, 5/16-18 X 1.25 HHCS STL GR5 ZNPLT | 5        | PC   |
| 9   | 8.600-407.0 | GRIP, POLISHER HANDLE                    | 2        | PC   |
| 10  | 7.777-999.0 | Stockpiling discontinued                 | 2        | PC   |
| 11  | 8.627-665.0 | SCREW, 5/16-18 X 1.5 SCHBTNHCS SS        | 4        | PC   |
| 12  | 8.627-695.0 | SCREW, 1/4-20 X .75 CARR SS              | 3        | PC   |
| 13  | 7.777-999.0 | Stockpiling discontinued                 | 4        | PC   |
| 14  | 8.623-259.0 | CASTER, 4" HARD RUBBER RIGID             | 2        | PC   |
| 15  | 8.619-943.0 | CASTER SWIVEL 4" 250# CPCTY              | 2        | PC   |
| 16  | 8.627-187.0 | NUT, 1/4-20 HEXTHIN NYLOCK SS            | 7        | PC   |
| 17  | 8.627-607.0 | SCREW, 5/16-18 X .75 CARR SS             | 16       | PC   |
| 18  | 8.627-633.0 | SCREW, 1/4-20 X 1.25 CARR                | 4        | PC   |
| 19  | 8.629-288.0 | HOUSING, BATTERY CART                    | 1        | PC   |
| 20  | 7.777-999.0 | Stockpiling discontinued                 | 2        | PC   |
| 21  | 8.600-693.0 | SCREW, 5/16-18 X 1 SCHBTNHCS SS          | 2        | PC   |
| 22  | 8.625-506.0 | SPRING, EXT .43D X2.50L X.047W           | 1        | PC   |



250 BATTERY CART - LATCH/LINKAGE

| POS | Article no. | Description                         | Quantity | Unit |
|-----|-------------|-------------------------------------|----------|------|
| 1   | 8.600-886.0 | Bolt                                | 1        | PC   |
| 2   | 8.629-287.0 | BRKT, PEDAL, BATTERY CART           | 1        | PC   |
| 3   | 8.629-286.0 | PEDAL, BATTERY CART                 | 1        | PC   |
| 4   | 8.600-866.0 | Cotter 5/16" RING                   | 2        | PC   |
| 5   | 8.629-285.0 | LINKAGE, LATCH, BATTERY CART        | 1        | PC   |
| 6   | 8.624-906.0 | Bolt                                | 1        | PC   |
| 7   | 8.629-820.0 | STANDOFF, .43 OD, 1/4-20 X.75L      | 4        | PC   |
| 8   | 8.627-382.0 | SCREW, 1/4-20 X 1.25 HHMS SS        | 2        | PC   |
| 9   | 8.601-063.0 | WASHER, 1/4 SS                      | 2        | PC   |
| 10  | 8.625-940.0 | WASHER, .51 THR                     | 6        | PC   |
| 11  | 8.625-942.0 | WASHER, .510 X 1 THR                | 2        | PC   |
| 12  | 8.622-890.0 | BUSHING, .252 X .503 X .75 FLG      | 2        | PC   |
| 13  | 8.627-187.0 | NUT, 1/4-20 HEXTHIN NYLOCK SS       | 2        | PC   |
| 14  | 8.601-127.0 | COVER, LATCH, BATTERY CART          | 1        | PC   |
| 15  | 8.627-546.0 | SCREW, 1/4-20 X .75 SCHBTNHCS BLKOX | 4        | PC   |
| 16  | 8.629-298.0 | LATCH, BATTERY CART                 | 2        | PC   |
| 17  | 8.625-506.0 | SPRING, EXT .43D X2.50L X.047W      | 1        | PC   |

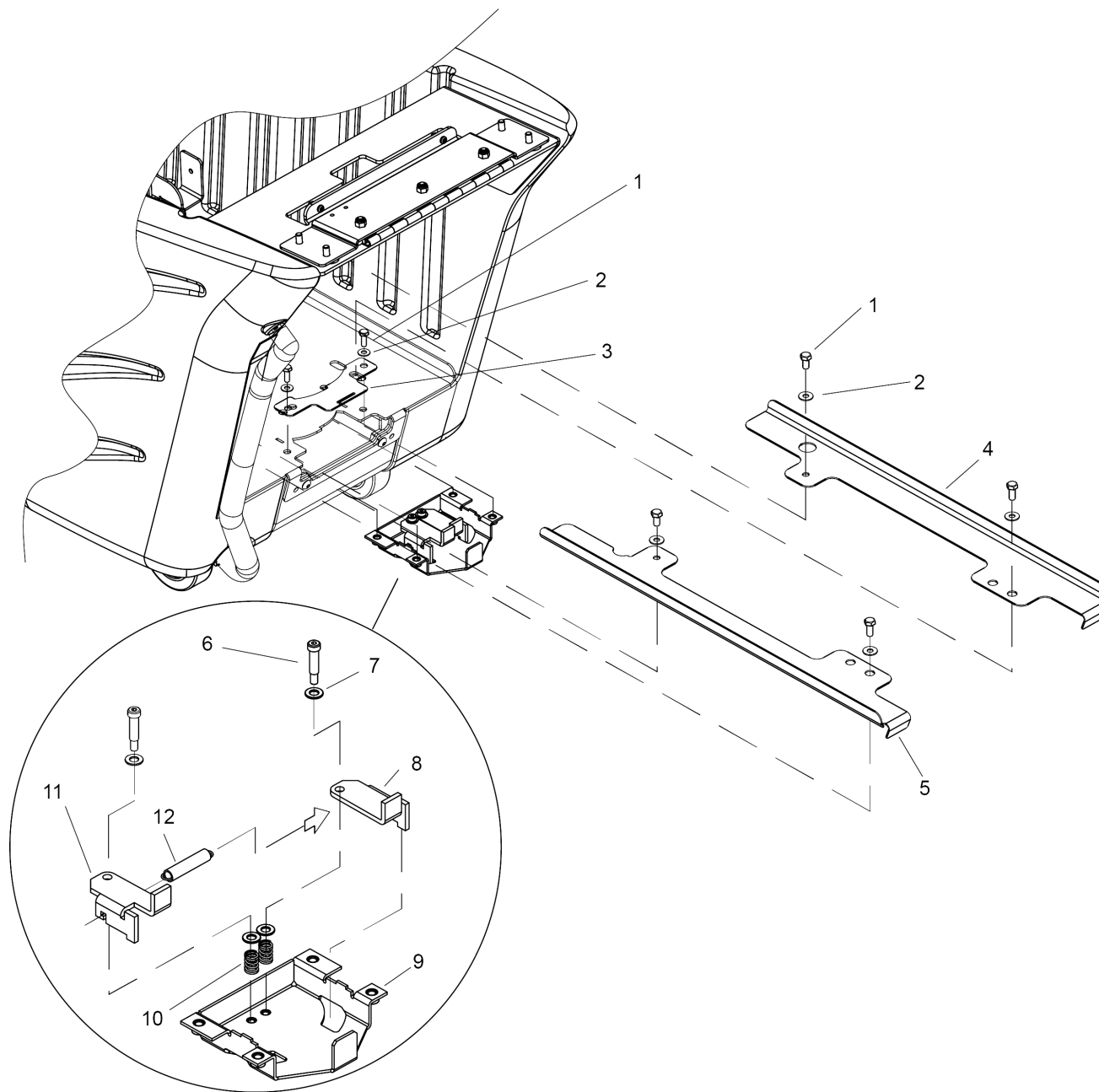


## 260 BATTERY CART TRAY

---

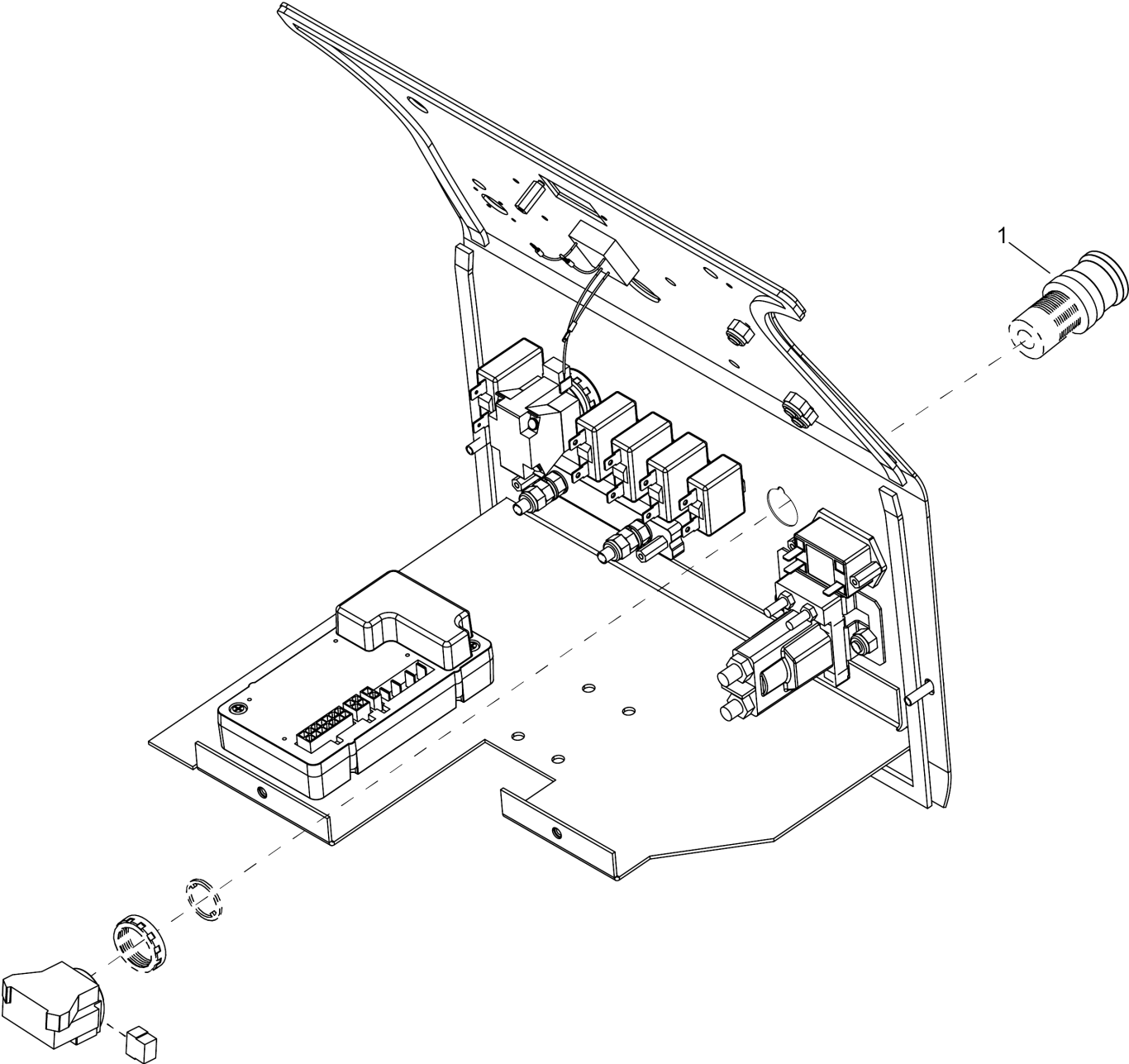
| <b>POS</b> | <b>Article no.</b> | <b>Description</b>                 | <b>Quantity</b> | <b>Unit</b> |
|------------|--------------------|------------------------------------|-----------------|-------------|
| 1          | 8.627-187.0        | NUT, 1/4-20 HEXTHIN NYLOCK SS      | 10              | PC          |
| 2          | 8.627-815.0        | SHOULDER BOLT, 5/16 X 1L STL ZNPLT | 8               | PC          |
| 3          | 8.628-106.0        | Hose 1/4ID NYLOBRD X 8"            | 8               | PC          |
| 4          | 8.627-587.0        | SCREW, 1/4-20 X 1.5 PHPNHMS SS     | 2               | PC          |
| 5          | 8.600-876.0        | CONNECTOR 175 DCA GRY W/O TERMS    | 1               | PC          |
| 6          | 8.601-153.0        | BATTERY TRAY, WELDMENT             | 1               | PC          |





## 270 BATTERY EXCHANGE OPTION

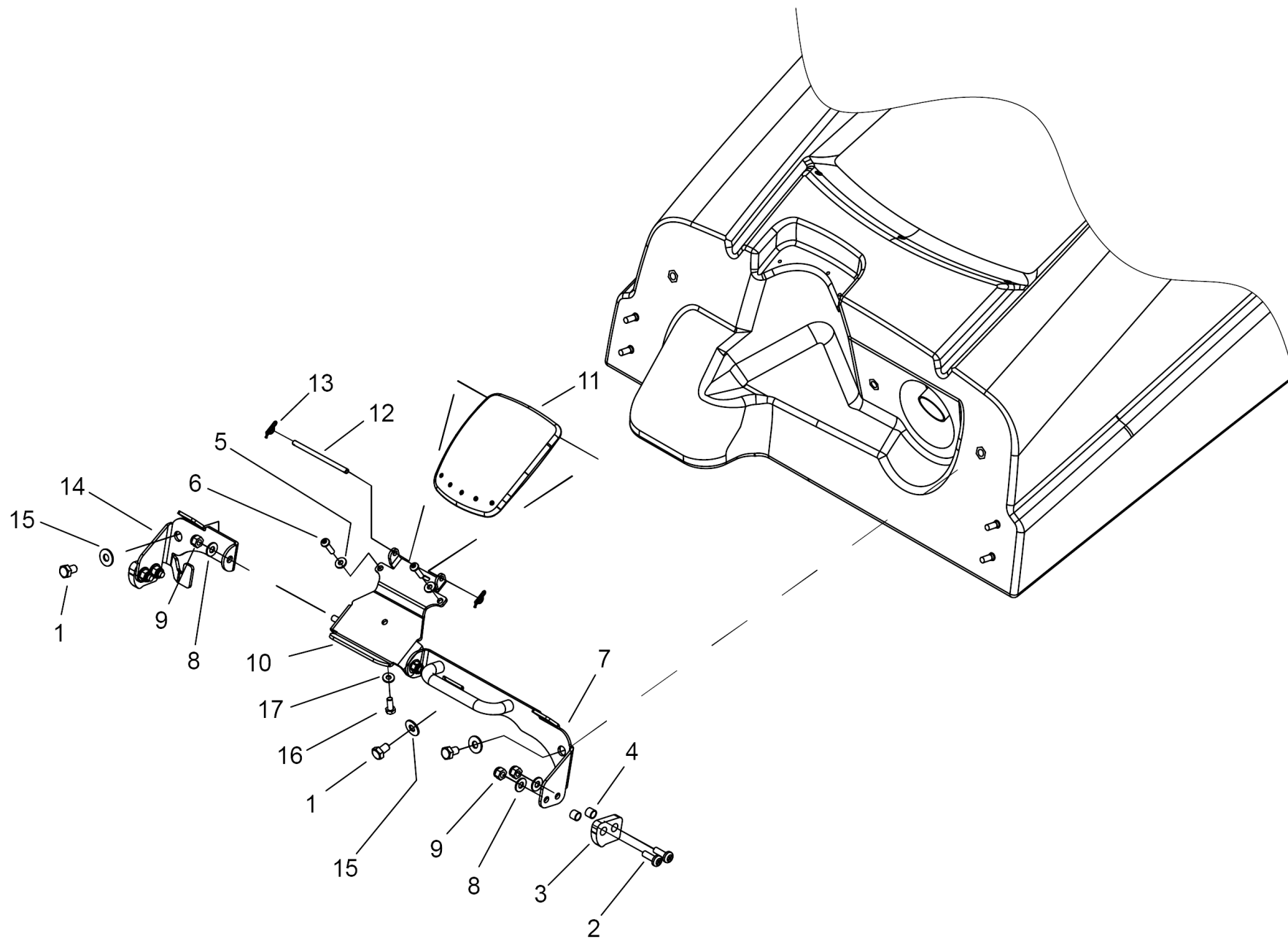
| POS | Article no. | Description                        | Quantity | Unit |
|-----|-------------|------------------------------------|----------|------|
| 1   | 8.627-678.0 | SCREW, 5/16-18 X .75 HHCS SS       | 8        | PC   |
| 2   | 8.601-067.0 | WASHER, 5/16 FLT SS                | 8        | PC   |
| 3   | 8.629-022.0 | PLATE, OPTION, CART LATCH          | 1        | PC   |
| 4   | 8.601-130.0 | GUIDE, BATTERY TRAY, RIGHT         | 1        | PC   |
| 5   | 8.601-128.0 | GUIDE, BATTERY TRAY, LEFT          | 1        | PC   |
| 6   | 8.627-815.0 | SHOULDER BOLT, 5/16 X 1L STL ZNPLT | 2        | PC   |
| 7   | 8.629-051.0 | WASHER, .315 THR                   | 4        | PC   |
| 8   | 8.629-283.0 | LATCH, TRAY STOP, RGT              | 1        | PC   |
| 9   | 8.629-282.0 | COVER, LATCH, CART                 | 1        | PC   |
| 10  | 8.629-050.0 | SPRING, COMP .48OD .88L .063W      | 2        | PC   |
| 11  | 8.629-284.0 | LATCH, TRAY STOP, LFT              | 1        | PC   |
| 12  | 8.622-678.0 | SPRING, EXT .44D X2.25L X.054W     | 1        | PC   |



## 280 EMERGENCY STOP OPTION

---

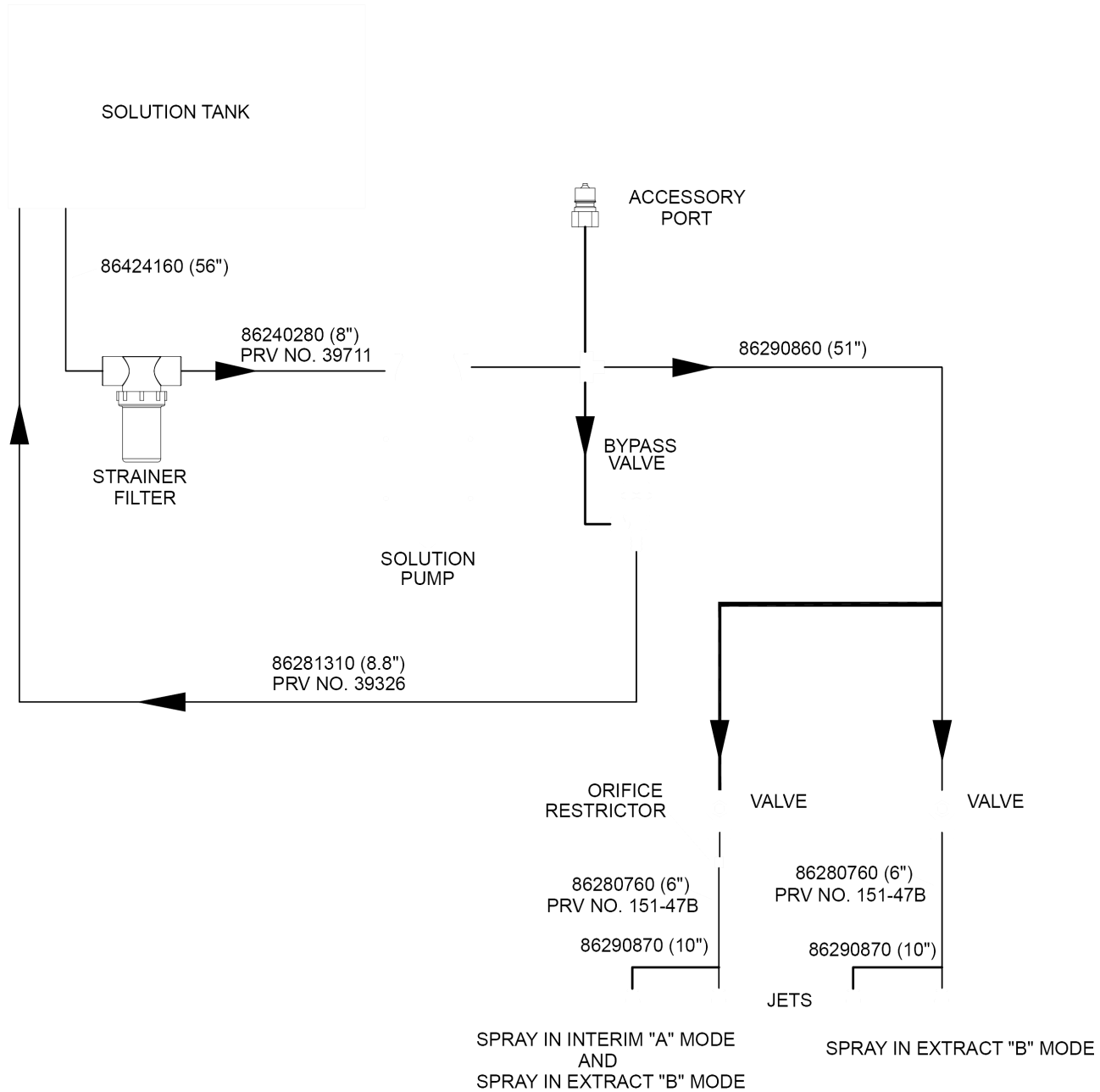
| <b>POS</b> | <b>Article no.</b> | <b>Description</b>             | <b>Quantity</b> | <b>Unit</b> |
|------------|--------------------|--------------------------------|-----------------|-------------|
| 1          | 8.600-718.0        | Switch EMERGENCY STOP          | 1               | PC          |
| 2          | 8.626-930.0        | WIRE, 16" RED/18 STRIP X STRIP | 1               | PC          |



290 RECOVERY TANK HANDLE

| POS | Article no. | Description                             | Quantity | Unit |
|-----|-------------|---|----------|------|
| 1   | 8.627-649.0 | SCREW, 5/16-18 X .625 HHCS SS           | 3        | PC   |
| 2   | 8.627-764.0 | SCREW, 1/4-20 X .75 PHTRHMS SS          | 4        | PC   |
| 3   | 8.629-073.0 | LATCH, FRONT COVER                      | 2        | PC   |
| 4   | 8.622-674.0 | SPACER, 3/8 X .265 X 1/4 NYL            | 4        | PC   |
| 5   | 8.629-425.0 | WASHER, .19 X .5 X .09 BLK              | 2        | PC   |
| 6   | 8.627-629.0 | SCREW, 10 X .75 PPNHMS HI LOW ST BLK ZN | 2        | PC   |
| 7   | 8.633-569.0 | ASSEMBLY, BRKT, FRONT, LEFT GRY         | 1        | PC   |
| 8   | 8.601-063.0 | WASHER, 1/4 SS                          | 6        | PC   |
| 9   | 8.627-187.0 | NUT, 1/4-20 HEXTHIN NYLOCK SS           | 6        | PC   |
| 10  | 8.601-399.0 | BRKT, COVER                             | 1        | PC   |
| 11  | 8.633-562.0 | COVER, ACCESSORY PORT, YLW              | 1        | PC   |
| 12  | 8.622-262.0 | Pin                                     | 1        | PC   |
| 13  | 8.600-865.0 | PIN, COTTER RING 1/4 X .041 X .844      | 2        | PC   |
| 14  | 8.629-180.0 | ASSEMBLY, BRKT, FRONT, RIGHT            | 1        | PC   |
| 15  | 8.601-067.0 | WASHER, 5/16 FLT SS                     | 3        | PC   |
| 16  | 8.629-085.0 | SCREW, M5 X 25 HHMS SS                  | 1        | PC   |
| 17  | 8.601-065.0 | WASHER, .203 X .562 X .040 FLT          | 1        | PC   |

300 HOSE DIAGRAM

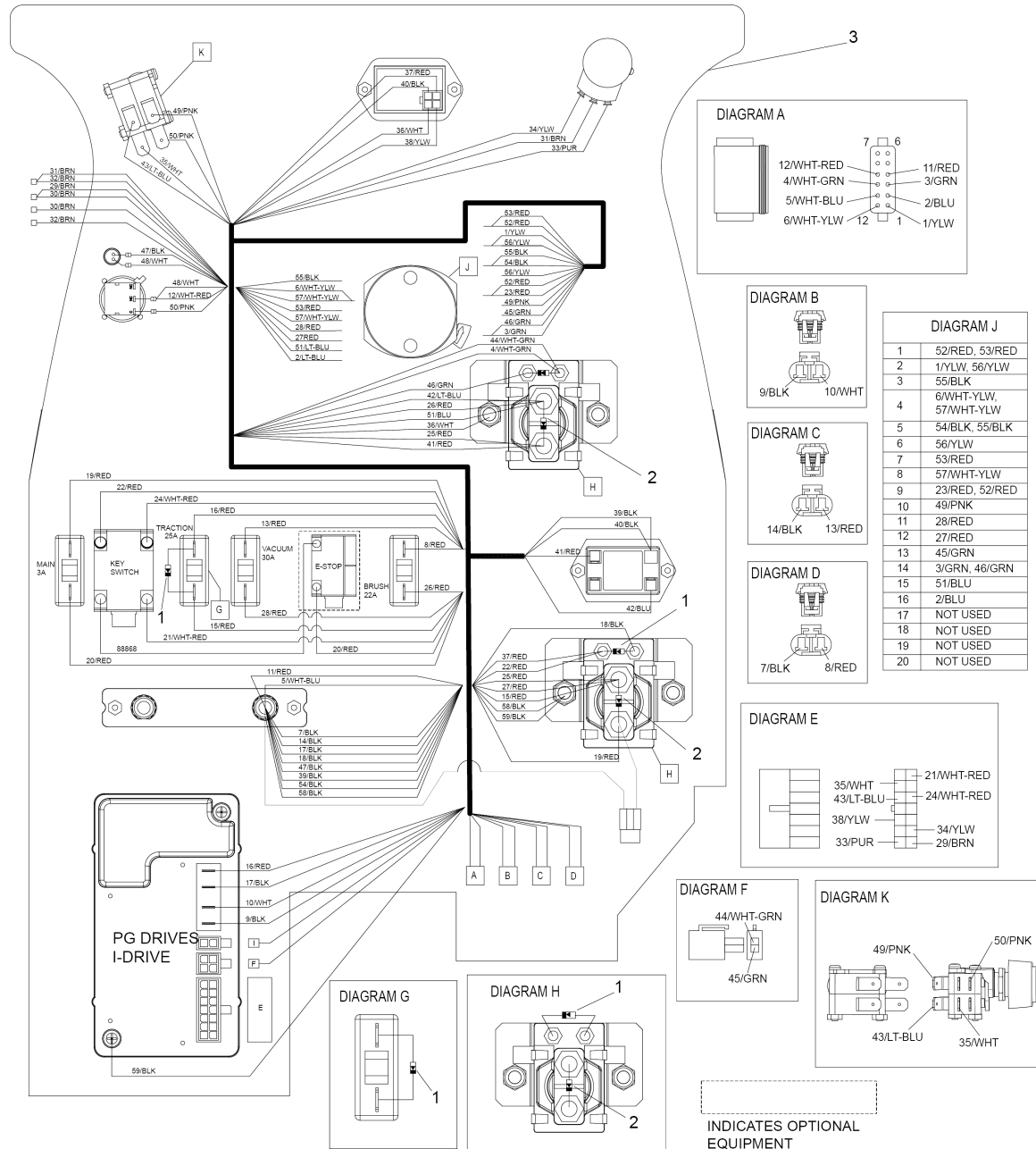


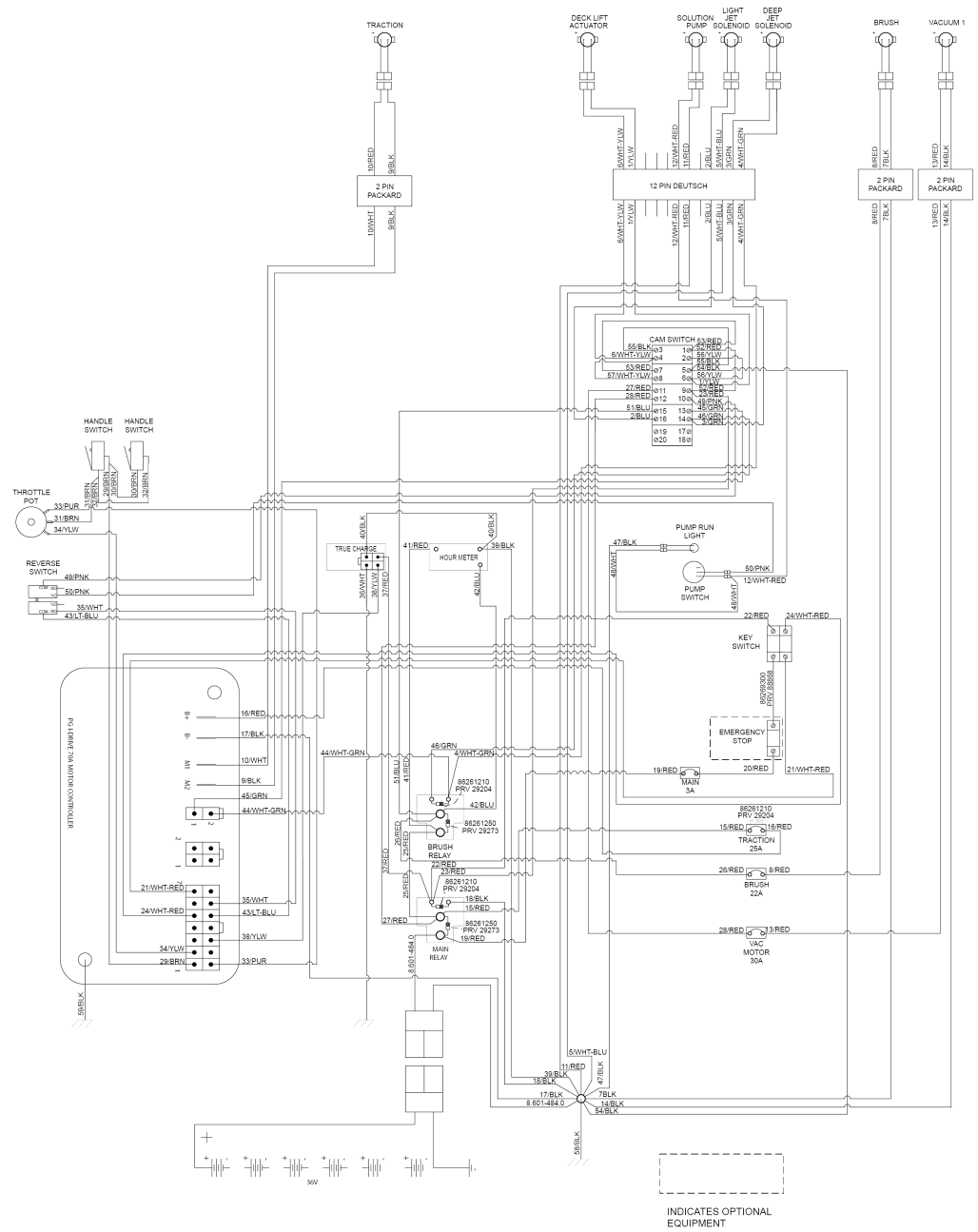
## 300 HOSE DIAGRAM

---

| POS | Article no. | Description                 | Quantity | Unit |
|-----|-------------|-----------------------------|----------|------|
| 1   | 8.642-416.0 | HOSE 1/2 WIREBOUND X 56"    | 1        | PC   |
| 2   | 8.624-028.0 | Hose 1/2ID WIRE BOUND X 8"  | 1        | PC   |
| 3   | 8.629-086.0 | HOSE, 1/4ID NYLOBRD X 51"   | 1        | PC   |
| 4   | 8.628-131.0 | Hose 3/8ID WIREBOUND X 8.8" | 1        | PC   |
| 5   | 8.628-076.0 | HOSE, 1/4ID NYLOBRD X 6"    | 1        | PC   |
| 6   | 8.629-087.0 | HOSE, 1/4ID NYLOBRD X 10"   | 1        | PC   |
| 7   | 8.628-076.0 | HOSE, 1/4ID NYLOBRD X 6"    | 1        | PC   |
| 8   | 8.629-087.0 | HOSE, 1/4ID NYLOBRD X 10"   | 1        | PC   |







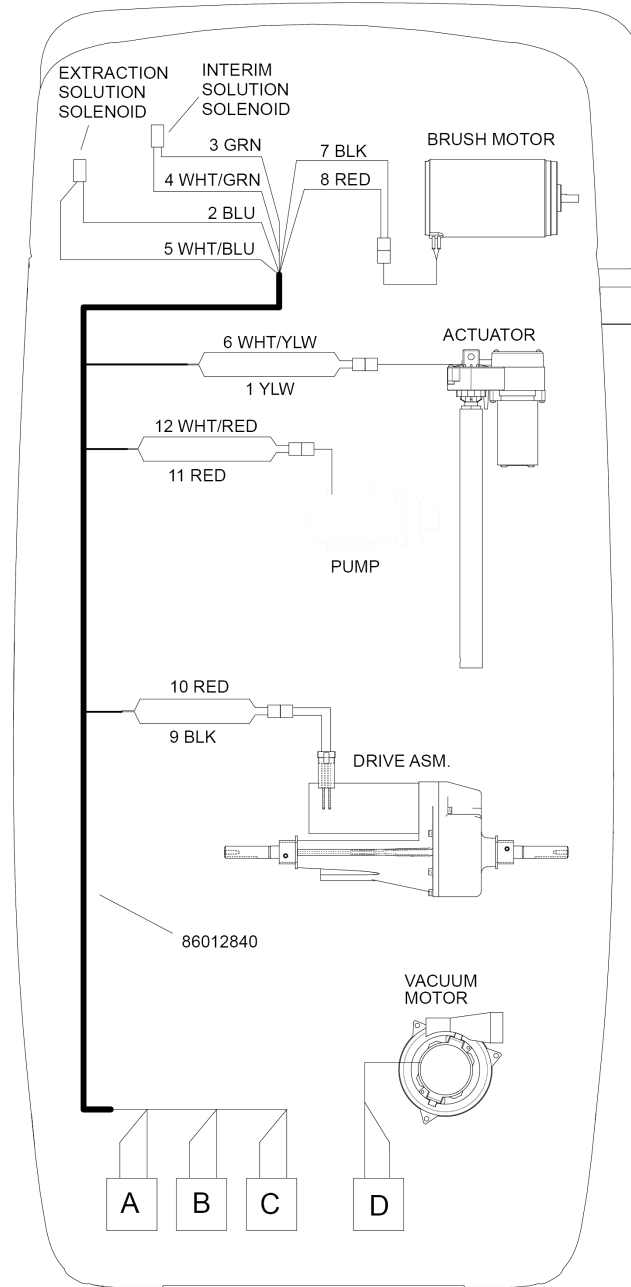


DIAGRAM A

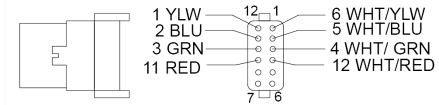


DIAGRAM B

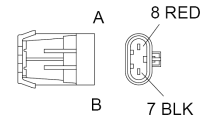


DIAGRAM C

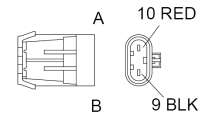
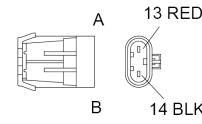


DIAGRAM D



## 310 Wiring

---

| <b>POS</b> | <b>Article no.</b> | <b>Description</b>             | <b>Quantity</b> | <b>Unit</b> |
|------------|--------------------|--------------------------------|-----------------|-------------|
| 1          | 8.626-120.0        | DIODE ASM, 76008 X 76042       | 3               | PC          |
| 2          | 7.777-999.0        | Stockpiling discontinued       | 2               | PC          |
| 3          | 8.601-321.0        | HARNESS, BASIC EXTRACTOR PANEL | 1               | PC          |

400 PKG SET, COMDU 3 X 130AH

---

| POS | Article no. | Description                       | Quantity | Unit |
|-----|-------------|-----------------------------------|----------|------|
| 10  | 8.622-840.0 | BATTERY, 12V, 130AH (30XHS)       | 3        | PC   |
| 20  | 8.632-972.0 | Cable battery                     | 2        | PC   |
| 30  | 8.641-488.0 | CHRGR, 36V 21A SB50 ALG 62        | 1        | PC   |
| 40  | 8.601-306.0 | BATT, CBL, ASM 2X24, 50A 6GA      | 1        | PC   |
| 50  | 8.639-532.0 | TRAY BATTERY LINER, COM DUO BASIC | 1        | PC   |