

Spare parts list

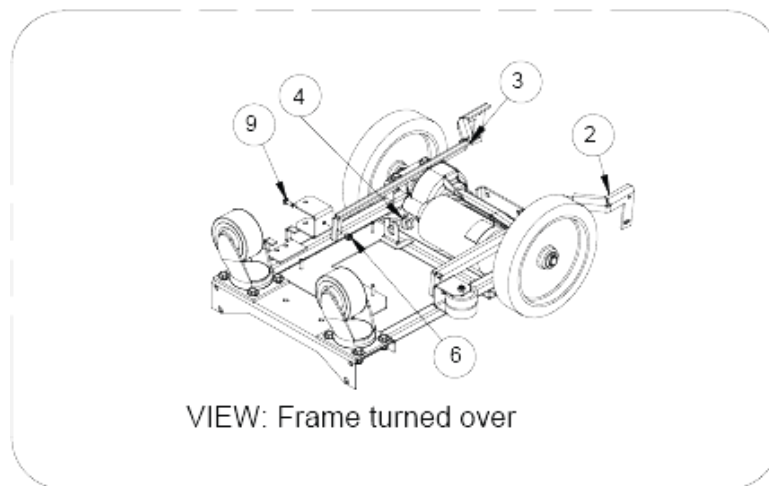
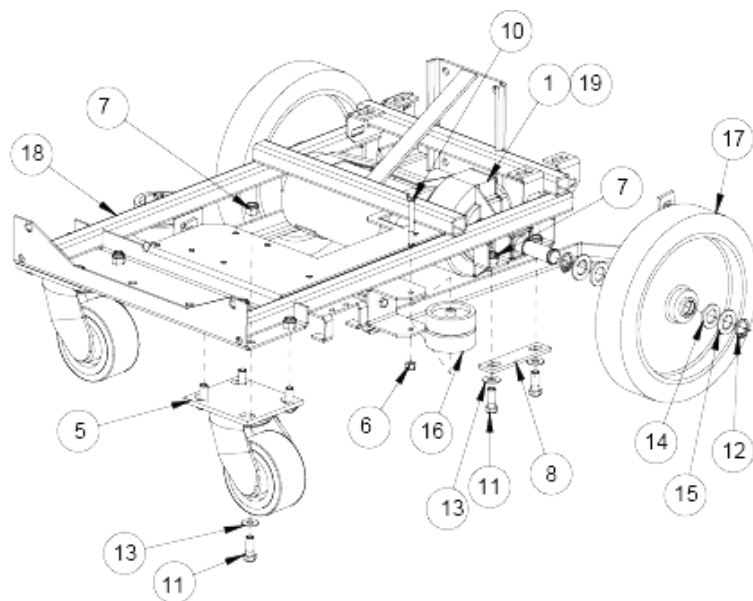
(1.008-605.0) BRC 46/76 W

Table of contents

| | |
|----------------------------------|----|
| BRC 46/76 W (1.008-605.0) | 3 |
| 9020 FRAME | 4 |
| 9030 PUMP | 6 |
| 9040 BRUSH | 8 |
| 9050 MANIFOLD AND SOLENOID | 10 |
| 9060 VACUUM SHOE | 12 |
| 9070 LIFT LEVER AND LOWER TOWER | 14 |
| 9080 UPPER TOWER | 16 |
| 9090 CONTROL PANEL | 18 |
| 9100 SOLUTION TANK | 20 |
| 9110 RECOVERY TANK | 22 |
| 9120 WIRING DIAGRAM COMMODORE 20 | 24 |
| 9130 Serial number BRC 46/76 W | 25 |

BRC 46/76 W (1.008-605.0)

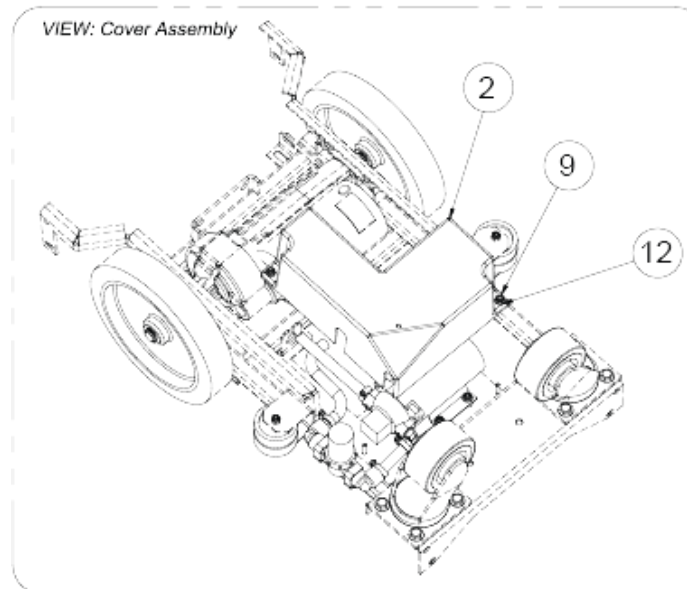
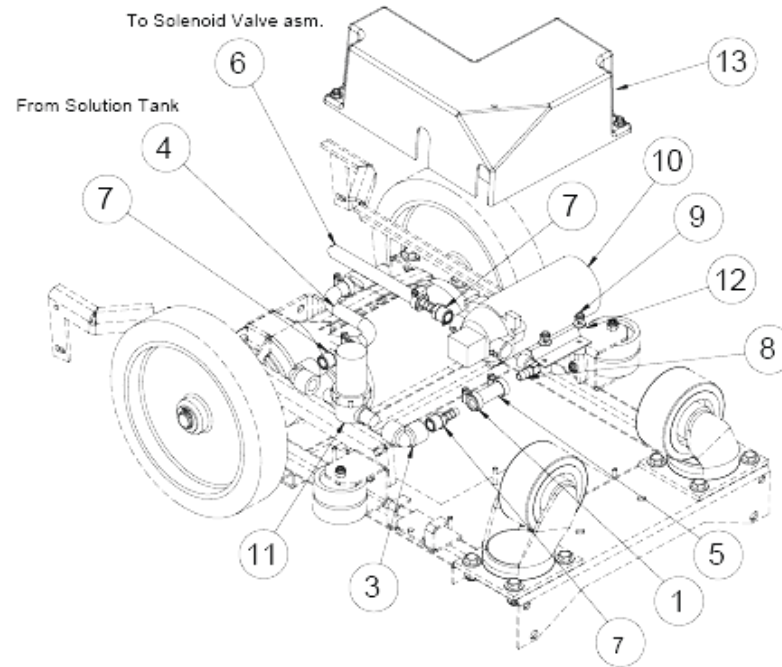
| POS | Description | Quantity | Unit |
|------|-----------------------------|----------|------|
| 9020 | FRAME | 1 | PC |
| 9030 | PUMP | 1 | PC |
| 9040 | BRUSH | 1 | PC |
| 9050 | MANIFOLD AND SOLENOID | 1 | PC |
| 9060 | VACUUM SHOE | 1 | PC |
| 9070 | LIFT LEVER AND LOWER TOWER | 1 | PC |
| 9080 | UPPER TOWER | 1 | PC |
| 9090 | CONTROL PANEL | 1 | PC |
| 9100 | SOLUTION TANK | 1 | PC |
| 9110 | RECOVERY TANK | 1 | PC |
| 9120 | WIRING DIAGRAM COMMODORE 20 | 1 | PC |
| 9130 | Serial number BRC 46/76 W | 1 | PC |



NOTE: To access transaxle remove:
86091320, 86091330, 86006740 (4),
86005770 (4) AND 86249400 (2)

9020 FRAME

| POS | Article no. | Description | Quantity | Unit |
|-----|-------------|---|----------|------|
| - | 8.621-616.0 | BRUSH SET, TRANSAXLE 05120 CCL | 1 | PC |
| 1 | 8.625-776.0 | TRANSAXLE, 90VDC .13HP | 1 | PC |
| 2 | 8.609-132.0 | ARM, BRUSH HOUSING RIGHT | 1 | PC |
| 3 | 8.609-133.0 | ARM, BRUSH HOUSING LEFT | 1 | PC |
| 4 | 8.625-605.0 | STRAIN RELIEF, 18/23 STR .75 | 1 | PC |
| 5 | 8.600-231.0 | CASTER, 4DIA X 2 W X 3.56 R | 2 | PC |
| 6 | 7.777-999.0 | Stockpiling discontinued | 4 | PC |
| 7 | 8.600-577.0 | NUT, 3/8-16 HEX NYLOCK STL GR2 ZNPLT | 4 | PC |
| 8 | 8.624-940.0 | PLATE, DRIVE AXLE | 2 | PC |
| 9 | 8.627-378.0 | SCREW, 1/4-20 X .75 HHCS SS NP | 2 | PC |
| 10 | 8.627-380.0 | SCREW, 1/4-20 X 2.5 HHCS SS | 2 | PC |
| 11 | 8.600-674.0 | SCREW, 3/8-16 X 1 HHCS STL GR5 ZNPLT NP | 12 | PC |
| 12 | 8.600-871.0 | WASHER, 3/4 HVYSPL | 4 | PC |
| 13 | 8.627-891.0 | WASHER, 3/8 SS | 4 | PC |
| 14 | 8.627-942.0 | WASHER, .765 X 1.25 X .08 FLT NYL | 4 | PC |
| 15 | 8.627-953.0 | WASHER, .765 X 1.312 X .09 SS | 4 | PC |
| 16 | 8.625-969.0 | WHEEL, CMD VAC SHOE | 4 | PC |
| 17 | 8.625-983.0 | WHEEL ASM, CMD20 | 2 | PC |
| 18 | 8.607-596.0 | FRAME, WELDMENT CMD20 | 1 | PC |
| 19 | 8.627-088.0 | NUT, 3/8-16 SERFLG STL ZNPLT | 8 | PC |

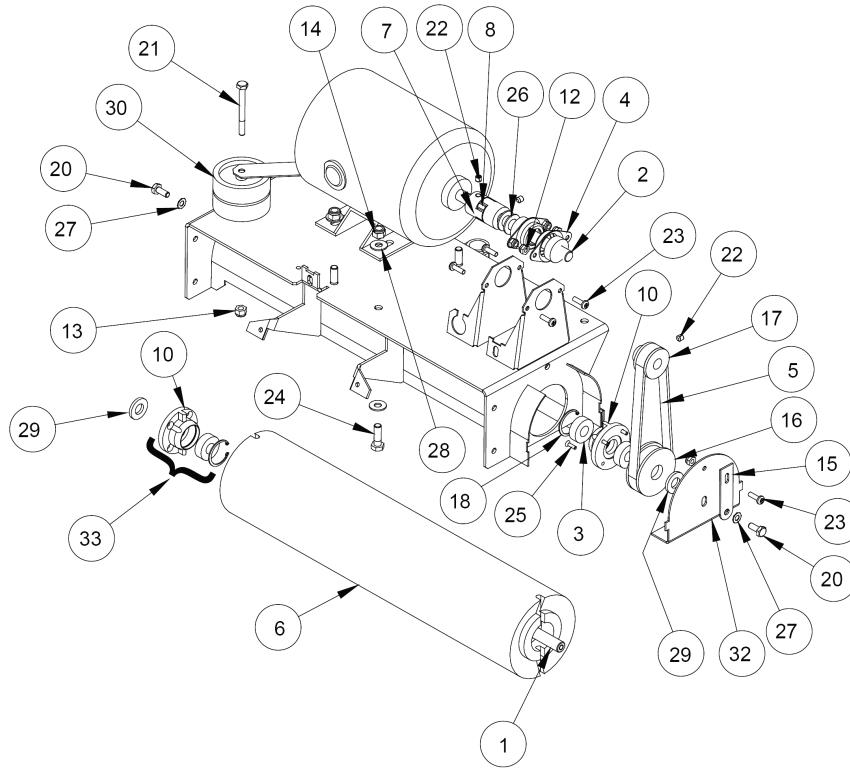


NOTE: Unscrew top bowl of strainer ASM to change filter

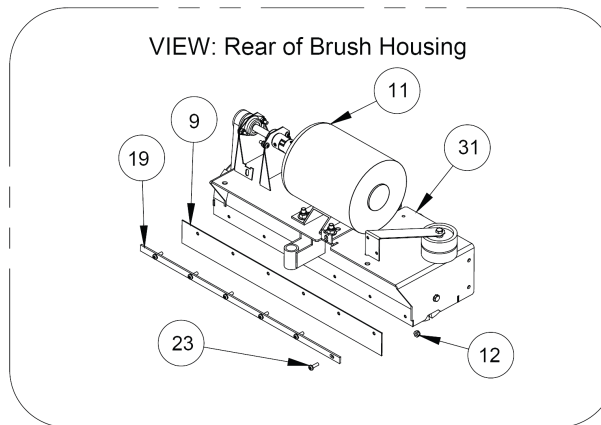
NOTE: To access pump ASM remove item's 8.606-375.0, 8.800-564.0 (2), 8.601-085.0 (2)

9030 PUMP

| POS | Article no. | Description | Quantity | Unit |
|-----|-------------|-------------------------------------|----------|------|
| 1 | 8.623-315.0 | CLAMP, 3/8 HOSE (D-SLOT) | 5 | PC |
| 2 | 8.639-366.0 | COVER, PUMP CMD20 | 1 | PC |
| 3 | 8.623-545.0 | Elbow | 2 | PC |
| 4 | 8.628-115.0 | HOSE, 3/8 ID WIRE BOUND X 7" | 1 | PC |
| 5 | 8.628-168.0 | Hose 3/8ID NYLOBRD X 2" | 1 | PC |
| 6 | 8.628-178.0 | HOSE, 3/8ID NYLOBRD X 33" | 1 | PC |
| 7 | 7.777-999.0 | Stockpiling discontinued | 3 | PC |
| 8 | 8.619-761.0 | HOSEBARB, 3/8MPTX3/8 90D DL | 1 | PC |
| 9 | 8.600-564.0 | NUT, 10-32 HEX NYLOCK STL GR2 ZNPLT | 6 | PC |
| 10 | 8.625-100.0 | PUMP, 115V 100PSI BYPASS | 1 | PC |
| 11 | 8.600-794.0 | Strainer 3/8 UPT 100 MESH DEEP | 1 | PC |
| 12 | 8.601-065.0 | WASHER, .203 X .562 X .040 FLT | 6 | PC |
| 13 | 8.639-366.0 | COVER, PUMP CMD20 | 1 | PC |

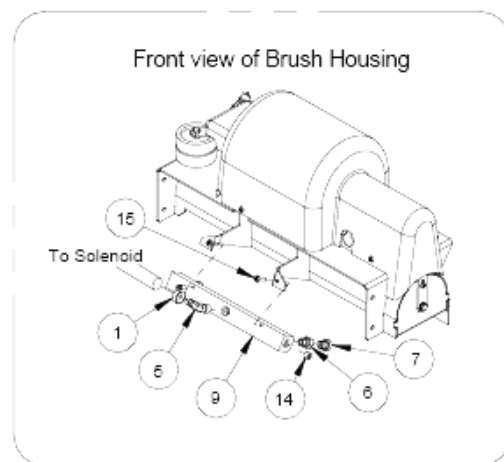
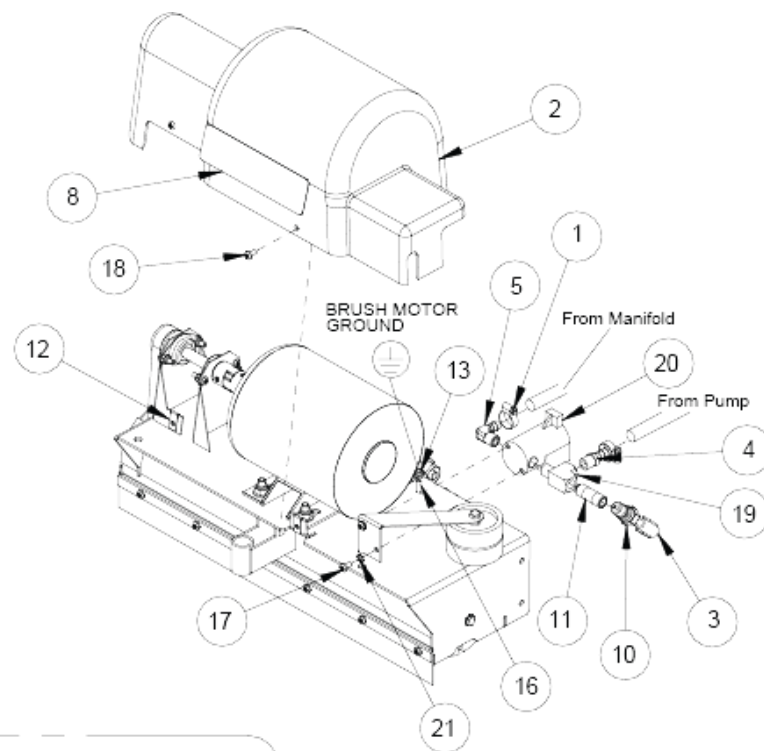


NOTE: To access Brush/Pully ASM remove:
 8.627-589.0, 8.623-395.0 (2), 8.607-863.0 (2)



9040 BRUSH

| POS | Article no. | Description | Quantity | Unit | Remark |
|-----|-------------|--|----------|------|----------------------------|
| 1 | 8.622-763.0 | AXLE, .5 X 19.5 X 1/4-20 | 1 | PC | |
| 2 | 8.622-764.0 | AXLE, .5 X 4.88 W/FLATS | 1 | PC | |
| 3 | 8.631-905.0 | BEARING, .500 X 1.125 X .313 BALL ZZ | 5 | PC | QTY 1 included in 86025320 |
| 4 | 7.777-999.0 | Stockpiling discontinued | 2 | PC | |
| 5 | 8.622-942.0 | BELT, TIMING .375P 16.5PL .5W | 1 | PC | |
| 6 | 8.600-112.0 | Brush | 1 | PC | |
| 7 | 8.623-454.0 | COUPLER, 1/2 JAW | 2 | PC | |
| 8 | 7.777-999.0 | Stockpiling discontinued | 1 | PC | |
| 9 | 8.623-859.0 | GUARD, SPLASH | 1 | PC | |
| 10 | 8.624-121.0 | IDLER, BRUSH QUICK-CHG END | 2 | PC | QTY 1 included in 86025320 |
| 11 | 8.624-707.0 | MOTOR, 115V 1/3 HP W/0 T/0 | 1 | PC | |
| 12 | 8.600-564.0 | NUT, 10-32 HEX NYLOCK STL GR2 ZNPLT | 11 | PC | |
| 13 | 7.777-999.0 | Stockpiling discontinued | 1 | PC | |
| 14 | 7.777-999.0 | Stockpiling discontinued | 4 | PC | |
| 15 | 8.608-146.0 | PLATE, BELT ADJUSTMENT | 1 | PC | |
| 16 | 8.625-066.0 | PULLEY, TIMING 2.029PDX.75P | 1 | PC | |
| 17 | 8.625-067.0 | PULLEY, TIMING .375P 10T .5ID | 1 | PC | |
| 18 | 8.627-276.0 | RING, 1.12 INT. SNAP | 2 | PC | QTY 1 included in 86025320 |
| 19 | 8.608-619.0 | RETAINER, SPLASH GUARD | 1 | PC | |
| 20 | 8.627-589.0 | SCREW, 1/4-20 X .625 HHCS STL GR5 ZNPLT | 2 | PC | |
| 21 | 8.627-380.0 | SCREW, 1/4-20 X 2.5 HHCS SS | 1 | PC | |
| 22 | 8.600-661.0 | SCREW, 1/4-20 X .25 SCHSET KCP BLKOX | 3 | PC | |
| 23 | 8.627-427.0 | SCREW, 10-32 X .625 PHPNHMS STL ZNPLT | 11 | PC | |
| 24 | 8.600-675.0 | SCREW, 5/16-18 X 1 HHCS STL GR5 ZNPLT NP | 4 | PC | |
| 25 | 8.627-538.0 | SCREW, 6-32 X .5 PHFLHMS STL ZNPLT | 4 | PC | |
| 26 | 8.627-885.0 | WASHER, .506 X .94 X .06 NYL | 2 | PC | |
| 27 | 7.777-999.0 | Stockpiling discontinued | 2 | PC | |
| 28 | 8.601-067.0 | WASHER, 5/16 FLT SS | 8 | PC | |
| 29 | 8.627-958.0 | WASHER, 1/4 FLT NYL | 2 | PC | |
| 30 | 8.625-969.0 | WHEEL, CMD VAC SHOE | 2 | PC | |
| 31 | 8.609-040.0 | WELDMENT, BRUSH HOUSING | 1 | PC | |
| 32 | 8.607-863.0 | PLATE, BRUSH HOUSING END | 1 | PC | |
| 33 | 8.602-532.0 | ISLER ASM, BRUSH CMD20 | 1 | PC | Service Only |

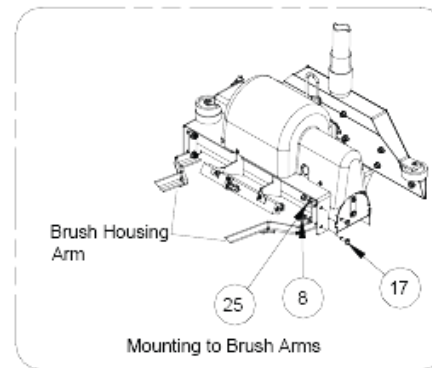
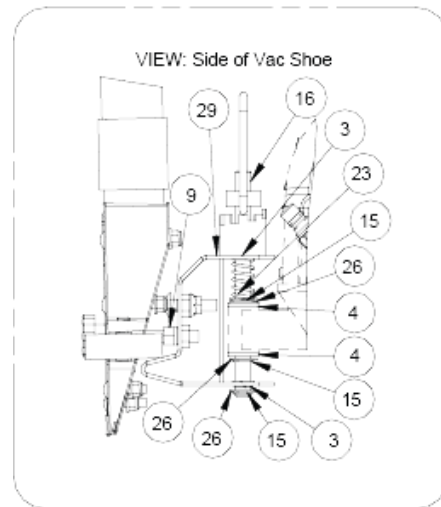
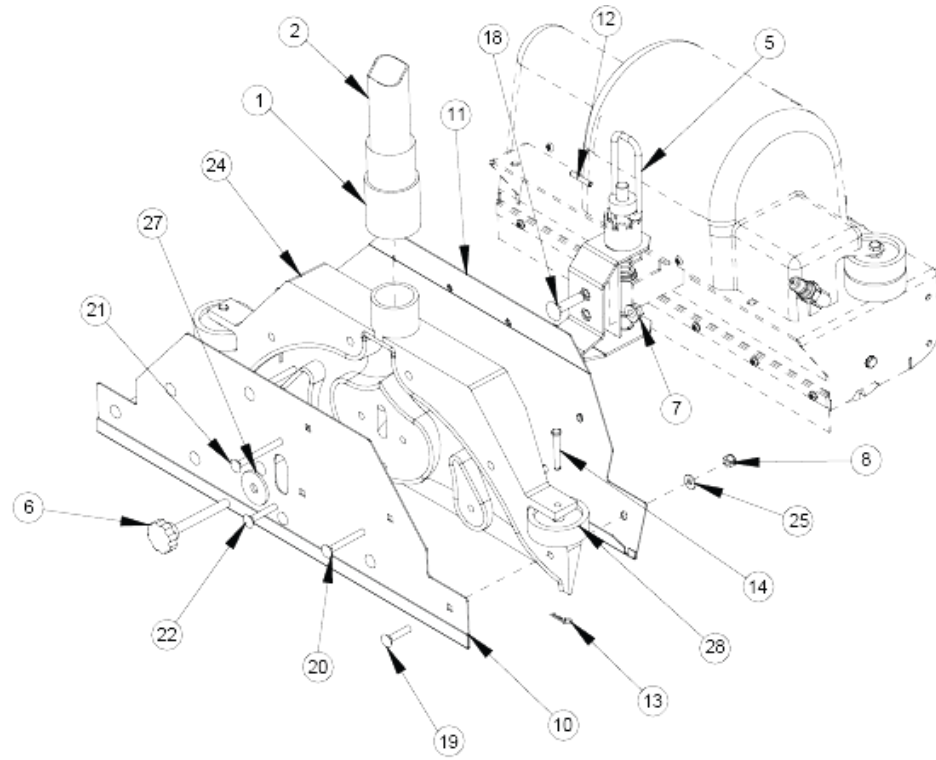


NOTE: To access Solenoid, remove 8.639-365.0, 8.600-687.0 (4)

NOTE: To access Manifold ASM, remove 8.600-660.0 (2)

9050 MANIFOLD AND SOLENOID

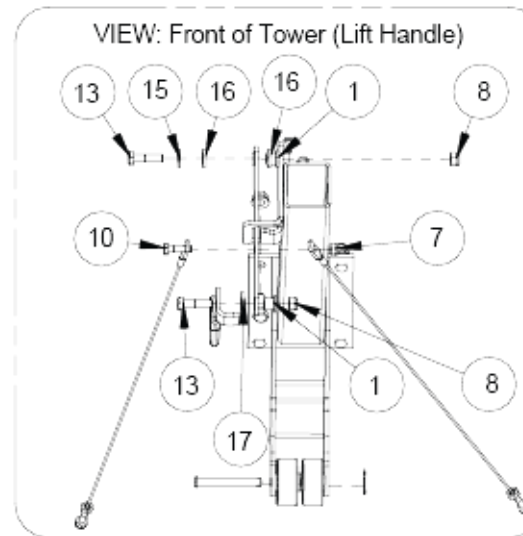
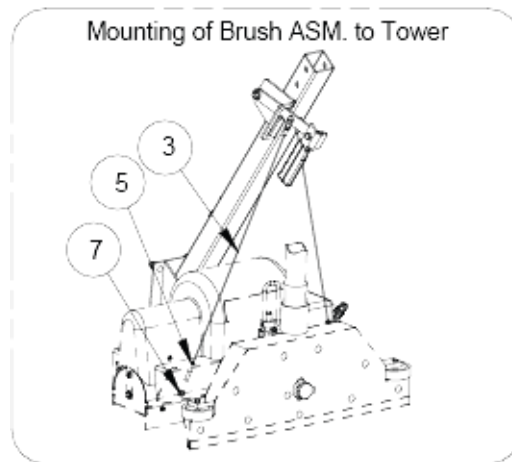
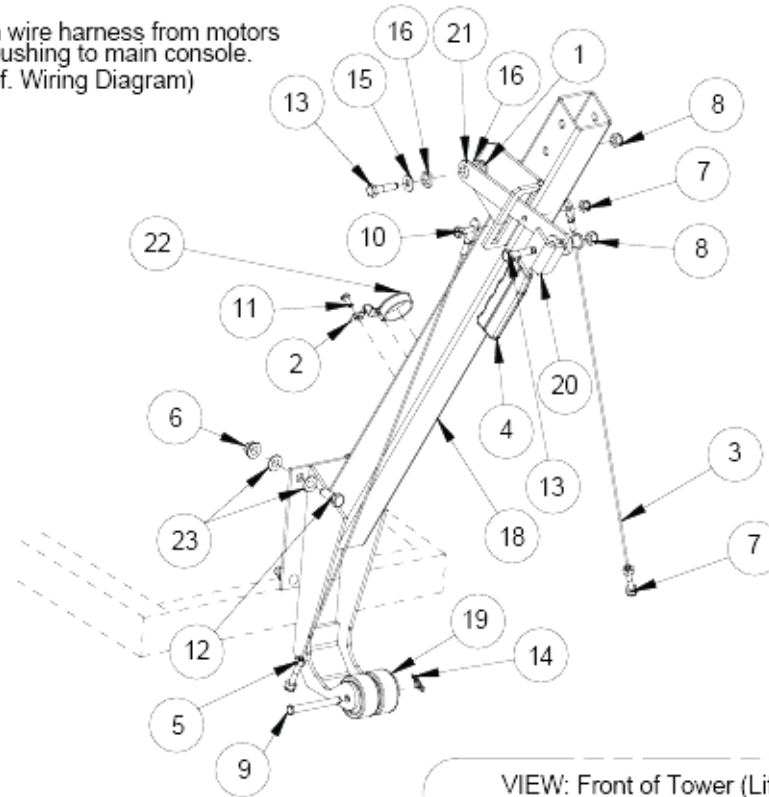
| POS | Article no. | Description | Quantity | Unit |
|-----|-------------|---------------------------------------|----------|------|
| 1 | 8.623-315.0 | CLAMP, 3/8 HOSE (D-SLOT) | 3 | PC |
| 2 | 8.639-365.0 | COVER, BRUSH MOTOR | 1 | PC |
| 3 | 7.777-999.0 | Stockpiling discontinued | 1 | PC |
| 4 | 7.777-999.0 | Stockpiling discontinued | 1 | PC |
| 5 | 8.619-760.0 | HOSEBARB, 1/4MPT X 3/8 90D DL | 2 | PC |
| 6 | 8.600-457.0 | JET BODY, MINI PROMAX BODY | 2 | PC |
| 7 | 8.601-320.0 | JET, MINI PROMAX 11004 | 2 | PC |
| 8 | 8.639-695.0 | LABEL, ADJ INSTRUCTION | 1 | PC |
| 9 | 7.777-999.0 | Stockpiling discontinued | 1 | PC |
| 10 | 8.600-558.0 | Nipple 1/4 FPT QD | 1 | PC |
| 11 | 7.777-999.0 | Stockpiling discontinued | 1 | PC |
| 12 | 8.627-086.0 | NUT, 10-24 TYPEU BLK | 4 | PC |
| 13 | 8.600-564.0 | NUT, 10-32 HEX NYLOCK STL GR2 ZNPLT | 1 | PC |
| 14 | 7.777-999.0 | Stockpiling discontinued | 2 | PC |
| 15 | 8.600-660.0 | SCREW, 10-16 X .75 PHPNH HL SS | 2 | PC |
| 16 | 8.627-427.0 | SCREW, 10-32 X .625 PHPNHMS STL ZNPLT | 1 | PC |
| 17 | 8.627-429.0 | SCREW, 10-32 X .375 PHPNHMS SS | 2 | PC |
| 18 | 8.600-687.0 | SCREW, 10 X .5 PHPNHMSMS TYPEB BLK | 4 | PC |
| 19 | 8.619-776.0 | TEE, 1/4 STREET | 1 | PC |
| 20 | 8.625-887.0 | VALVE, 120V 110 PSI SOLENOID | 1 | PC |
| 21 | 8.601-064.0 | Washer #10 LOCK EXT STAR SS | 3 | PC |



9060 VACUUM SHOE

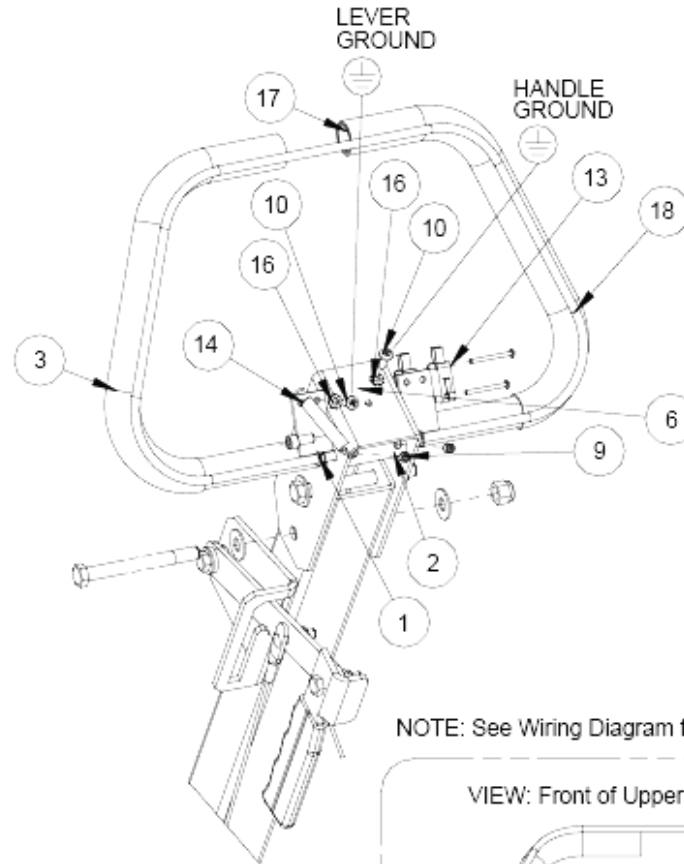
| POS | Article no. | Description | Quantity | Unit |
|-----|-------------|--|----------|------|
| 1 | 8.600-310.0 | CUFF,BLK 1.9ID VAC HOSE X 4.07 | 1 | PC |
| 2 | 8.600-430.0 | Hose 1.5 BLK VAC X 30" | 1 | PC |
| 3 | 8.622-858.0 | BUSHING, 1/2 FLG NYL | 2 | PC |
| 4 | 8.623-130.0 | Bushing .502 X .753 X .75 FLG BRZ | 2 | PC |
| 5 | 8.609-577.0 | WELDMENT, HEIGHT ADJ ROD | 1 | PC |
| 6 | 8.624-207.0 | KNOB, 1.38 X 3/8-16 X 3.0 | 1 | PC |
| 7 | 8.627-088.0 | NUT, 3/8-16 SERFLG STL ZNPLT | 1 | PC |
| 8 | 7.777-999.0 | Stockpiling discontinued | 15 | PC |
| 9 | 8.600-577.0 | NUT, 3/8-16 HEX NYLOCK STL GR2 ZNPLT | 1 | PC |
| 10 | 8.608-098.0 | PLATE, VAC | 1 | PC |
| 11 | 8.608-100.0 | PLATE, VAC TRAP | 1 | PC |
| 12 | 8.627-237.0 | PIN, ROLL 3/16 X 1.125 STL ZNPLT | 1 | PC |
| 13 | 8.627-239.0 | PIN, COTTER HAIR .059 X 1L STL ZNPLT | 2 | PC |
| 14 | 8.600-625.0 | Bolt | 2 | PC |
| 15 | 8.600-625.0 | Bolt | 3 | PC |
| 16 | 8.600-638.0 | Rod HANDLE ADJUSTMENT | 1 | PC |
| 17 | 8.627-378.0 | SCREW, 1/4-20 X .75 HHCS SS NP | 4 | PC |
| 18 | 8.627-628.0 | SCREW, 3/8-16 X 1.5 CARR STL GRA ZNPLT | 1 | PC |
| 19 | 8.627-633.0 | SCREW, 1/4-20 X 1.25 CARR | 5 | PC |
| 20 | 8.627-634.0 | SCREW, 1/4-20 X 2 CARR LCSTL BLK ZNPLT | 2 | PC |
| 21 | 8.627-635.0 | SCREW, 1/4-20 X 2.5 CARR LCSTL BLK ZNPLT | 2 | PC |
| 22 | 8.627-636.0 | SCREW, 1/4-20 X 1.5 CARR LCSTL BLK ZNPLT | 2 | PC |
| 23 | 8.625-529.0 | SPRING, COMP .56IDX.72ODX.08W | 1 | PC |
| 24 | 8.625-862.0 | VAC SHOE CENTER | 1 | PC |
| 25 | 8.601-063.0 | WASHER, 1/4 SS | 15 | PC |
| 26 | 8.627-932.0 | WASHER, .515 X .875 X .063 FLT SS | 4 | PC |
| 27 | 8.627-949.0 | WASHER, 3/8 X 1.50 X .12 FNDR STL ZNPLT | 4 | PC |
| 28 | 8.625-969.0 | WHEEL, CMD VAC SHOE | 2 | PC |
| 29 | 8.609-152.0 | BKT, VACSHOE ADJUST WELDMENT | 1 | PC |

NOTE: Main wire harness from motors
through bushing to main console.
(Ref. Wiring Diagram)

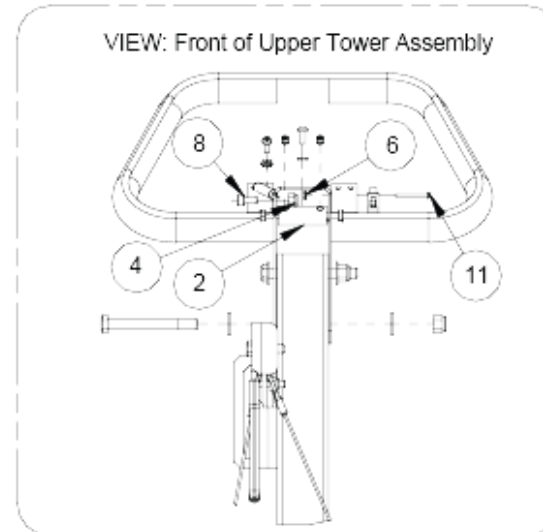
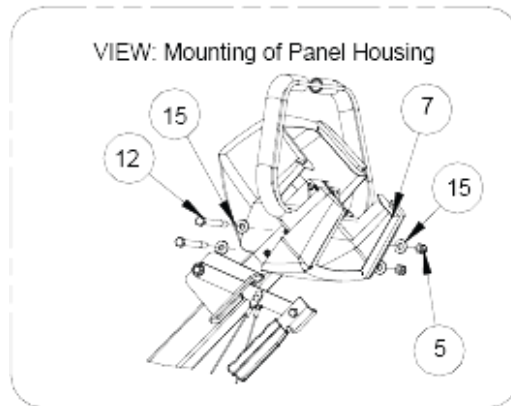


9070 LIFT LEVER AND LOWER TOWER

| POS | Article no. | Description | Quantity | Unit |
|-----|-------------|--|----------|------|
| 1 | 8.622-884.0 | BUSHING, .314 X .502 X .5 FLG | 2 | PC |
| 2 | 8.607-526.0 | CLAMP, CORD | 1 | PC |
| 3 | 8.623-179.0 | CABLE,25X3/32 1/4EYE X 1/4STUD | 2 | PC |
| 4 | 8.633-600.0 | GRIP, 3/16X 1.0, YLW | 1 | PC |
| 5 | 8.627-077.0 | Nut | 2 | PC |
| 6 | 8.627-088.0 | NUT, 3/8-16 SERFLG STL ZNPLT | 4 | PC |
| 7 | 7.777-999.0 | Stockpiling discontinued | 3 | PC |
| 8 | 7.777-999.0 | Stockpiling discontinued | 2 | PC |
| 9 | 8.627-246.0 | PIN, CLEVIS 5/16 X 3 STL ZNPLT | 1 | PC |
| 10 | 8.627-381.0 | SCREW, 1/4-20 X 1 HHCS SS | 1 | PC |
| 11 | 8.627-435.0 | SCREW, 10-24 X .5 PHPNHTC | 2 | PC |
| 12 | 8.600-674.0 | SCREW, 3/8-16 X 1 HHCS STL GR5 ZNPLT NP | 4 | PC |
| 13 | 8.627-491.0 | SCREW, 5/16-18 X 1.25 HHCS STL GR5 ZNPLT | 2 | PC |
| 14 | 8.600-866.0 | Cotter 5/16" RING | 1 | PC |
| 15 | 8.601-067.0 | WASHER, 5/16 FLT SS | 1 | PC |
| 16 | 8.627-935.0 | WASHER, 1/2 X .771 X .013 WV | 2 | PC |
| 17 | 8.627-958.0 | WASHER, 1/4 FLT NYL | 1 | PC |
| 18 | 8.609-564.0 | WELDMENT, POST LOWER CONTROL | 1 | PC |
| 19 | 8.625-981.0 | WHEEL, 2ODX.31IDX.88W PLASTIC | 2 | PC |
| 20 | 8.606-910.0 | BRKT, LIFT LEVER HANDLE | 1 | PC |
| 21 | 8.606-911.0 | BRKT, LIFT LEVER BASE | 1 | PC |
| 22 | 8.623-121.0 | BUSHING, 1.5 HOLE SNAP | 1 | PC |
| 23 | 8.627-901.0 | WASHER, 3/8 X .67 X .032 EXXTLK SS | 8 | PC |

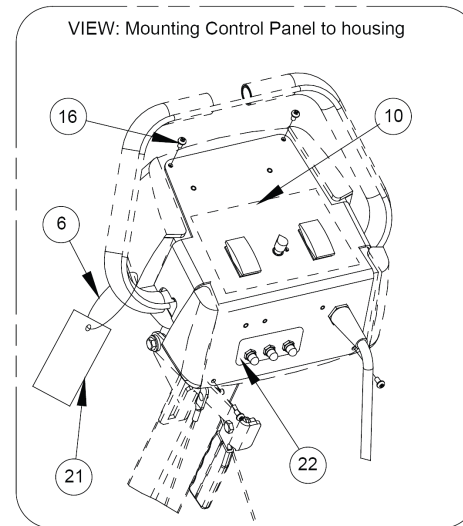
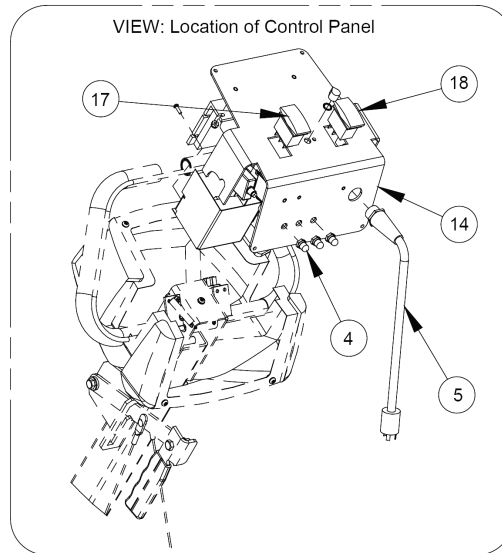
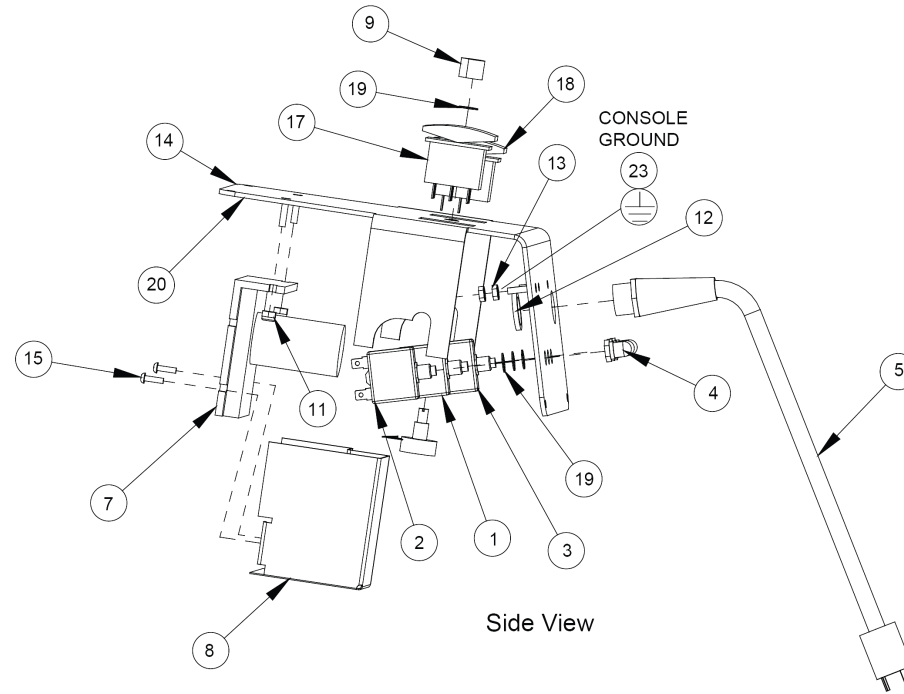


NOTE: See Wiring Diagram for electrical wiring layout.



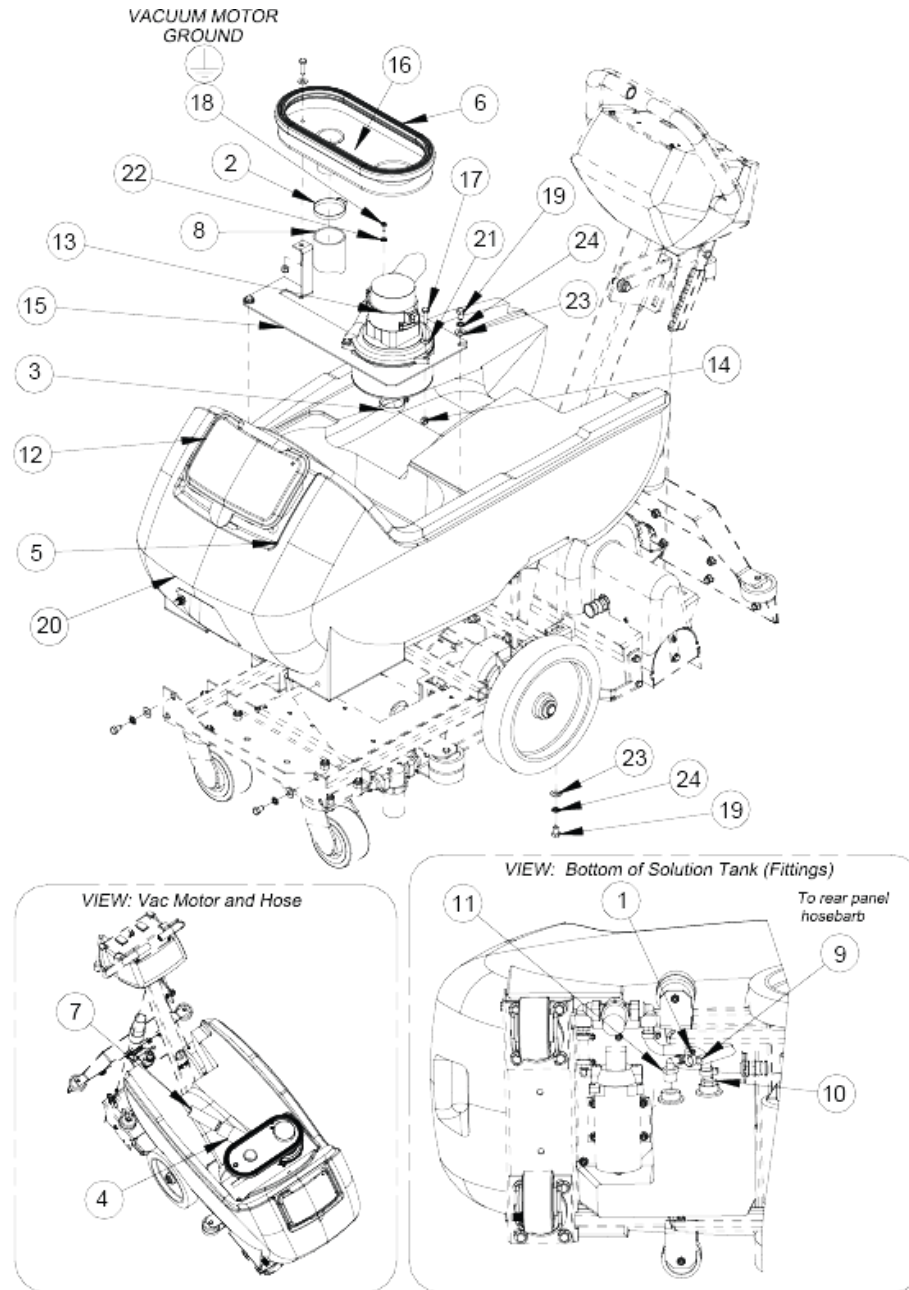
9080 UPPER TOWER

| POS | Article no. | Description | Quantity | Unit |
|-----|-------------|--|----------|------|
| 1 | 8.622-886.0 | BUSHING, 1/4 FLG NYL | 2 | PC |
| 2 | 8.623-368.0 | COLLAR, .75ODX.281IDX1.875 | 1 | PC |
| 3 | 8.623-827.0 | GRIP, HANDLE X 13" | 2 | PC |
| 4 | 7.777-999.0 | Stockpiling discontinued | 1 | PC |
| 5 | 8.600-577.0 | NUT, 3/8-16 HEX NYLOCK STL GR2 ZNPLT | 2 | PC |
| 6 | 8.627-128.0 | Nut 4-40 HEXSTRW STL ZNPLT | 2 | PC |
| 7 | 8.606-284.0 | PANEL, CMD20 CONTROL | 1 | PC |
| 8 | 8.627-411.0 | SCREW, 1/4-20 X .5 SCHCS SS | 1 | PC |
| 9 | 8.600-661.0 | SCREW, 1/4-20 X .25 SCHSET KCP BLKOX | 2 | PC |
| 10 | 8.627-435.0 | SCREW, 10-24 X .5 PHPNHTC | 2 | PC |
| 11 | 8.627-525.0 | SCREW, 4-40 X 1.25 PHPNHMS STL ZNPLT | 2 | PC |
| 12 | 8.627-586.0 | SCREW, 3/8-16 X 3.5 HHCS STL GR5 ZNPLT | 2 | PC |
| 13 | 8.600-716.0 | Switch 10A ROLLER MINI | 2 | PC |
| 14 | 8.625-502.0 | SPRING, EXT .36D X1.50L X.058W | 1 | PC |
| 15 | 8.627-891.0 | WASHER, 3/8 SS | 4 | PC |
| 16 | 8.601-064.0 | Washer #10 LOCK EXT STAR SS | 2 | PC |
| 17 | 8.609-280.0 | HANDLE, CMD20 WELDMENT | 1 | PC |
| 18 | 8.609-568.0 | WELDMENT, PROPEL CONTROL | 1 | PC |



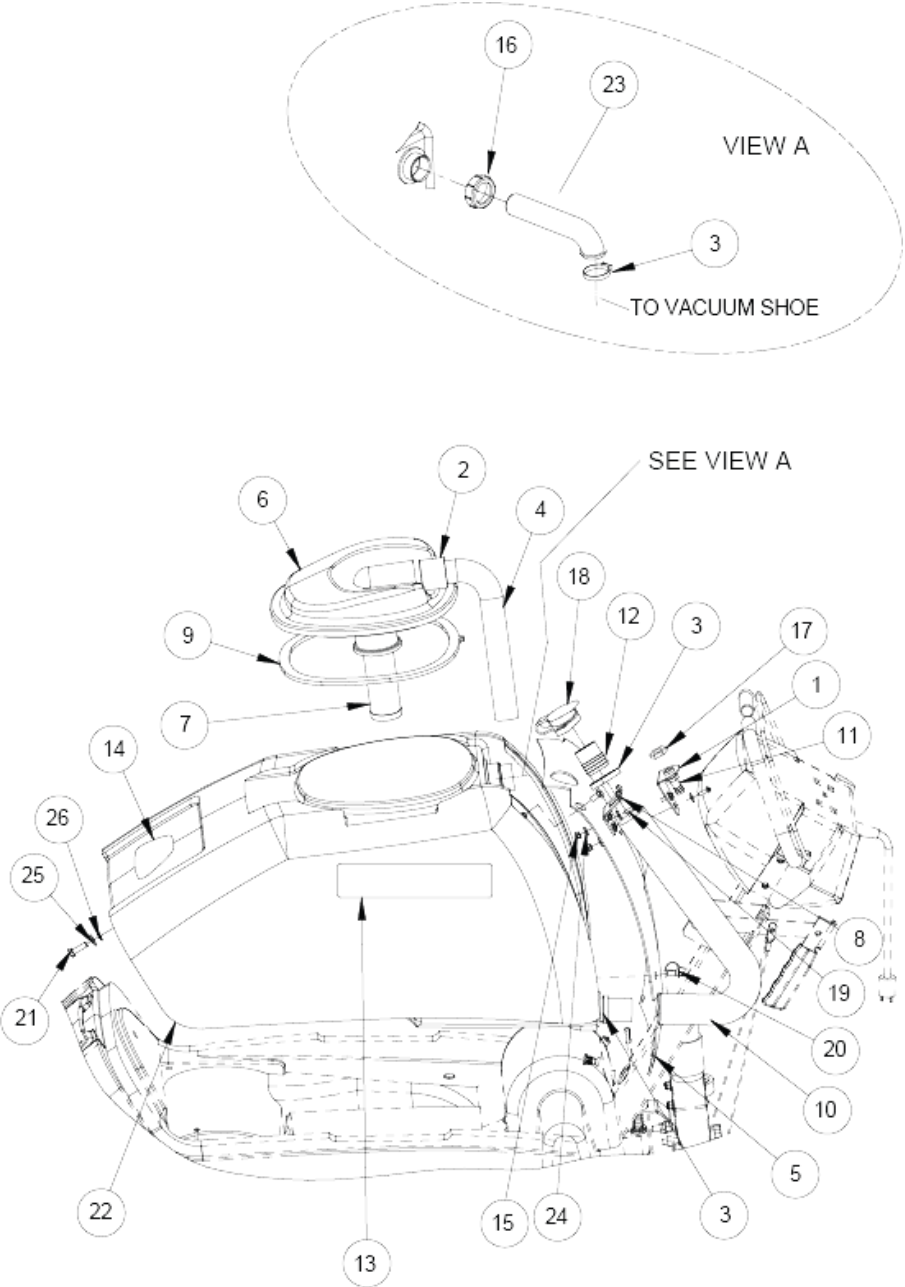
9090 CONTROL PANEL

| POS | Article no. | Description | Quantity | Unit |
|-----|-------------|-----------------------------------|----------|------|
| 1 | 8.623-017.0 | BREAKER, 8A CIRCUIT | 1 | PC |
| 2 | 8.629-146.0 | BREAKER, 11A VDE CIRCUIT | 1 | PC |
| 3 | 8.623-021.0 | BREAKER, 6A VDE CIRCUIT | 1 | PC |
| 4 | 8.600-201.0 | BOOT, 3/8 CIRCUIT BREAKER | 3 | PC |
| 5 | 8.623-431.0 | CORD ASM, 12/3 PIGTAIL X 24" | 1 | PC |
| 6 | 8.600-287.0 | CORD, 1/8" X 12~ | 1 | PC |
| 7 | 8.623-404.0 | CONTROLLER, PROPEL CMD20 | 1 | PC |
| 8 | 8.607-552.0 | COVER, PROPEL BOARD | 1 | PC |
| 9 | 8.624-202.0 | Knob speed control | 1 | PC |
| 10 | 8.639-692.0 | LABEL, CONTROL PANEL P/L | 1 | PC |
| 11 | 8.627-085.0 | Lock nut | 2 | PC |
| 12 | 8.600-567.0 | NUT, 1/2-14 CONDUIT LK STL ZNPLT | 1 | PC |
| 13 | 7.777-999.0 | Stockpiling discontinued | 2 | PC |
| 14 | 8.608-101.0 | PLATE, CONTROL PANEL | 1 | PC |
| 15 | 8.627-451.0 | SCREW, 6-32 X .5 PHPNHSMS BLK | 2 | PC |
| 16 | 8.600-687.0 | SCREW, 10 X .5 PHPNHSMS TYPEB BLK | 4 | PC |
| 17 | 8.600-713.0 | Switch DPDT 2-POSITION ROCKER | 1 | PC |
| 18 | 8.600-714.0 | Switch SPST 2-POSITION ROCKER | 1 | PC |
| 19 | 8.601-075.0 | WASHER 3/8 X .497 X .022 INTLK | 4 | PC |
| 20 | 8.613-338.0 | GASKET,1/8 X 1/2 1SDA FOAM BLK | 2,8 | Feet |
| 22 | 8.639-693.0 | LABEL, CIRCUIT BREAKER | 1 | PC |
| 23 | 8.624-504.0 | Label ground symbol | 1 | PC |



9100 SOLUTION TANK

| POS | Article no. | Description | Quantity | Unit |
|-----|-------------|-----------------------------------|----------|------|
| - | | CORD SET 12/3 SJTW-A X 75' YLW | 1 | PC |
| 1 | 8.623-315.0 | CLAMP, 3/8 HOSE (D-SLOT) | 1 | PC |
| 2 | 8.600-238.0 | Clamp 2.25" WORM GEAR | 2 | PC |
| 3 | 8.600-240.0 | Clamp 2.0" WORM GEAR X .312W | 1 | PC |
| 4 | 8.600-310.0 | CUFF,BLK 1.9ID VAC HOSE X 4.07 | 1 | PC |
| 5 | 8.600-287.0 | CORD, 1/8" X 12~ | 1 | PC |
| 6 | 8.623-771.0 | GASKET DOME 9ID X 30.75L | 1 | PC |
| 7 | 7.777-999.0 | Stockpiling discontinued | 1 | PC |
| 8 | 8.628-099.0 | HOSE, VAC EXHAUST X 24" | 1 | PC |
| 9 | 8.628-179.0 | HOSE, 1/2IDX.09WCLR X 44" | 1 | PC |
| 10 | 8.619-792.0 | HOSEBARB, 1/2MPT X 3/8 NYL DL | 1 | PC |
| 11 | 8.600-153.0 | HOSEBARB, 1/2MPT X 1/2 HOSE 90 | 1 | PC |
| 12 | 8.639-367.0 | LID, SOLUTION TANK CMD20 | 1 | PC |
| 13 | 8.625-843.0 | VAC MOTOR, 120V 5.7 3ST TD TB | 1 | PC |
| 14 | 7.777-999.0 | Stockpiling discontinued | 4 | PC |
| 15 | 8.608-113.0 | PLATE, CMD20 VAC MTR | 1 | PC |
| 16 | 8.603-313.0 | PLATE, VAC MOTOR COOLING | 1 | PC |
| 17 | 8.627-381.0 | SCREW, 1/4-20 X 1 HHCS SS | 4 | PC |
| 18 | 8.627-435.0 | SCREW, 10-24 X .5 PHPNHTC | 1 | PC |
| 19 | 8.627-518.0 | SCREW, 5/16-18 X .5 STL GR5 ZNPLT | 6 | PC |
| 20 | 8.630-985.0 | TANK, SOLUTION BRC 46/76 W | 1 | PC |
| 21 | 8.601-063.0 | WASHER, 1/4 SS | 4 | PC |
| 22 | 8.601-064.0 | Washer #10 LOCK EXT STAR SS | 1 | PC |
| 23 | 8.601-067.0 | WASHER, 5/16 FLT SS | 6 | PC |
| 24 | 8.627-909.0 | WASHER, 5/16 X .61 X .034 INTLK | 6 | PC |



9110 RECOVERY TANK

| POS | Article no. | Description | Quantity | Unit |
|-----|-------------|--|----------|------|
| 1 | 8.607-300.0 | BRKT, SIGHT TUBE | 1 | PC |
| 2 | 8.600-301.0 | Collar HOSE 1.5" BLK A 2161 | 1 | PC |
| 3 | 8.600-240.0 | Clamp 2.0" WORM GEAR X .312W | 2 | PC |
| 4 | 8.624-008.0 | HOSE, 1.5 BLK VAC X 52" | 1 | PC |
| 5 | 8.639-364.0 | COVER, CMD20 REAR | 1 | PC |
| 6 | 8.623-527.0 | DOME ASM, CMD20 | 1 | PC |
| 7 | 8.600-359.0 | FLOAT BALL, VAC SHUT OFF | 1 | PC |
| 8 | 8.600-137.0 | BRKT, HOSE HOOK | 1 | PC |
| 9 | 8.623-767.0 | GASKET, DOME CMD20 | 1 | PC |
| 10 | 8.600-426.0 | Hose 1.5 X 24.0 DRAIN | 1 | PC |
| 11 | 8.619-754.0 | HOSEBARB, 3/8MPT X 1/2 DL | 1 | PC |
| 12 | 8.600-451.0 | Hose INSERT | 1 | PC |
| 13 | | LABEL, CMD20 SIDE | 2 | PC |
| 14 | 8.633-516.0 | LABEL, KARCHER FRONT | 1 | PC |
| 15 | 8.600-564.0 | NUT, 10-32 HEX NYLOCK STL GR2 ZNPLT | 4 | PC |
| 16 | 8.637-208.0 | NUT, 1.5 SLIP JOINT | 1 | PC |
| 17 | 8.624-791.0 | NUT, 3/8 HEX BRS | 1 | PC |
| 18 | 8.640-140.0 | HOSE, CAP, YLW | 1 | PC |
| 19 | 8.627-427.0 | SCREW, 10-32 X .625 PHPNHMS STL ZNPLT | 4 | PC |
| 20 | 8.627-477.0 | SCREW, 5/16-18 X .75 FLHMS BLKOX | 6 | PC |
| 21 | 8.600-675.0 | SCREW, 5/16-18 X 1 HHCS STL GR5 ZNPLT NP | 1 | PC |
| 22 | 8.634-262.0 | TANK, RECOVERY BRC 46/76 MD GRY | 1 | PC |
| 23 | 8.625-786.0 | TUBE, 1.5 WASTE | 1 | PC |
| 24 | 8.601-065.0 | WASHER, .203 X .562 X .040 FLT | 8 | PC |
| 25 | 8.601-067.0 | WASHER, 5/16 FLT SS | 1 | PC |
| 26 | 8.627-909.0 | WASHER, 5/16 X .61 X .034 INTLK | 1 | PC |

9120 WIRING DIAGRAM COMMODORE 20

| POS | Description | Quantity | Unit |
|-----|---------------------|----------|------|
| 1 | WIRING DIAGRAM PAGE | 1 | PC |

Serial Number

| REF. NO. | MODEL: SERIAL # |
|---------------------|------------------------|
| 1 | 10086050001649 |

If you see a ref number with an (*) in either the "Serial number from" column or "Serial number to" column in a parts list, it is referring to the serial numbers with the corresponding ref number in this serial number list.

The serial number indicates the first machine the part number is applicable to. The main illustration shows the most current design of the machine. When a boxed illustration is shown, it displays the older design.

| POS | Description | Quantity | Unit |
|-----|--------------------|----------|------|
| 1 | SERIAL NUMBER PAGE | 1 | PC |
